

Refer to  
this map as:

30 L/14g  
EDITION 2 MCE  
SERIES A 851

CONVERSION SCALE FOR ELEVATIONS

0 100 200 300 400 500 600 700 800 900 1000

Feet

0 30 60 90 120 150 180 210 240 270 300

Metres

T.N.

9° 20' 1" 14'

166 Miles

22 Miles

Use diagram only to obtain numerical values.  
APPROXIMATE MEAN DECLINATION 1972  
FOR CENTRE OF MAP  
Annual change increasing 1.5'

ONE THOUSAND METRE  
UNIVERSAL TRANSVERSE MERCATOR GRID  
ZONE 17

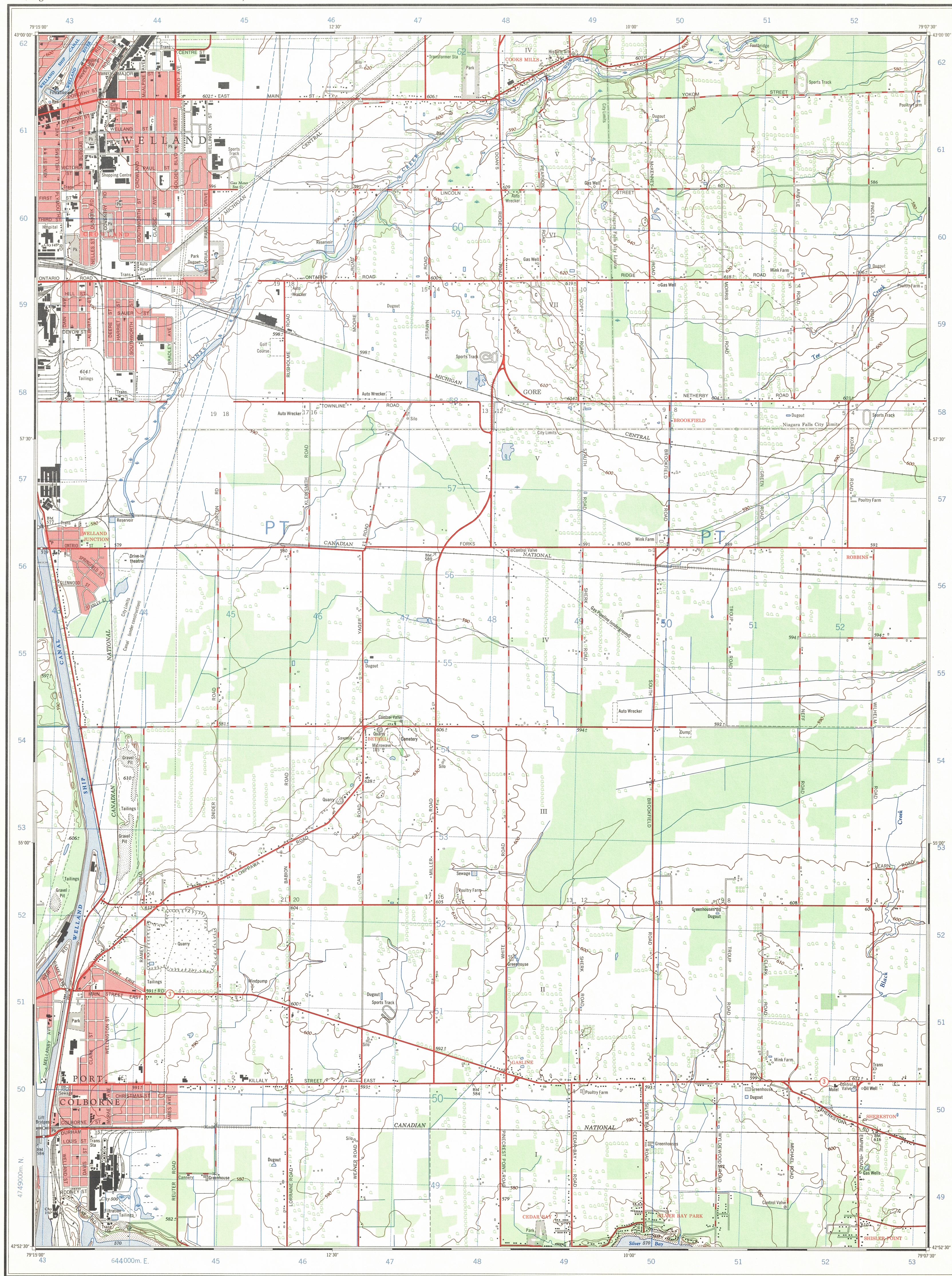
GRID ZONE DESIGNATION	100,000 M. SQUARE IDENTIFICATION
17T	P T

EXAMPLE OF METHOD USED  
TO GIVE A REFERENCE TO NEAREST 100 METRES  
THE FOLLOWING GRID REFERENCE IS SHOWN ONLY  
AND DOES NOT REFER TO A POINT ON THIS MAP

99  
98  
97

95 96 97 98

REFERENCE POINT	CHURCH (as above)
EASTING: Road number on grid line immediately to left of point	97
Estimate tenths of a square from this line eastward to point	5
NORTHING: Road number on grid line immediately below point	98
Estimate tenths of a square from this line northward to point	4
EXAMPLE MILITARY GRID REFERENCE	975984
Nearest similar grid reference	100,000 metres (about 63 miles)



Produced by the SURVEYS and MAPPING BRANCH,  
DEPARTMENT OF ENERGY, MINES AND RESOURCES.  
Information depicted correct as at 1970. Printed 1973.

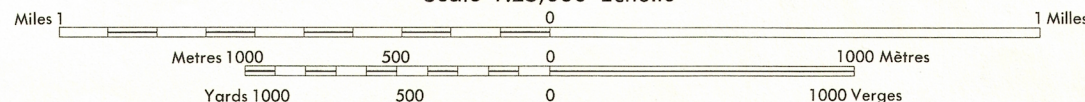
Copies may be obtained from the Canada Map Office,  
Department of Energy, Mines and Resources, Ottawa,  
or your nearest map dealer.

© Canada Copyrights Reserved 1973

## WELLAND JUNCTION

NIAGARA REGIONAL MUNICIPALITY  
ONTARIO

Scale 1:25,000 Échelle



CONTOUR INTERVAL 10 FEET  
Elevations in Feet above Mean Sea Level

North American Datum 1927  
Système de référence géodésique nord américain, 1927  
Projection Transverse de Mercator

Communities within cities and towns are named in red. Les communautés à l'intérieur des cités et villes sont désignées en rouge.

Building	Bâtiment	Church	Église
School	École	Post Office	Bureau de poste
Cemetery	Cimetière	Navigation Light	Feu de navigation
Rock, bare or awash	Roche, nue ou à fleur d'eau		
Power transmission line	Ligne de transport d'énergie		
River with bridge	Rivière avec pont		
Rapids, Falls, large rapids	Rapides, Chutes, grands, petits		
Lake intermittent, indefinite	Lac intermittent, rive imprécise		
Marsh or Swamp	Marais ou marécage		
Depression contours	Courbes de cuvette		
Trees	Arbres		
Woods	Bois		
Vineyard, Orchard	Vignoble, Verger		

Établi par la DIRECTION DES LEVÉS ET DE LA CARTOGRAPHIE,  
MINISTÈRE DE L'ÉNERGIE, DES MINES ET DES RESSOURCES.  
Remise à jour en 1970. Imprimé en 1973.

Ces cartes sont en vente au Bureau des Cartes du Canada,  
ministère de l'Énergie, des Mines et des Ressources, Ottawa,  
ou chez le vendeur le plus près.

© Canada 1973; tous droits réservés

30 M/3c	30 M/3b	30 M/3a
30 L/14f	30 L/14g	30 L/14h
30 L/14c	30 L/14d	30 L/14e

INDEX TO ADDING MAPS OF  
THE NATIONAL TOPOGRAPHIC SYSTEM

WELLAND JUNCTION

30 L/14g  
EDITION 2