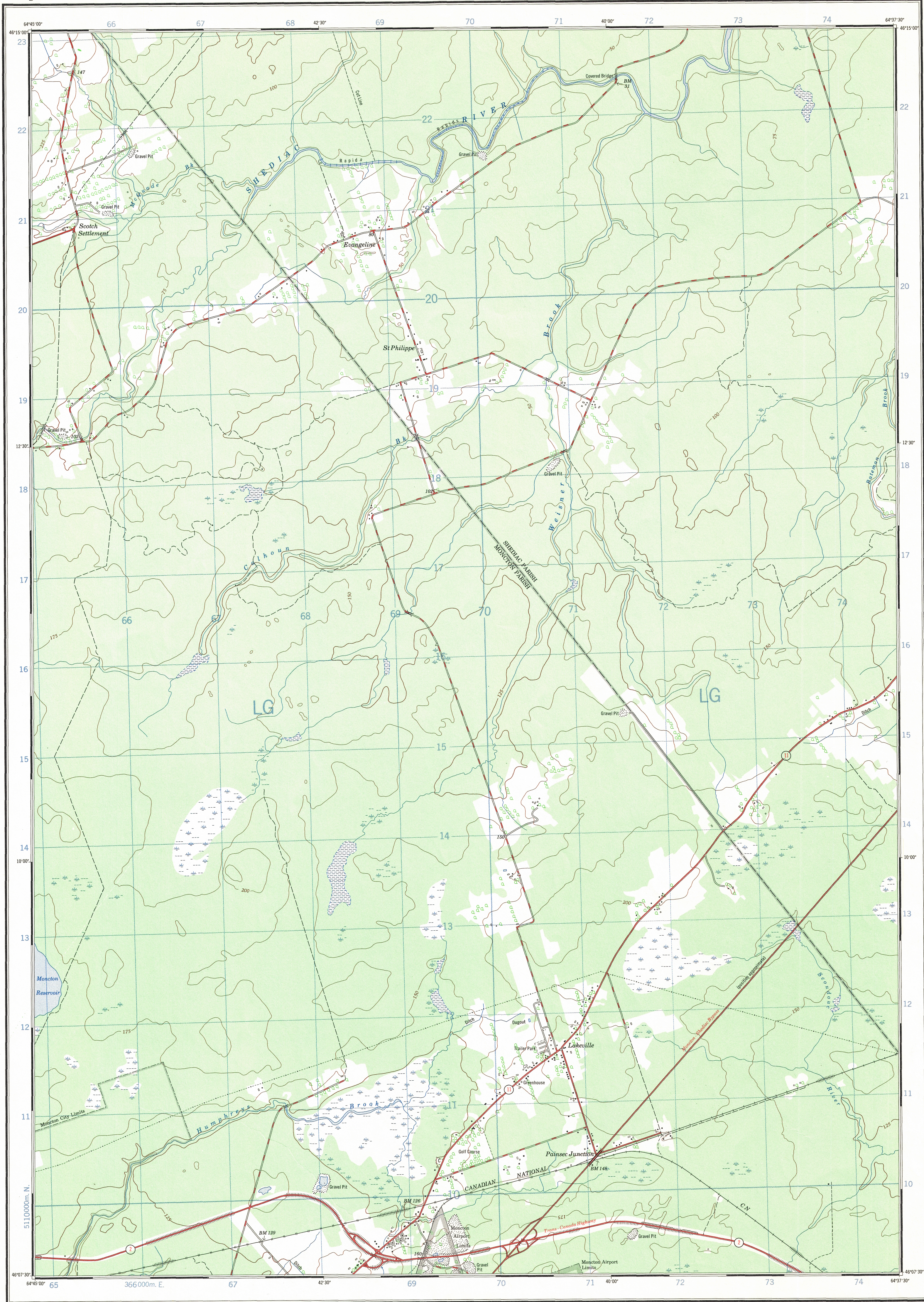


Refer to this map as:  
21-1/2g  
EDITION 1  
SERIES A 891



CONVERSION SCALE FOR ELEVATIONS

Feet  
0 100 200 300 400 500 600 700 800 900 1000

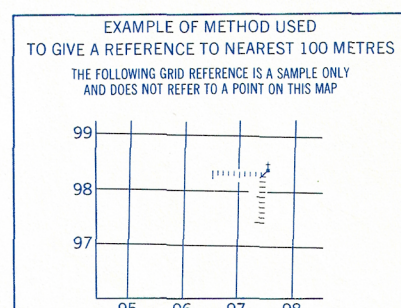
Meters  
0 100 200 300 400 500 600 700 800 900 1000

T.N.  
22° 21' 13" N  
97° 13' 22" W  
Magnetic North

Use diagram only to obtain numerical values.  
APPROXIMATE MEAN DECLINATION 1968  
FOR CENTRE OF MAP  
Annual change decreasing 1.3"

ONE THOUSAND METRE  
UNIVERSAL TRANSVERSE MERCATOR GRID  
ZONE 20

GRID ZONE DESIGNATION	100,000 M. SQUARE IDENTIFICATION
20 T	LG



REFERENCE POINT	CHURCH (as above)
EASTING: Read number on grid line immediately to left of point Estimate tenths of a square from this line eastward to point	97 5 975
NORTHING: Read number on grid line immediately below point Estimate tenths of a square from this line northward to point	98 4 984

EXAMPLE MILITARY GRID REFERENCE 975984  
Nearest similar grid reference 100,000 metres (about 53 miles)

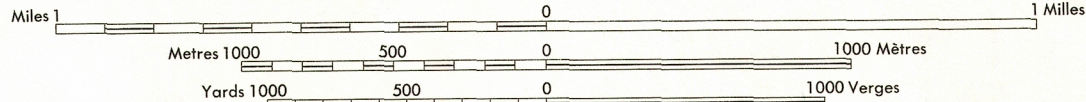
Produced by the SURVEYS AND MAPPING BRANCH,  
DEPARTMENT OF ENERGY, MINES AND RESOURCES.  
Information depicted current as of 1966. Printed 1970.

Copies may be obtained from the Map Distribution Office,  
Department of Energy, Mines and Resources, Ottawa.

## PAINSEC JUNCTION

WESTMORLAND COUNTY  
NEW BRUNSWICK

Scale 1:25,000 Échelle



CONTOUR INTERVAL 25 FEET  
Elevations in Feet above Mean Sea Level  
North American Datum 1927  
Transverse Mercator Projection

ÉQUIDISTANCE DES COURBES 25 PIEDS  
Élevations en pieds au-dessus du niveau moyen de la mer  
Niveau de référence nord-américain 1927  
Projection transversale de Mercator

Roads:	Routes:	
hard surface, all weather.....	pavée, toute saison.....	dual highway more than 2 lanes 2 chaussées séparées plus de 2 voies
hard surface, all weather.....	pavée, toute saison.....	2 lanes less than 2 lanes 2 voies moins de 2 voies
loose or stabilized surface, all weather.....	gravier aggloméré, toute saison.....	2 lanes or more less than 2 lanes 2 voies ou plus moins de 2 voies
loose surface, dry weather.....	de gravier, période sèche.....	
cart track.....	de terre.....	
trail or portage.....	sentier ou portage.....	
Railway, normal gauge, single track.....	Chemin de fer, voie unique (écartement normal), single track.....	
Horizontal control point, with elevation.....	Point géodésique, avec cote.....	454
Bench mark, with elevation.....	Repère de nivellement, avec cote.....	BM 157
Spot elevation: precise.....	Point coté: précis.....	450
Mine or open cut.....	Mine ou fosse à ciel ouvert.....	9

Building.....	Bâtiment.....	Church.....	Eglise.....
School.....	École.....	Post Office.....	Bureau de poste.....
Cemetery.....	Cimetière.....	Navigation Light.....	Feu de navigation.....
Rock, bare or awash.....	Roche, nue ou à fleur d'eau.....		
Power transmission line.....	Ligne de transport d'énergie.....		
River with bridge.....	Rivière avec pont.....		
Rapids, Falls, large, small.....	Rapides, Chutes, grands, petits.....		
Lake intermittent, indefinite.....	Lac intermittent, rive imprécise.....		
Marsh or Swamp.....	Marais ou marécage.....		
Depression contours.....	Courbes de cuvette.....		
Trees.....	Arbres.....		
Woods.....	Bois.....		
Vineyard, Orchard.....	Vignoble, Verger.....		

TABLEAU D'ASSEMBLAGE DU SYSTÈME NATIONAL DE RÉFÉRENCE CARTOGRAPHIQUE

64°52'30"	64°50'00"	64°47'30"
21-1/7c	21-1/7b	21-1/7a
21-1/2f	21-1/2e	21-1/2d
21-1/2c	21-1/2b	21-1/2a
64°52'30"	64°50'00"	64°47'30"

INDEX TO ADJOINING MAPS OF THE NATIONAL TOPOGRAPHIC SYSTEM

PAINSEC JUNCTION  
21-1/2g  
EDITION 1