

Refer to  
this map as: 11 D/13h  
EDITION 1 MCE  
SERIES A 891

CONVERSION SCALE FOR ELEVATIONS

30 20 10 0  
100 150 200 250 300 350 400 450 500 550 600 650 700 750 800 850 900 950 1000  
Feet Metres

T.N.  
22° 39' 0" 0° 24' 0"  
403 Mils 7 Mils  
Grat North  
Magnetic North

Use diagram only to obtain numerical values.  
APPROXIMATE MEAN DECLINATION 1967  
FOR CENTRE OF MAP  
Annual change decreasing 1.1'

ONE THOUSAND METRE  
UNIVERSAL TRANSVERSE MERCATOR GRID  
ZONE 20

GRID ZONE DESIGNATION	100,000 M. SQUARE IDENTIFICATION
20 T	M E

EXAMPLE OF METHOD USED  
TO GIVE A REFERENCE TO NEAREST 100 METRES  
THE FOLLOWING GRID REFERENCE IS A SAMPLE ONLY  
AND DOES NOT REFER TO A POINT ON THIS MAP

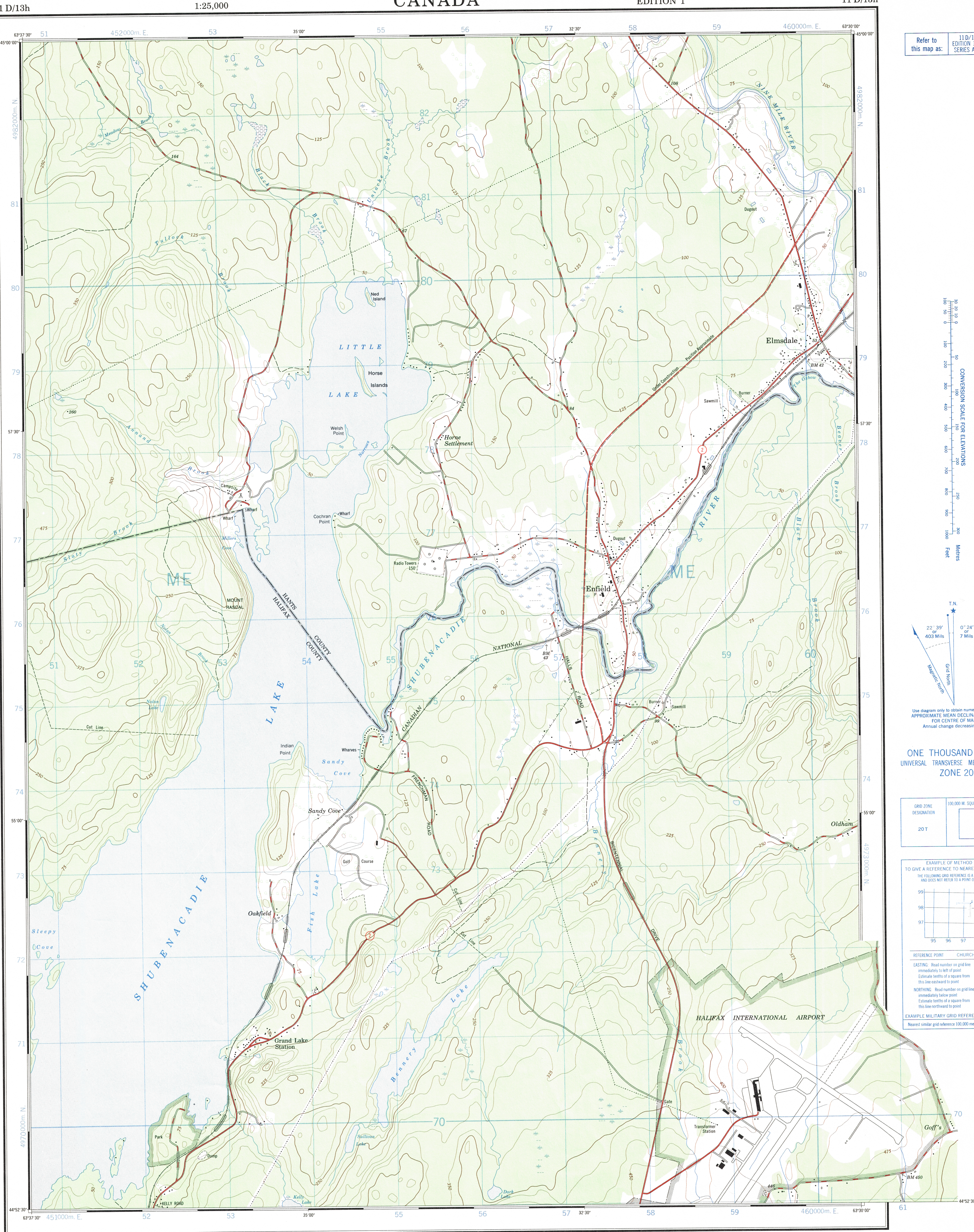
99	98	97	96	95
98	97	96	95	94
97	96	95	94	93
96	95	94	93	92
95	94	93	92	91

REFERENCE POINT CHURCH (as above)

EASTING: Road number on grid line immediately to left of point  
Estimate tenths of a square from this line eastward to point

NORTHING: Road number on grid line immediately below point  
Estimate tenths of a square from this line northward to point

EXAMPLE MILITARY GRID REFERENCE 975984  
Nearest similar grid reference 100,000 metres (about 63 miles)

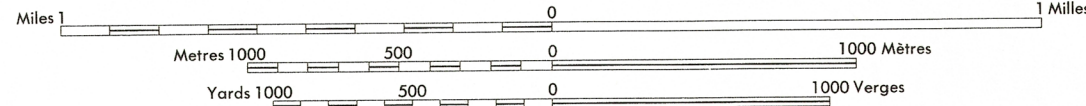


Produced by the SURVEYS AND MAPPING BRANCH,  
DEPARTMENT OF ENERGY, MINES AND RESOURCES.  
Information depicted current as of 1966. Printed 1970

Copies may be obtained from the Map Distribution Office,  
Department of Energy, Mines and Resources, Ottawa.

## ENFIELD NOVA SCOTIA

Scale 1:25,000 Échelle



CONTOUR INTERVAL 25 FEET  
Elevations in Feet above Mean Sea Level  
NORTH AMERICAN DATUM 1927  
Transverse Mercator Projection

Some names on this map are not yet official.  
Corrections or additions are invited by the  
Surveys and Mapping Branch.

ÉQUIDISTANCE DES COURBES 25 PIEDS  
Élévations en pieds au dessus du niveau moyen de la mer  
Niveau de référence nord-américain 1927  
Projection Transverse de Mercator

Certains noms inscrits sur cette carte ne sont  
pas encore officiels. La Direction des levés et  
de la cartographie saurait gré au public de lui  
signaler corrections et additions.

Building.....	Bâtiment.....	Church.....	Église.....
School.....	École.....	Post Office.....	Bureau de poste.....
Cemetery.....	Cimetière.....	Navigation Light.....	Feu de navigation.....
Rock, bare or awash.....	Roche, nue ou à fleur d'eau.....		
Power transmission line.....	Ligne de transport d'énergie.....		
River with bridge.....	Rivière avec pont.....		
Rapids, Falls, large small.....	Rapides, Chutes, grands, petits.....		
Lake intermittent, indefinite.....	Lac intermittent, rive imprécise.....		
Marsh or Swamp.....	Marais ou marécage.....		
Depression contours.....	Courbes de cuvette.....		
Trees.....	Arbres.....		
Woods.....	Bois.....		
Vineyard, Orchard.....	Vignoble, Verger.....		

TABLEAU D'ASSEMBLAGE DU SYSTÈME NATIONAL  
DE RÉFÉRENCE CARTOGRAPHIQUE

45° 07' 30"	63° 45' 00"	63° 22' 30"	45° 07' 30"
11 E/46	11 E/44	11 E/38	
	11 D/13h	11 D/14	
	11 D/13h	11 D/14	11 D/14
44° 45' 00"	63° 45' 00"	63° 22' 30"	44° 45' 00"

INDEX TO ADJOINING MAPS OF  
THE NATIONAL TOPOGRAPHIC SYSTEM

ENFIELD  
11 D/13h  
EDITION 1

This document was produced  
by scanning the original publication.  
Ce document est le produit d'une  
numérisation par balayage  
de la publication originale.