

This document was produced
by scanning the original publication.
Ce document est le produit d'une
numérisation par balayage
de la publication originale.

NATIONAL TOPOGRAPHIC SYSTEM

1:250,000

CANADA

FIRST EDITION 2

SHEET 116-1

Refer to 116-1
THIS MAP AS: SERIES A 502

Military users,
refer to this map as:
Référence de la carte
pour usage militaire:

SERIES A502
MAP 116-1
EDITION 2 MCE EDITION

ROADS-ROUTES:
hard surface - pavée
loose surface - de gravier
cart track - de terre
trail - sentier
Deletions - Suppressions X X X X

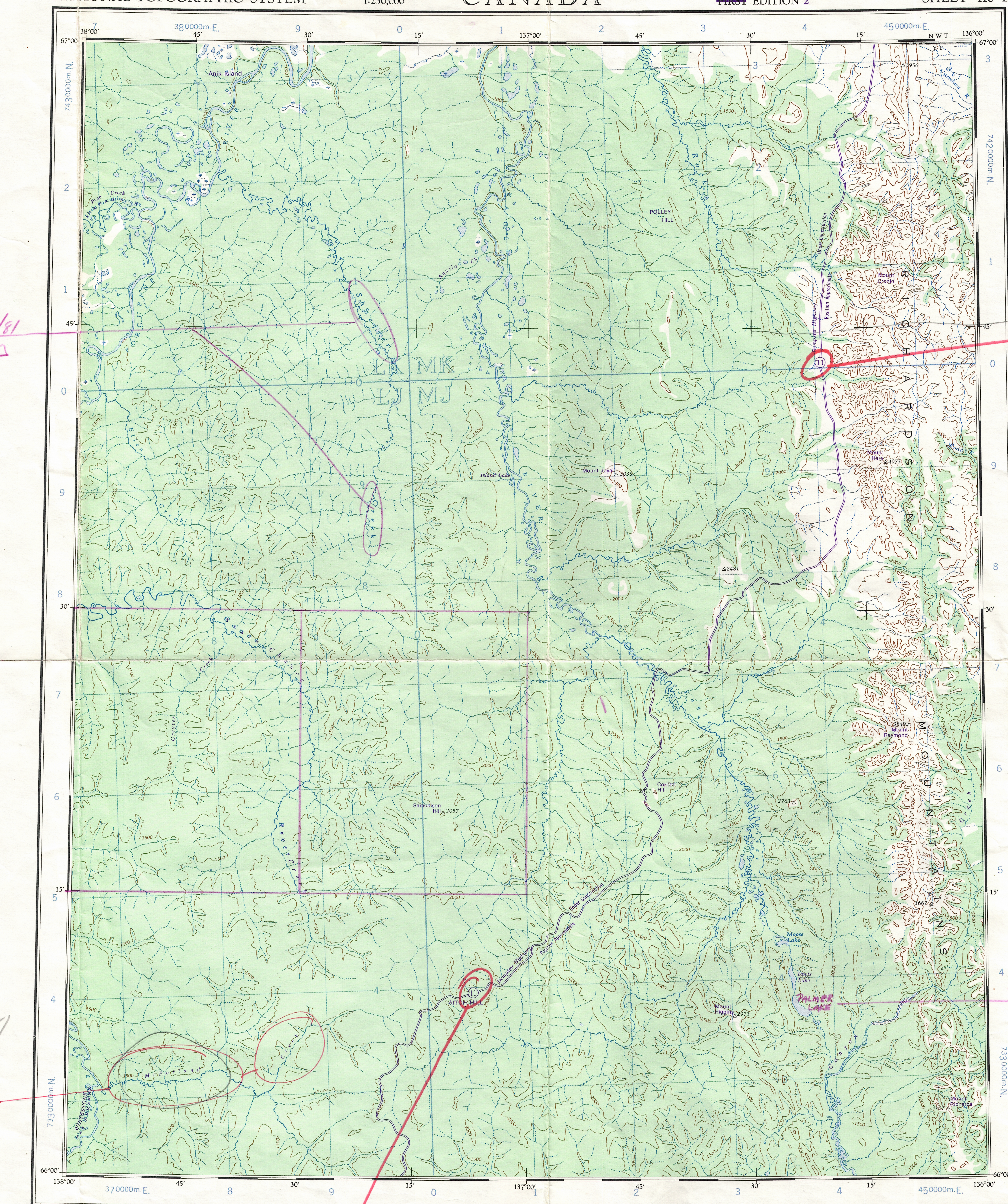
X NAME NOT VERIFIED BY TOPOONYM 30/10/81
12/1/82

AMP 5 HAR

NORM 116 1/2
A milege + destinations
AM HWY TO NO 5

Eagle Plain not to
be shown at this
time in Toponymy 9/11/81

AMP M. Parlon CREEK HAR
08/03/82



| 100,000 M. SQUARE IDENTIFICATION | |
|----------------------------------|----------|
| GRID ZONE DESIGNATION | LKMK 740 |
| SW | LJMJ 40 |

TO GIVE A REFERENCE TO NEAREST 1000 METRES

EXAMPLE: STREAM JUNCTION

SQUARE: Read number of 100,000 m square: MJ

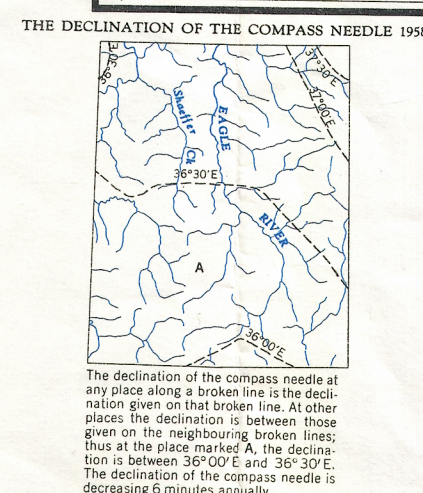
EASTING: Read number on grid line immediately to left of point. Estimate tenths of a square from this line eastward to point.

NORTHING: Read number on grid line immediately below point. Estimate tenths of a square from this line northward to point.

MILITARY GRID REFERENCE (to nearest 1,000 metres): MJ1470

If reporting beyond 15° in any direction prefix Grid Zone Designation as: 8WMJ1470

TEN THOUSAND METRE
UNIVERSAL TRANSVERSE MERCATOR GRID
ZONE 8



Produced and printed by the SURVEYS AND MAPPING
BRANCH, DEPARTMENT OF MINES AND TECHNICAL
SURVEYS, 1959, from air photographs taken in 1950.
Interim Corrections 1974

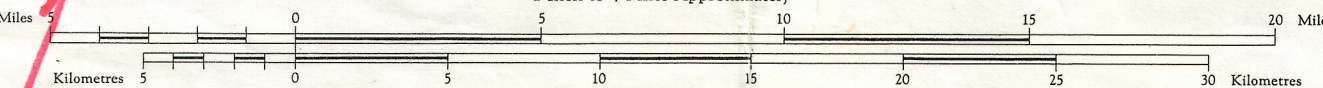
REFERENCE

- Wagon or winter road
- Trail or portage
- Boundary: provincial
- Village or settlement
- Post office
- Building or cabin
- R.C.M.P. post
- Horizontal control point
- Astronomical position
- Spot elevation (in feet)

Transverse Mercator Projection

EAGLE RIVER
YUKON TERRITORY

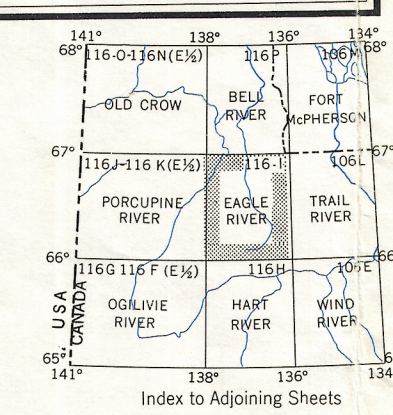
Scale 1:250,000
1 inch to 4 miles approximately



Contour interval 500 Feet
Elevations in Feet above Mean Sea Level
North American Datum 1927

REFERENCE

- Streams:
intermittent or dry
- dry river bed
- Sand, gravel or mud
- Marsh or swamp
- Contours:
elevation
- depression
- approximate
- Forest



EAGLE RIVER
116-1
EDITION 2

REPRINT
SEPT-1974

116-1