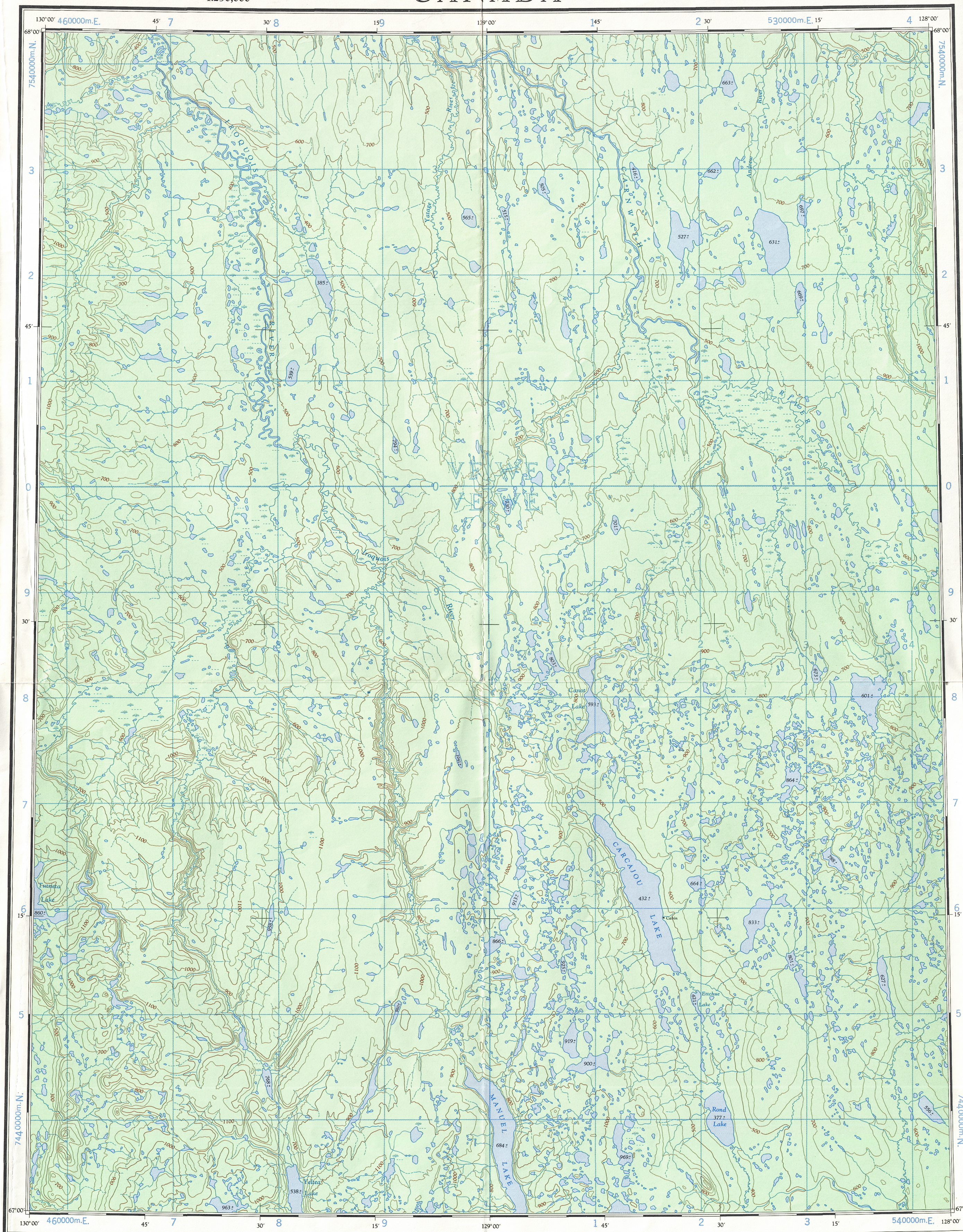


This document was produced
scanning the original publication.

106 P

| | |
|--------------------------|----------------------------------------|
| Refer to this map as: | 106 P EDITION 2 ASE SERIES A 502 |
|--------------------------|----------------------------------------|



100,000 M. SQUARE IDENTIFICATION

GRID ZONE
DESIGNATION

9W

75

50

TO OBTAIN A REFERENCE TO NEAREST 1000 METERS

EXAMPLE: BUILDING

SQUARE: Read letters of 100,000 m. square WE

EASTING: Read number on grid line immediately to left of point.
Estimate tenths of a square from this line eastward to point.

1
6
16

NORTHING: Read number on grid line immediately below point.
Estimate tenths of a square from this line northward to point.

5
9
59

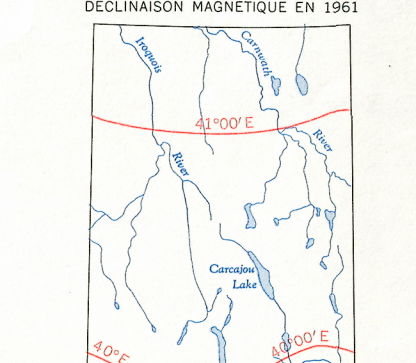
MILITARY GRID REFERENCE (to nearest 1,000 metres) WE1659

If reporting beyond 18° in any direction,
include Grid Zone Designation as QMWF1659

TEN THOUSAND METRE
UNIVERSAL TRANSVERSE MERCATOR GRID
ZONE 9

DMP. SPC.
CARTOGRAPHY DIVISION
DIVISION DE LA CARTOGRAPHIE
DATE 12/11/77
QC. APPROVES RELEASE
CO. APPROVE

THE DECLINATION OF THE COMPASS NEEDLE 1961



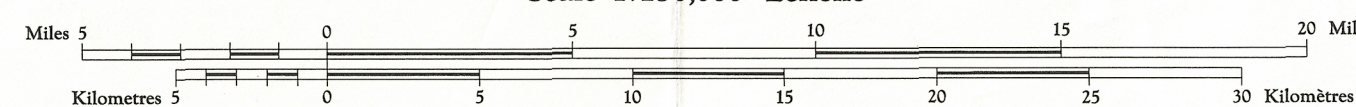
The declination of the compass needle is decreasing
7 minutes annually.
La déclinaison magnétique décroît de 7 minutes annuellement.

Produced by the ARMY SURVEY ESTABLISHMENT
R.C.E. 1957-61. Aerial photography 1955.
Copies may be obtained from the Map Distribution Office
Department of Mines and Technical Surveys, Ottawa.

CANOT LAKE
DISTRICT OF MACKENZIE
NORTHWEST TERRITORIES

Préparée par le SERVICE TOPOGRAPHIQUE DE L'ARMÉE (G.R.C.) 1957-61. Photographie aérienne 1955.

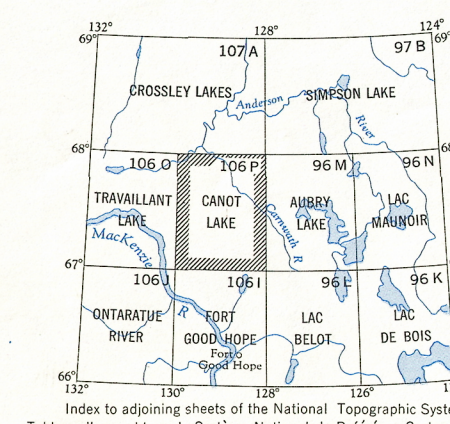
Ces cartes sont en vente au Bureau de distribution des cartes, Ministère des Mines et des Relevés techniques, Ottawa.



Transverse Mercator Projection
North American Datum 1927(1954)
Contour Interval 100 feet
Elevations in feet above Mean Sea Level

Projection transverse de Mercator
Réseau géodésique nord-américain unifié 1927(1954)
Équidistance des courbes: 100 pieds
Élévations en pieds au-dessus du niveau moyen de la mer

| | | |
|--------------------------------|----------------------|------------------------------------------------------|
| Building | Bâtiment | Intermittent stream „Cours d’eau intermittent |
| Post office | Bureau de poste | Intermittent lake Lac intermittent |
| Church | Église | Rapids; falls Rapides; chute |
| School | École | Marsh or swamp Marais ou marécage |
| Astronomical monument | Repère astronomique | String bogs Marais en chaquet |
| R.C.M.P. Detachment | Poste de la G.R.C. | Icefield or Glacier Champs de glace ou glacier |
| Horizontal control point | Point géodésique | Tundra Ponds Sols polygonaux |
| Landing ground | Piste d’atterrissage | Tundra Ponds Étang de toundra |



CANOT LAKE
106 P
EDITION 2

Reprint