

Ce document est le produit d'une numérisation par balayage de la publication originale.

This document was produced by scanning the original publication.

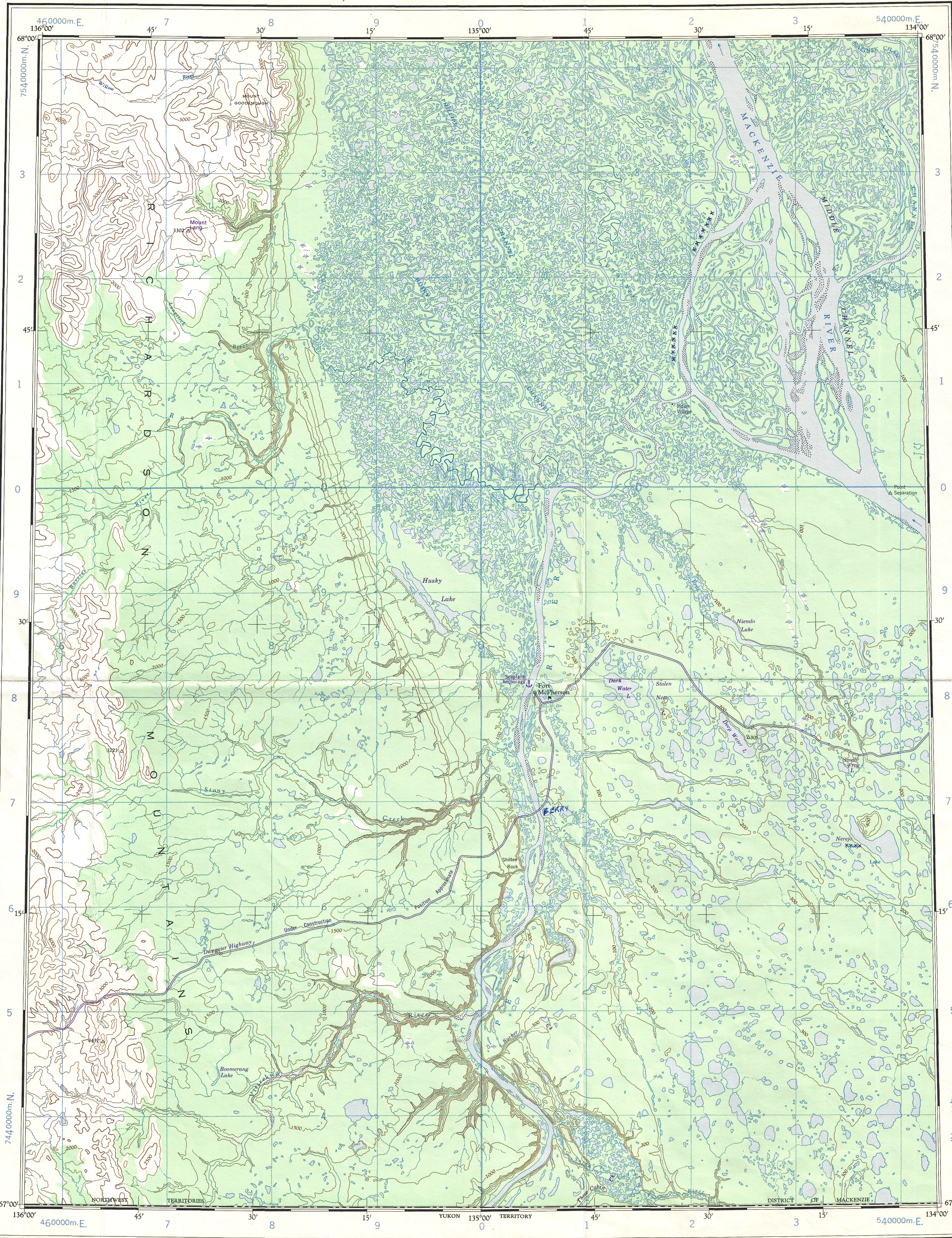
NATIONAL TOPOGRAPHIC SYSTEM

1:250,000

CANADA

FIRST EDITION 2

SHEET 106 M



Refer to
this map as:
EDITION 1 A66
SERIES A 602

Military users,
refer to this map as:
Référence de la carte
pour usage militaire:
SÉRIE A502
MAP 106 M
ÉDITION 2 MCE ÉDITION

ROADS-ROUTES:
hard surface - pavée
loose surface - de gravier
cart track - de terre
trail - sentier
Deletions - Suppressions X X X X

GRID ZONE
DESIGNATION
8W

100,000 M. SQUARE IDENTIFICATION

TO GIVE A REFERENCE TO NEAREST 1000 METRES

EXAMPLE: BUILDING

SQUARE: Read letters of 100,000 m. square

EASTING: Read number on grid line immediately to left of point

NORTHING: Read number on grid line immediately below point

MILITARY GRID REFERENCE

100,000 M. SQUARE IDENTIFICATION

EXAMPLE: BUILDING

SQUARE: Read letters of 100,000 m. square

EASTING: Read number on grid line immediately to left of point

NORTHING: Read number on grid line immediately below point

MILITARY GRID REFERENCE

100,000 M. SQUARE IDENTIFICATION

EXAMPLE: BUILDING

SQUARE: Read letters of 100,000 m. square

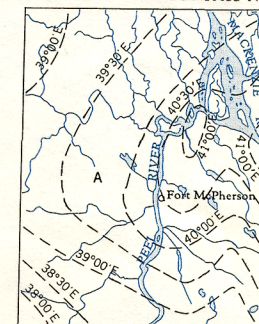
EASTING: Read number on grid line immediately to left of point

NORTHING: Read number on grid line immediately below point

MILITARY GRID REFERENCE

TEN THOUSAND METRE
UNIVERSAL TRANSVERSE MERCATOR GRID
ZONE 8

THE DECLINATION OF THE COMPASS NEEDLE 1959

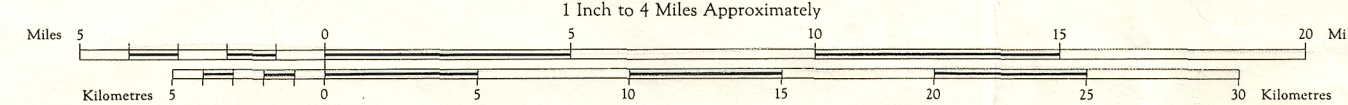


Produced and printed by the SURVEYS AND MAPPING BRANCH,
DEPARTMENT OF MINES AND TECHNICAL SURVEYS, 1959,
from air photographs taken in 1950 and 1954,
Interim Corrections 1974

REFERENCE

Boundary, provincial
Trail or portage
Village or settlement
Post office
Building or cabin
Horizontal control point
Astronomical position
Spot elevation (in feet)
R.C.M.P. post
Foreshore flat

FORT McPHERSON
NORTHWEST TERRITORIES
DISTRICT OF MACKENZIE
Scale 1:250,000
1 Inch to 4 Miles Approximately

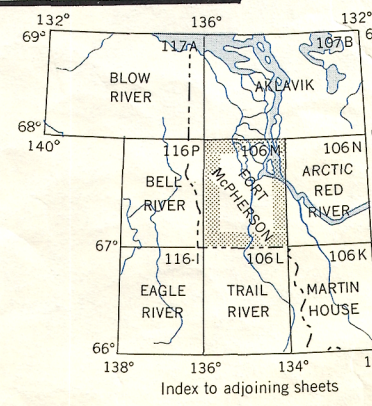


Contour interval 100 Feet below 500 Feet
500 Feet above 500 Feet
Elevations in Feet above Mean Sea Level
North American Datum 1927

Copies may be obtained from the Map Distribution
Office, Department of Mines and Technical Surveys
Ottawa

REFERENCE

Streams:
intermittent or dry
in dry river bed
Rapids, falls
Marsh or swamp
Contours:
elevation
depression
approximate
Sand
Forest



FORT McPHERSON
106 M
EDITION 2