

This document was produced  
by scanning the original publication.

Ce document est le produit d'une  
numérisation par balayage  
de la publication originale.

106 E

1:250 000

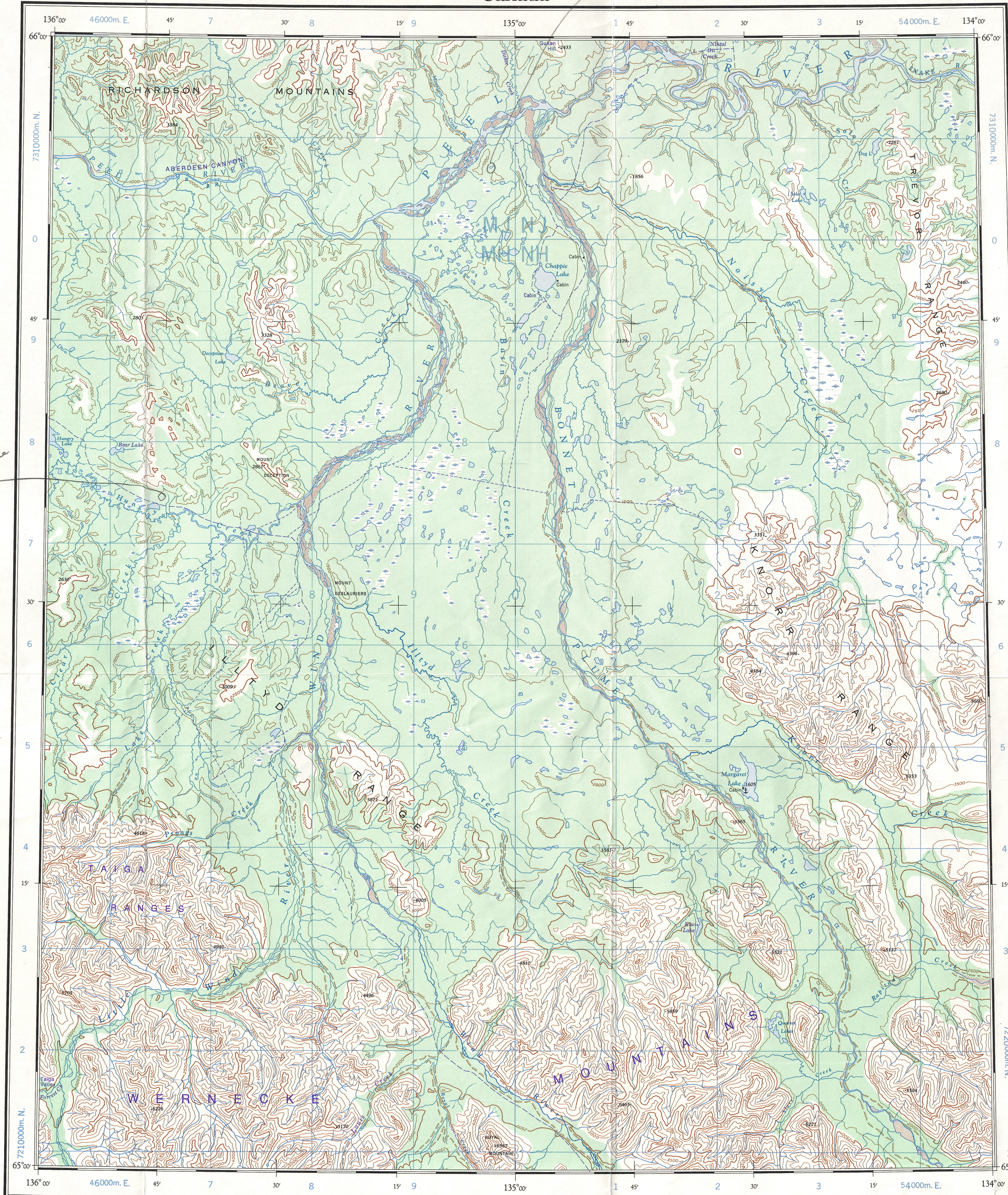
Canada

EDITION 2

106 E

Military users,  
refer to this map as:  
Référence de la carte  
pour usage militaire:

SERIES A 502  
MAP 106 E  
EDITION 2 MCE  
SÉRIE  
CARTE  
ÉDITION



X Cf Blue

ROADS-ROUTES:  
hard surface - pavée .....  
loose surface - de gravier .....  
cart track - de terre .....  
trail - sentier .....

GRID ZONE DESIGNATION	100 000 M. SQUARE IDENTIFICATION									
8 W	<table><tr><td>M</td><td>J</td><td>N</td></tr><tr><td>M</td><td>H</td><td>N</td></tr><tr><td>50</td><td></td><td>750</td></tr></table>	M	J	N	M	H	N	50		750
M	J	N								
M	H	N								
50		750								
TO GIVE A REFERENCE TO NEAREST 1 000 METRES										
EXAMPLE: CABIN										
SQUARE: Read letters of 100 000 m. square: NH										
EASTING: Read number on grid line immediately to left of point. Estimate tenths of a square from this line eastward to point.										
NORTHING: Read number on grid line immediately below point. Estimate tenths of a square from this line northward to point.										
MILITARY GRID REFERENCE (to nearest 1 000 metres) NH 2246										
If reporting beyond 18° in any direction, prefix Grid Zone Designation as: 8WNH2246										

TEN THOUSAND METRE  
UNIVERSAL TRANSVERSE MERCATOR  
ZONE 8

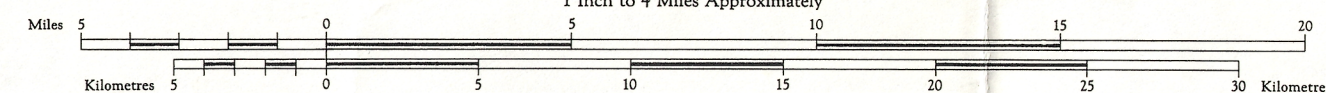
Produced by the Surveys and Mapping Branch,  
Department of Mines and Technical Surveys, 1954,  
from air photographs taken in 1949.

Interim corrections 1981  
This map was checked in 1980 and found to be up-to-date  
in all major features.  
Magnetic declination 1981 varies from 3°41' easterly at  
centre of west edge to 3°45' easterly at centre of east  
edge. Mean annual change decreasing 6.5°.

## WIND RIVER YUKON TERRITORY

Scale 1:250 000

1 Inch to 4 Miles Approximately



Copies may be obtained from the Canada Map Office,  
Department of Energy, Mines and Resources, Ottawa,  
or your nearest map dealer.  
© 1981. Her Majesty the Queen in Right of Canada.  
Department of Energy, Mines and Resources.

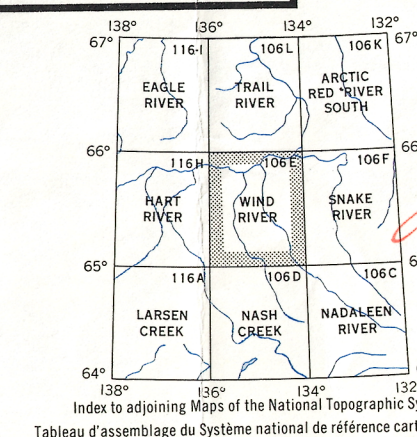
Ces cartes sont en vente au Bureau des Cartes du Canada,  
ministère de l'Énergie, des Mines et des Ressources, Ottawa,  
ou chez le vendeur le plus près.  
© 1981. Sa Majesté La Reine du Chef du Canada.  
Ministère de l'Énergie, des Mines et des Ressources.

Corrections provisoires 1981  
On a vérifié cette carte en 1980, nous avons constaté que toutes  
ses caractéristiques principales étaient à jour.  
En 1981, la déclinaison magnétique au milieu du bord  
ouest de la carte est de 3°41' Est et de 3°45' Est au  
milieu du bord est. La déclinaison annuelle moyenne  
diminue de 6.5°.

Transverse Mercator Projection.  
All Elevations in Feet above Mean Sea Level  
Contour Interval 500 Feet  
North American Datum 1927.

### REFERENCE

Contours, Elevation .....  
Contours, Depression .....  
River Bed Extremity .....  
Stream, Intermittent or Dry .....  
Stream in Dry River Bed .....  
Rapids and Falls .....  
Marsh or Swamp .....  
Wooded Areas .....



TOPOGRAPHICAL SURVEY DIRECTORATE  
SERVICE TOPOGRAPHIQUE

DATE: 6-02-86  
Q. C. APPROVES RELEASE  
C. Q. APPROUVE

WIND RIVER  
106 E  
EDITION 2

Energy, Mines and Resources Canada  
Énergie, Mines et Ressources Canada  
REPRINT

106-E