

This document was produced
by scanning the original publication.

Ce document est le produit d'une
numérisation par balayage
de la publication originale.

106 E

1:250,000

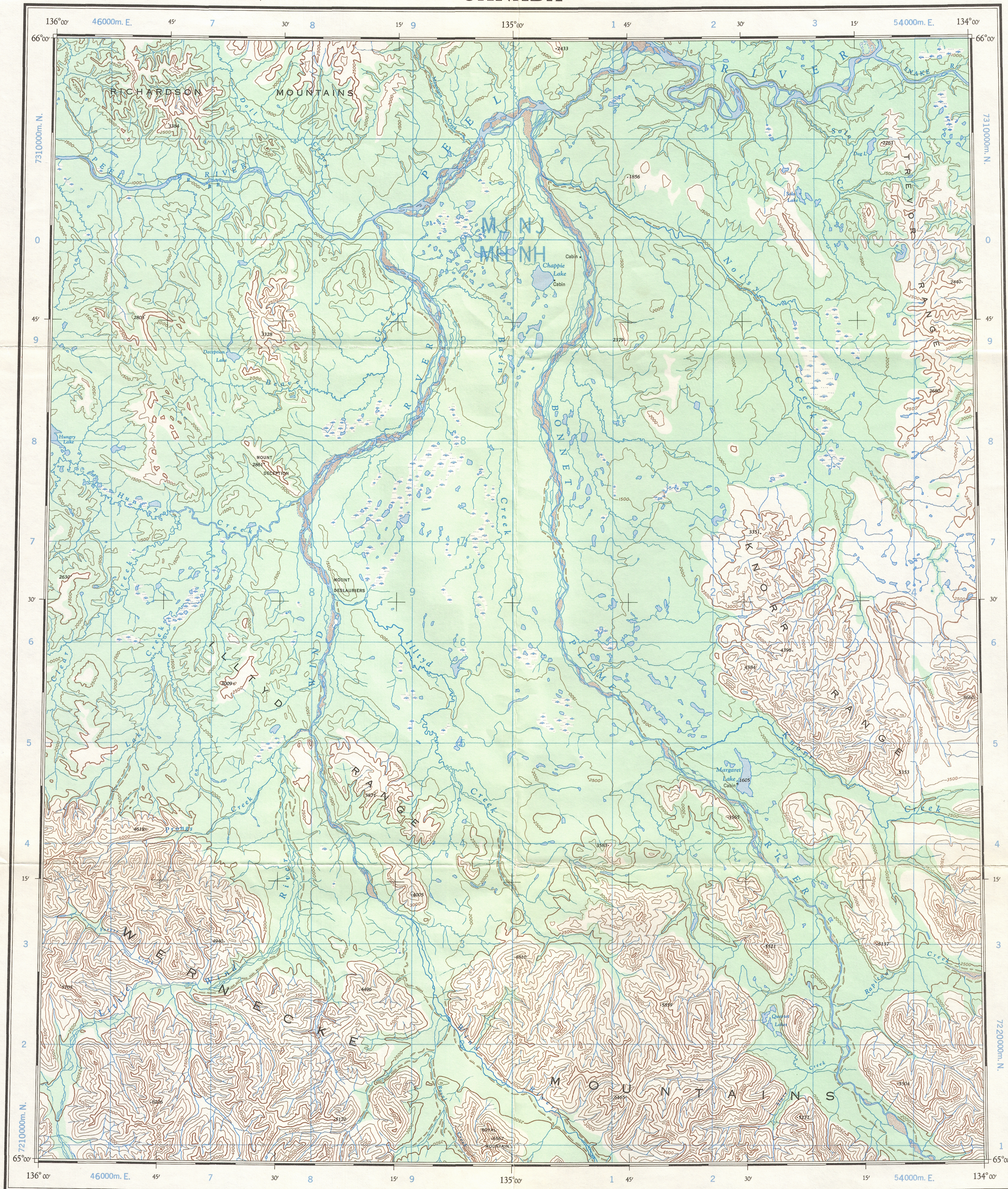
CANADA

EDITION 1

106 E

Military users,
refer to this map as:
Référence de la carte
pour usage militaire.

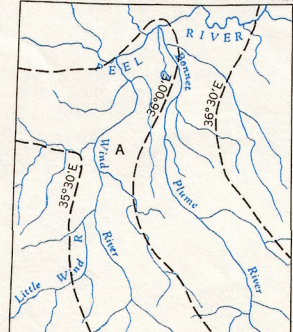
SERIES	A 502	SÉRIE
MAP	106 E	CARTE
EDITION	1 MCE	ÉDITION



100,000 M. SQUARE IDENTIFICATION										
GRID ZONE DESIGNATION	<table><tr><td>M</td><td>J</td><td>N</td></tr><tr><td>M</td><td>H</td><td>N</td></tr><tr><td>8</td><td>W</td><td>20</td></tr></table>	M	J	N	M	H	N	8	W	20
M	J	N								
M	H	N								
8	W	20								
TO GIVE A REFERENCE TO NEAREST 1000 METRES										
EXAMPLE: CABIN										
SQUARE: Read letters of 100,000 m. square	NH									
EASTING: Read number on grid line immediately to left of point	2									
Estimate tenths of a square from this line eastward to point.	2									
NORTHING: Read number on grid line immediately below point	4									
Estimate tenths of a square from this line northward to point.	6									
MILITARY GRID REFERENCE	No nearest 1,000 metres NH2246									
If reporting beyond 10° in any direction, prefix Grid Zone Designation as: 8WNH2246										

TEN THOUSAND METRE
UNIVERSAL TRANSVERSE MERCATOR GRID
ZONE 8

THE DECLINATION OF THE COMPASS NEEDLE 1954

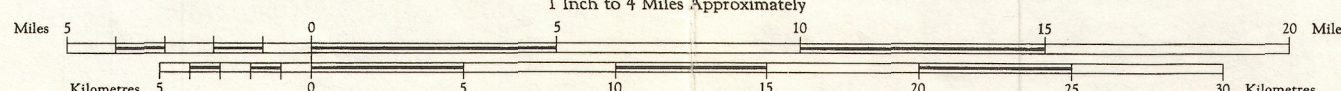


The declination of the compass needle at any place along a broken line is the declination given on that broken line. At other places the declination is between the values given on the neighbouring broken lines; thus at the place marked A the declination is between 20° 20' E. and 20° 40' E. The declination of the compass needle is decreasing 4 1/2 minutes annually.

Produced by the Surveys and Mapping Branch,
Department of Mines and Technical Surveys, 1954,
from air photographs taken in 1945.
Printed by the Army Survey Establishment, R.C.E.,
Department of National Defence, 1954.

REFERENCE

- Wagon or Winter Road
- Trail or Portage
- Village or Settlement
- Post Office
- Building or Cabin
- Historical Control Point
- Astronomical Position
- Spot Elevation, in feet



Copies may be obtained from the Canada Map Office,
Department of Energy, Mines and Resources, Ottawa,
or your nearest map dealer.

© Canada Copyrights Reserved 1974

WIND RIVER
YUKON TERRITORY

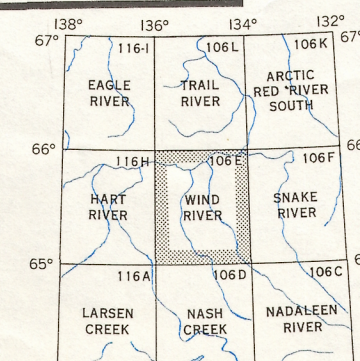
Scale 1:250,000

1 Inch to 4 Miles Approximately

Transverse Mercator Projection.
All Elevations in Feet above Mean Sea Level
Contour Interval 500 Feet
North American Datum 1927.

REFERENCE

- Contours, Elevation
- Contours, Depression
- River Bed, Extremity
- Stream, Intermittent or Dry
- Stream in Dry River Bed
- Rapids and Falls
- Marsh or Swamp
- Wooded Areas



Index to adjoining Maps of the National Topographic System
Tableau d'assemblage du Système national de référence cartographique

WIND RIVER
106 E
EDITION 1