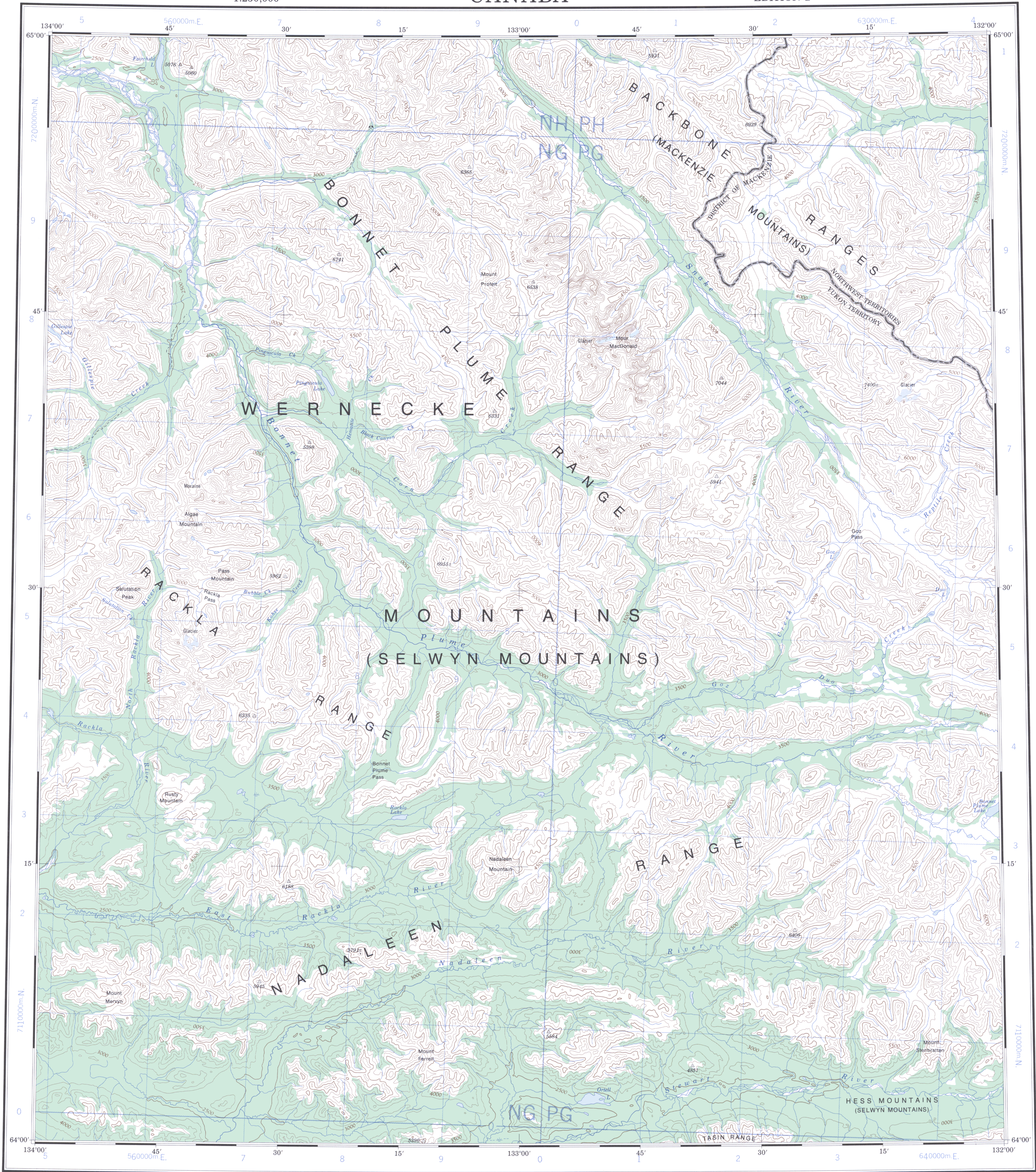


Refer to
this map as:

106 C
EDITION 2 MCE
SERIES A 502



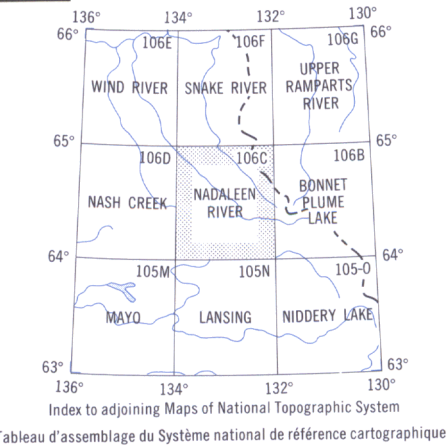
TEN THOUSAND METRE
UNIVERSAL TRANSVERSE MERCATOR GRID
ZONE 8

GRID ZONE DESIGNATION	100,000 M. SQUARE IDENTIFICATION
8W	72 NH PH NG PG
	71 NG PG NT PF

EXAMPLE OF METHOD USED
TO GIVE A REFERENCE TO NEAREST 1 000 METRES
THE FOLLOWING GRID REFERENCE IS A SAMPLE ONLY
AND DOES NOT REFER TO A POINT ON THIS MAP

1				
0	NU			
9	NT			
	3	4	5	6

REFERENCE POINT	ROCKS (as above)
SQUARE: Read letters of 100,000 m. square	NU
EASTING: Read number on grid line immediately to left of point	5
Estimate tenths of a square from this line eastward to point.	4
NORTHING: Read number on grid line immediately below point	0
Estimate tenths of a square from this line northward to point.	4
EXAMPLE MILITARY GRID REFERENCE	NUS404
If reporting beyond 18° in any direction, prefix Grid Zone Designation as	15NVN5404



RELIABILITY DIAGRAM - CROQUIS D'EXACTITUDE

Produced, 1971, by the SURVEYS AND MAPPING BRANCH,
DEPARTMENT OF ENERGY, MINES AND RESOURCES.
Printed 1973.

Magnetic declination 1972 varies from 34°58' easterly at
centre of west edge to 35°32' easterly at centre of east
edge. Mean annual change 5.0' westerly.

Roads:
cart track.....
trail or portage.....

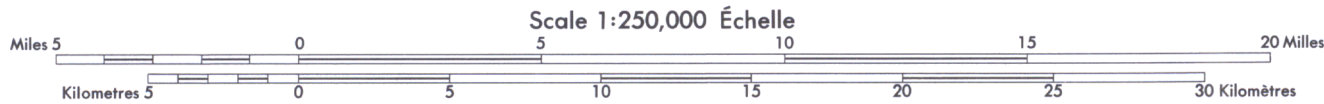
FOR COMPLETE REFERENCE SEE REVERSE SIDE

Large scale mapping photogrammetric, 1968.

Cartographie à grande échelle, photogrammétrie, 1968.

NADALEEN RIVER

YUKON TERRITORY - NORTHWEST TERRITORIES



CONTOUR INTERVAL 500 FEET
Elevations in feet above Mean Sea Level
North American Datum 1927
Transverse Mercator Projection

ÉQUIDISTANCE DES COURBES 500 PIEDS
Élévations en pieds au-dessus du niveau moyen de la mer
Système de référence géodésique nord-américain, 1927
Projection transverse de Mercator

Copies may be obtained from the Canada Map Office,
Department of Energy, Mines and Resources, Ottawa,
or your nearest map dealer.

© Canada Copyrights Reserved 1973

Ces cartes sont en vente au Bureau des Cartes du Canada,
ministère de l'Énergie, des Mines et des Ressources, Ottawa,
ou chez le vendeur le plus près.

© Canada 1973, tous droits réservés

Établie en 1971, par la DIRECTION DES LEVÉS ET DE LA CARTOGRAPHIE,
MINISTÈRE DE L'ÉNERGIE, DES MINES ET DES RESSOURCES. Im-
primée en 1973.

La déclinaison magnétique pour 1972 varie de 34°58' Est
au centre de la limite Ouest à 35°32' Est au centre de la
limite Est. Variation moyenne annuelle 5.0' Ouest.

Routes:
de terre.....
sentier ou portage.....

POUR UNE LISTE COMPLÈTE DES SIGNES, VOIR AU VERSO