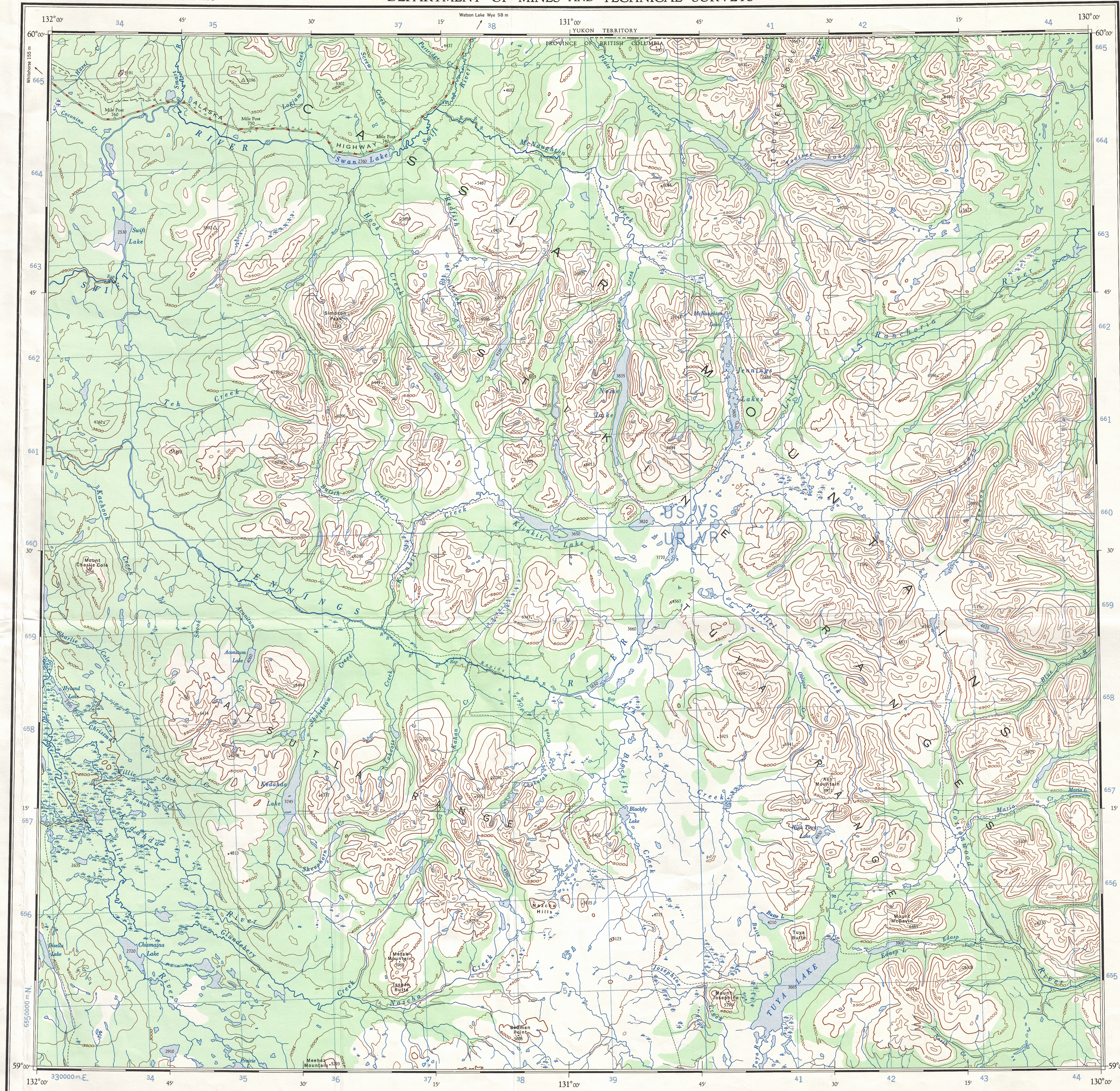
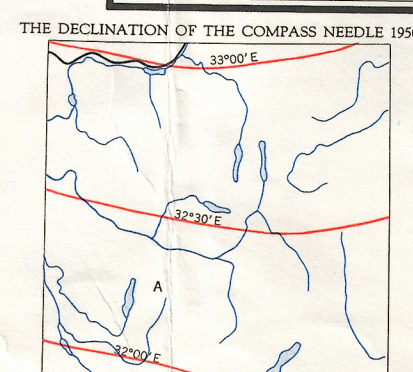


This document was produced  
by scanning the original publication.  
Ce document est le produit d'une  
numérisation par balayage  
de la publication originale.



TEN THOUSAND METRE  
UNIVERSAL TRANSVERSE MERCATOR GRID  
ZONE 9

GRID ZONE DESIGNATION		TO ONE A STANDARD REFERENCE ON THIS SHEET TO NEAREST 1000 METRES	
100,000 M. SQUARE IDENTIFICATION		SAMPLE POINT: ASH MOUNTAIN	
US	VS	VR	
UR	VR		
40		14	71
IGNORE THE SMALLER FIGURES of any grid number; those are for finding the full coordinate. Use ONLY the LARGER figures of the grid number: example: 410000		SAMPLE REFERENCE: If reporting beyond 10° in any direction, prefix Grid Zone Designation as: 9VVR1471	



Surveys in 1947 and compilation in 1951 by the Topographical Survey from  
air photographs taken in 1948. Lithographed and printed by the Army Survey  
Establishment, R.C.E., Department of National Defence, 1952.

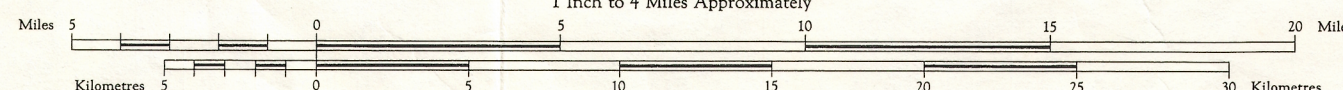
REFERENCE		More than 2 Lines		Less than 2 Lines		Dry Weather	
Road, Hard Surface, All Weather	—	2 Lines or More	—	2 Lines or More	—	2 Lines or More	—
Road, Loose Surface, All Weather	—	2 Lines or More	—	2 Lines or More	—	2 Lines or More	—
Wagon Road, Cart Track etc.	—	2 Lines or More	—	2 Lines or More	—	2 Lines or More	—
Boundary, Provincial	—	2 Lines or More	—	2 Lines or More	—	2 Lines or More	—
Boundary, County or District	—	2 Lines or More	—	2 Lines or More	—	2 Lines or More	—
Boundary, Indian Reserve, Park etc.	—	2 Lines or More	—	2 Lines or More	—	2 Lines or More	—
Survey Mon.	—	2 Lines or More	—	2 Lines or More	—	2 Lines or More	—
Bench Mark	—	2 Lines or More	—	2 Lines or More	—	2 Lines or More	—
Triangulation Sta.	—	2 Lines or More	—	2 Lines or More	—	2 Lines or More	—
Spot Elevation (in feet)	—	2 Lines or More	—	2 Lines or More	—	2 Lines or More	—
Spot Elevation (in metres)	—	2 Lines or More	—	2 Lines or More	—	2 Lines or More	—
Main Electric Power Line	—	2 Lines or More	—	2 Lines or More	—	2 Lines or More	—
Railway, Standard Gauge	—	2 Lines or More	—	2 Lines or More	—	2 Lines or More	—
Railway, Narrow Gauge	—	2 Lines or More	—	2 Lines or More	—	2 Lines or More	—
Telephone, Trench Route	—	2 Lines or More	—	2 Lines or More	—	2 Lines or More	—
Abandoned	—	2 Lines or More	—	2 Lines or More	—	2 Lines or More	—
Single Track	—	2 Lines or More	—	2 Lines or More	—	2 Lines or More	—
Stop	—	2 Lines or More	—	2 Lines or More	—	2 Lines or More	—

Universal Transverse Mercator Projection.

## JENNINGS RIVER

### BRITISH COLUMBIA

Scale 1:250,000  
1 Inch to 4 Miles Approximately

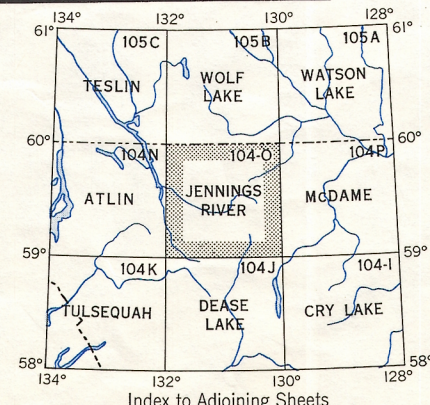


Contour interval 500 Feet  
All Elevations in Feet above Mean Sea Level.

The general public may obtain copies of this map from the  
Map Distribution Office, Dept. of Mines and Technical  
Surveys, Ottawa.

#### REFERENCE

Building	•	Fire Lookout Tower	•	Contours, Elevation	—
School	•	Wireless Station	•	Contours, Approximate	—
Post Office	•	Mine	•	Contours, Depression	—
Church	•	Chm.	•	Escher	—
Stream, Indefinite or Unsurveyed	—	Wooded Areas	—	Swampy	—
Stream, Intermittent	—	Navigable Canal	—	Rapids and Falls	—
Stream, in Dry River Bed	—	Dam	—	Marsh or Swamp	—
Shaded Stream	—	Lighthouse	•	Glacier or Snowfield	—
Marsh or Swamp	—	Aerodrome (Elevation in feet)	•	Sand, Gravel or Mud	—
Light House	•	Seaplane Anchorage	•		



JENNINGS RIVER B.C.  
SHEET 104-O  
FIRST EDITION

104 O  
Ed 1