

This document was produced by scanning the original publication.

Ce document est le produit d'une numérisation par balayage de la publication originale.

98 D

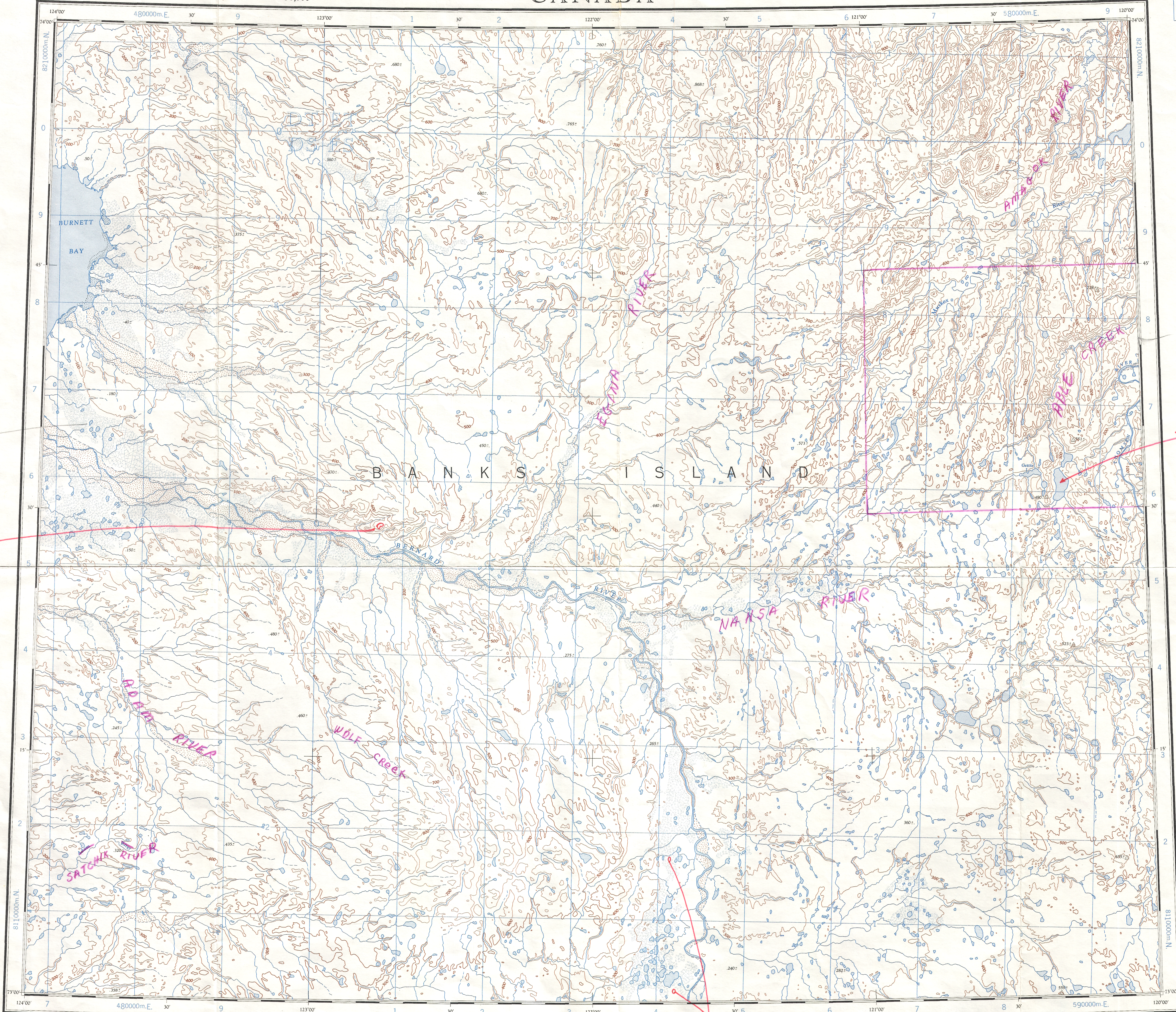
1:250,000

CANADA

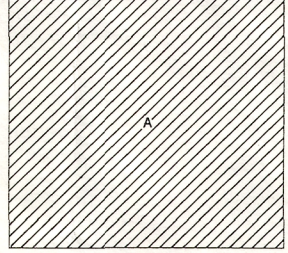
EDITION 1

98 D

Refer to this map as: 98 D EDITION 1 ASE SERIES A 502



COMPILED DIAGRAM - SOURCES UTILISÉES



A-Compiled photogrammetrically from 1960-62 aerial photography.
A-Etablie par procédés photogrammétriques à partir de photographies aériennes, de 1960-62.

Produced by the ARMY SURVEY ESTABLISHMENT, R.C.E.
Information depicted current as of 1962. Printed 1966.
The daily change of the North Magnetic Pole causes the magnetic compass to be very erratic in this area.
1964 Magnetic declination for this map varies from 52°27' easterly at the centre of the west edge to 53°33' easterly at the centre of the east edge.

Roads: loose surface, cart track, trail, Spot elevation: precise, approximate, Boundary monument, Pingo, Depression contours, Cliff or low relief, Esker.

Miles 5 0 5 10 15 20 25 30
Kilometres 5 0 5 10 15 20 25 30

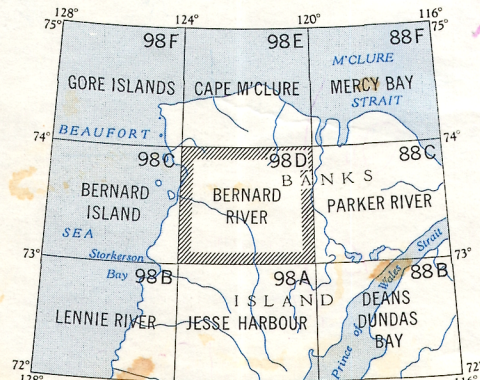
Transverse Mercator Projection
North American Datum 1927
Contour Interval 100 feet
Elevations in feet above Mean Sea Level

BERNARD RIVER
DISTRICT OF FRANKLIN
NORTHWEST TERRITORIES
Scale 1:250,000 Échelle

Projection transverse de Mercator
Réseau géodésique nord-américain unifié 1927
Équidistance des courbes 100 pieds
Élévations en pieds au-dessus du niveau moyen de la mer

Publié par le SERVICE TOPOGRAPHIQUE DE L'ARMÉE,
(G.R.C.) Renseignements à jour en 1962. Imprimé en 1966.
La variation diurne du pôle Nord magnétique effleure le compas magnétique dans cette région.
La déclinaison magnétique (1964) varie de 52°27' vers l'est au centre de la bordure ouest de la feuille à 53°33' vers l'est au centre de la bordure est.

Building, Post office, Church, School, Astronomical monument, R.C.M.P. Detachment, Horizontal control point, Lighthouse, Interim stream, Intermittent lake, Rapids, chute, Marsh or Swamp, Tundra polygons, Tundra ponds.



Index to adjoining maps of the National Topographic System
Tableau d'assemblage du Système National de Référence Cartographique
BERNARD RIVER
98 D
EDITION 1

GRID ZONE DESIGNATION 10 X
TO GIVE A REFERENCE TO NEAREST 1000 METRES
EXAMPLE: STREAM JUNCTION
SQUARE: Read letters of 100,000 m. square: E S
EASTING: Read number on grid line immediately to left of point. Estimate tenth of a square from this line eastward to point.
NORTHING: Read number on grid line immediately below point. Estimate tenth of a square from this line northward to point.
MILITARY GRID REFERENCE (to nearest 1,000 metres) ES4678
If reporting beyond 15° in any direction, prefix Grid Zone Designation as: 10XES4678

TEN THOUSAND METRE
UNIVERSAL TRANSVERSE MERCATOR GRID
ZONE 10

NAME CHANGES BY TOPONYMY
20/01/82 JAR
Minor corrections 12/06/84m
REPRINT
SEPT 9-74
98-D
10