

Ce document est le produit d'une
numérisation par balayage
de la publication originale.

NATIONAL TOPOGRAPHIC SYSTEM

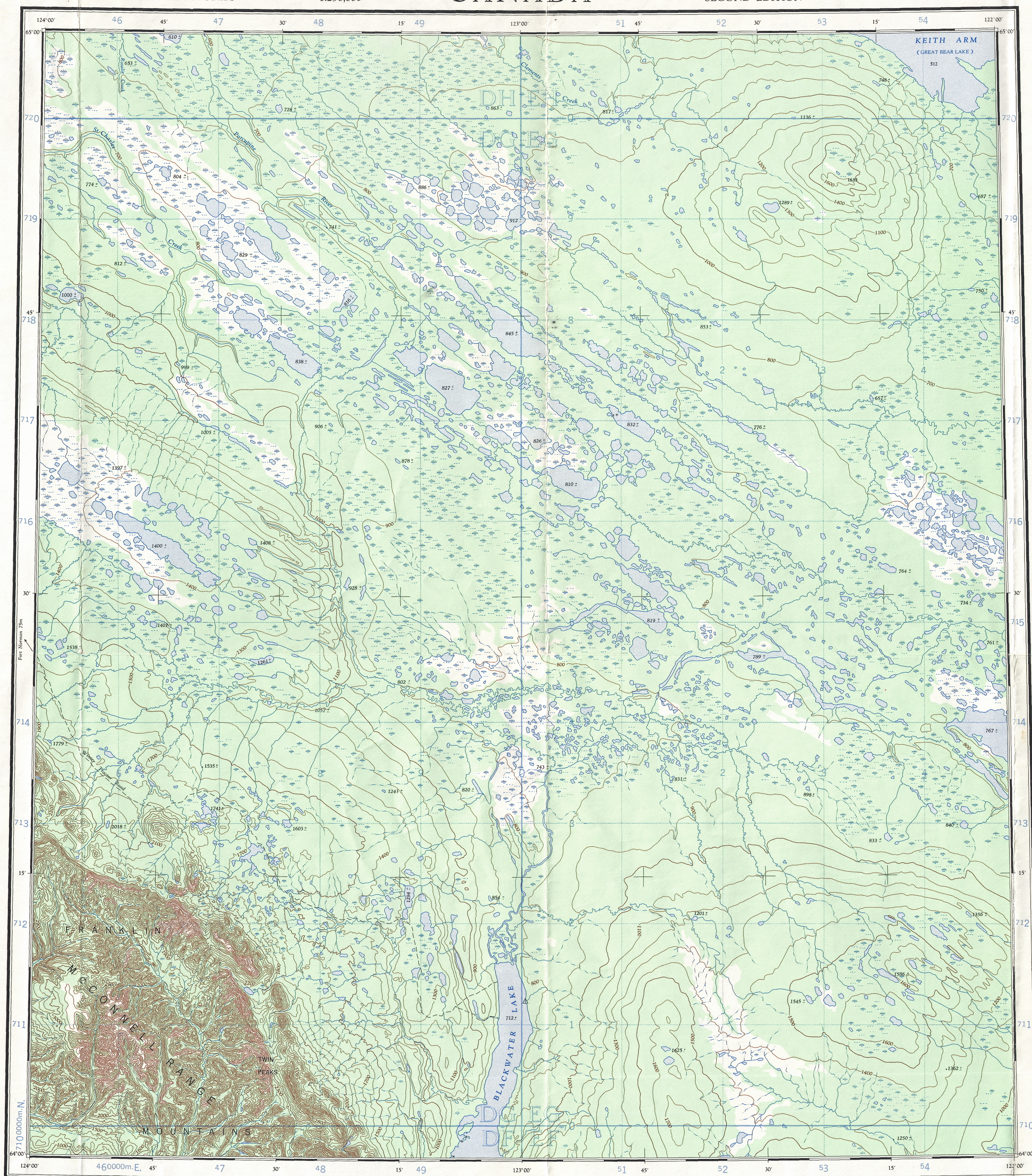
1:250,000

CANADA

SECOND EDITION

SHEET 96 B

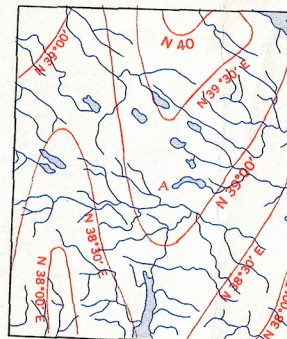
Refer to
this Map as : 96 B
EDITION 2 ASE
SERIES A 502



| GRID ZONE DESIGNATION | 100,000 M. SQUARE IDENTIFICATION |
|--|----------------------------------|
| 10W | DHTEH 720 DG EG 710 50 |
| TO GIVE A REFERENCE TO NEAREST 1000 METRES | |
| EXAMPLE TRAIL JUNCTION | |
| SQUARE: Read letters of 100,000 m. square immediately to left of point. | DG |
| Estimate tenths of a square from this line eastward to point. | 9 |
| NORTHING: Read number on grid line immediately below point. | 3 |
| Estimate tenths of a square from this line northward to point. | 93 |
| MILITARY GRID REFERENCE (to nearest 1,000 metres) DG9312 | 1 |
| If reporting beyond 18° in any direction, prefix Grid Zone Designation as: 10WDG9312 | 2 |
| | 12 |

TEN THOUSAND METRE
UNIVERSAL TRANSVERSE MERCATOR GRID
ZONE 10

DECLINATION OF THE COMPASS NEEDLE, 1958



Surveyed, compiled, drawn and printed by the
ARMY SURVEY ESTABLISHMENT, R.C.A.F. 1053-50
Aerial photography by the R.C.A.F. 1050

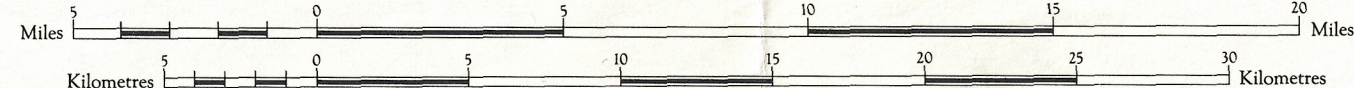
REFERENCE

| | |
|---------------------------------|-------------------------------------|
| Road, Road Surface, All Weather | More than 2 Lanes Wide |
| " " " " " " | 2 Lanes Road |
| " " " " " " | Less than 2 Lanes |
| " " " " " " | All Weather |
| " " " " " " | Dry Weather |
| " " " " " " | Cart Track |
| " " " " " " | Trail |
| " " " " " " | Single Track |
| " " " " " " | Boundary, International |
| " " " " " " | Province or State |
| " " " " " " | Country or District |
| " " " " " " | Reservation, Indian, Military, etc. |

BLACKWATER LAKE

DISTRICT OF MACKENZIE
NORTHWEST TERRITORIES

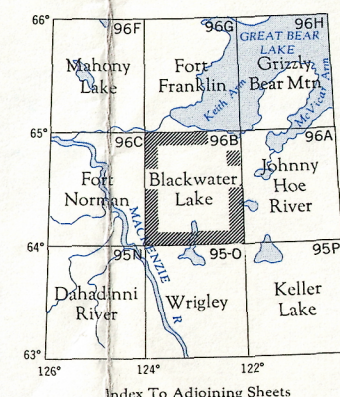
Scale 1:250,000
1 inch to 4 miles approximately.



Contour Interval 100 Feet
Elevations in Feet above Mean Sea Level.
Transverse Mercator Projection
North American Datum 1927
Preliminary 1955

REFERENCE

| | |
|--------------------|--------------------------|
| Church, School | Horizontal Control Point |
| Settlement, Town | Spot Elevation, in feet |
| Contour, Elevation | Forest, undisturbed |
| " " " " | Swamp or Marsh |
| " " " " | Approximate |
| " " " " | Dry River Bed |
| " " " " | Stream, Intermittent |
| " " " " | Ferry |
| " " " " | Lighthouse |
| " " " " | Dam |
| " " " " | Falls |
| " " " " | Airfield, on Land |
| " " " " | Water |
| " " " " | Landing Ground |
| " " " " | Anchorages |
| " " " " | Power Transmission Line |



BLACKWATER LAKE
SHEET 96 B
EDITION 2 ASE

REPRINT
VAN 24-73

96-B