

This document was produced
by scanning the original publication.
Ce document est le produit d'une
numérisation par balayage
de la publication originale.

NATIONAL TOPOGRAPHIC SYSTEM

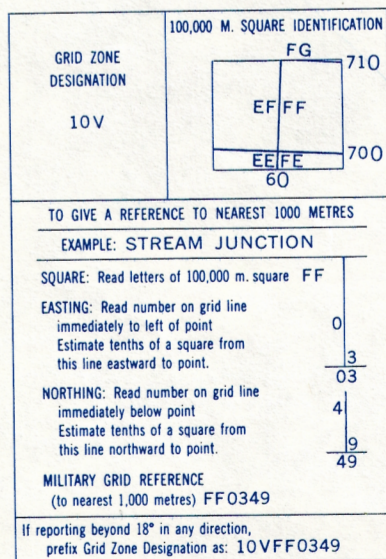
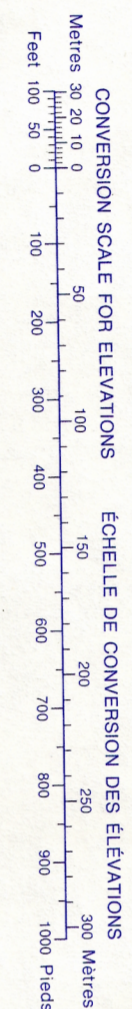
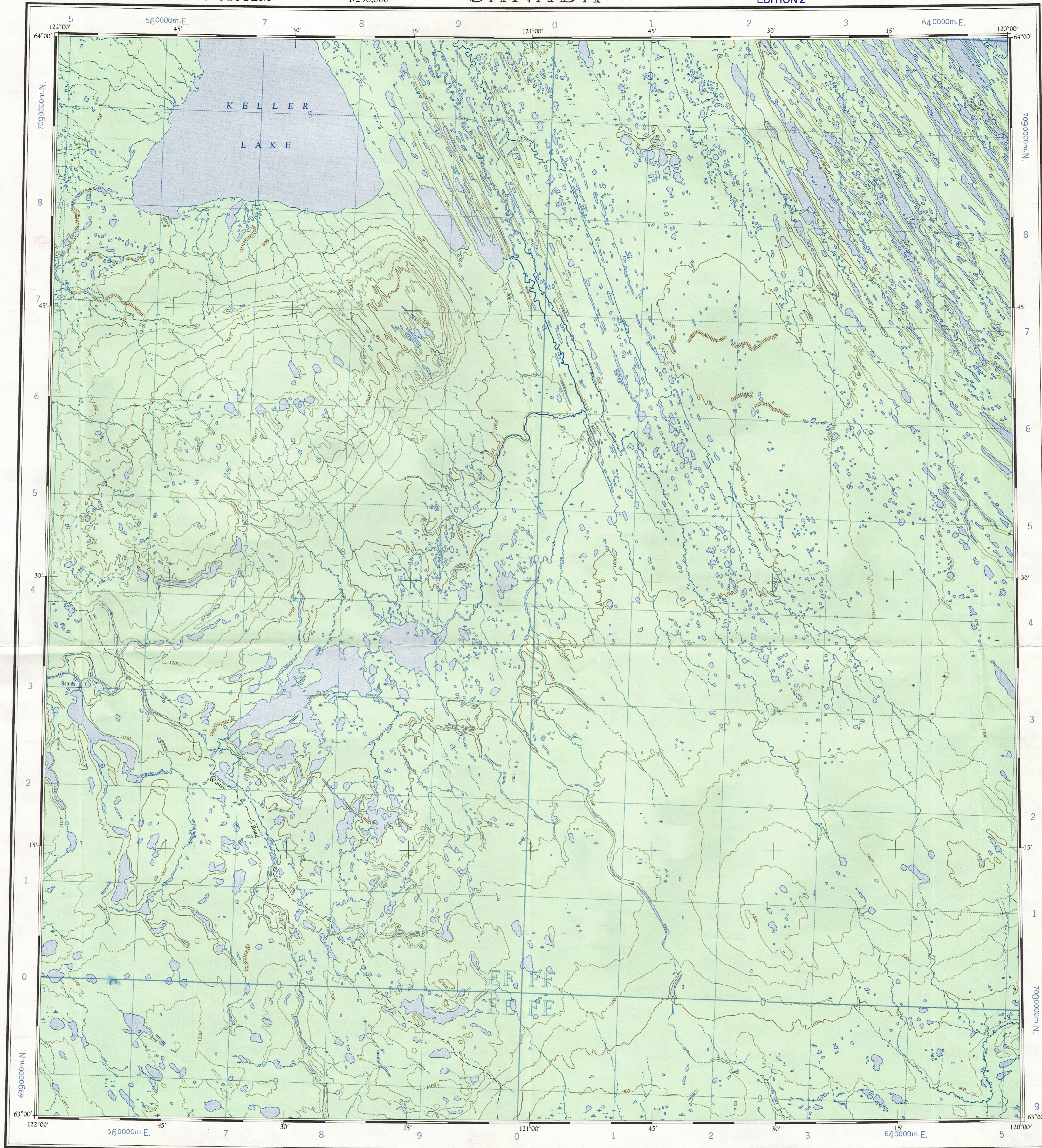
1:250,000

CANADA

EDITION 2

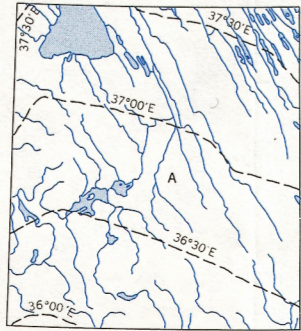
SHEET 95 P

Military users,
refer to this map as:
Référence de cette carte
pour usage militaire:
SERIES A 502 SÉRIE
MAP 95 P CARTE
EDITION 2 MCE EDITION



TEN THOUSAND METRE
UNIVERSAL TRANSVERSE MERCATOR GRID
ZONE 10

THE DECLINATION OF THE COMPASS NEEDLE 1958



Produced and printed by the SURVEYS AND MAPPING
BRANCH, DEPARTMENT OF MINES AND TECHNICAL
SURVEYS, 1959, from air photographs taken in 1950 and
1951.

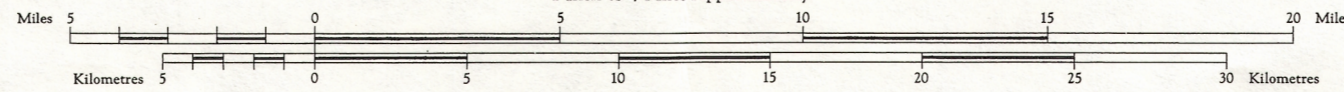
Interim corrections 1979
© 1979 Her Majesty the Queen in Right of Canada.
Department of Energy, Mines and Resources.

Corrections provisoires 1979
© 1979 Sa Majesté La Reine du Chef du Canada.
Ministère de l'Énergie, des Mines et des Ressources.

Transverse Mercator Projection

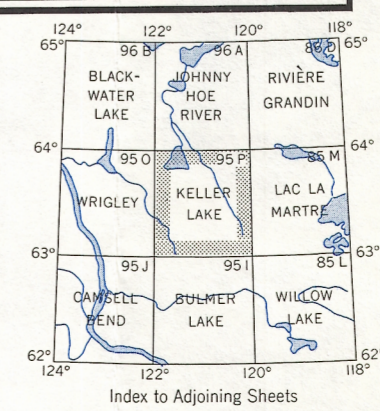
KELLER LAKE
NORTHWEST TERRITORIES
DISTRICT OF MACKENZIE

Scale 1:250,000
1 Inch to 4 Miles Approximately



Copies may be obtained from the Map Distribution
Office, Department of Mines and Technical Surveys,
Ottawa.

Streams:
intermittent or dry.....
indeline.....
Rapid, falls.....
March or swamp.....
Contours:
elevation.....
depression.....
approximate.....
Esker.....
Forest.....



KELLER LAKE
95P
EDITION 2

95-P