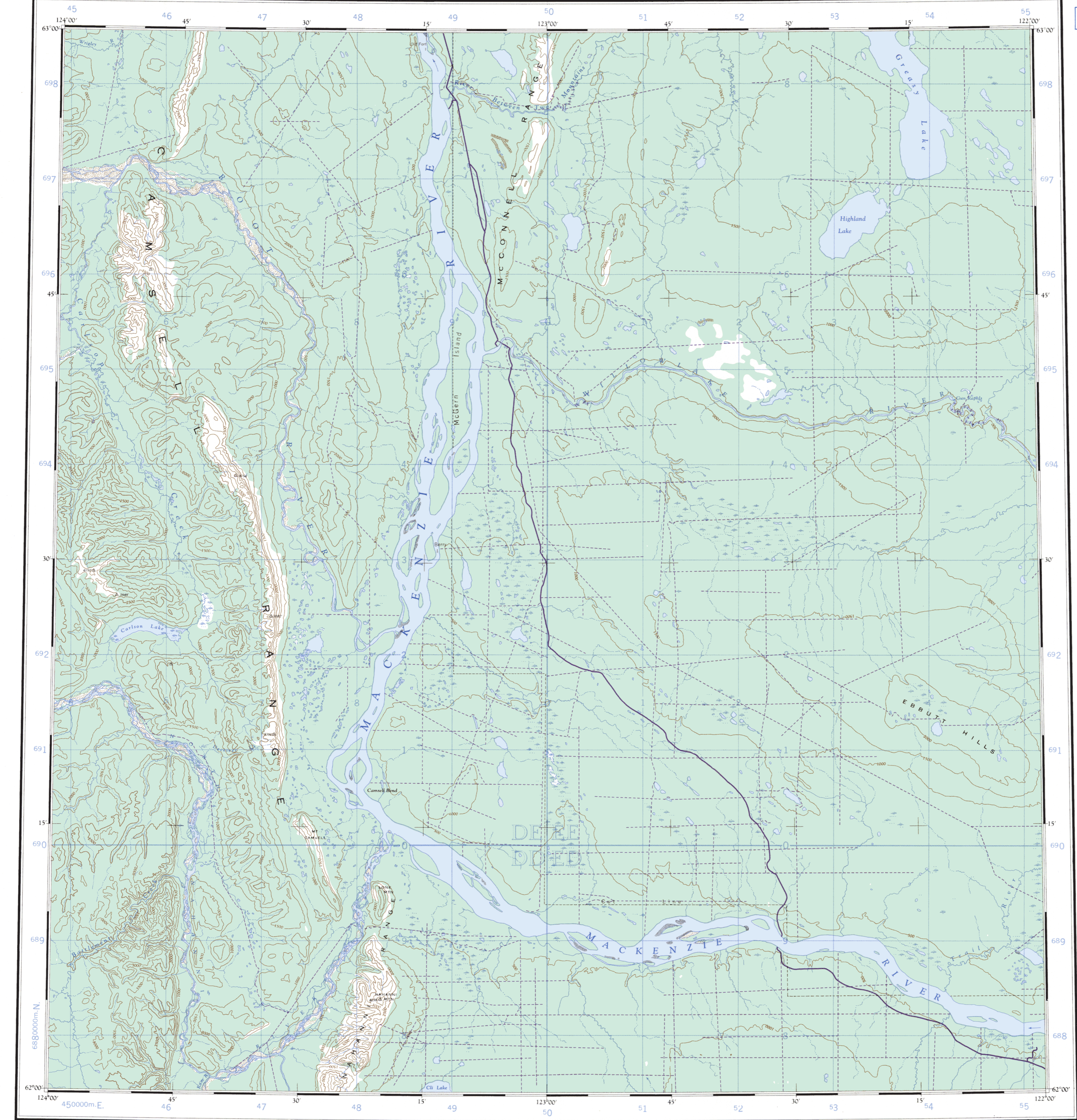
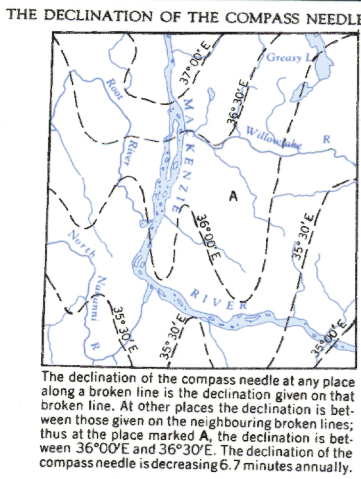


Refer to this Map as: 95J EDITION 3 MCE SERIES A502



100,000 M. SQUARE IDENTIFICATION	
GRID ZONE DESIGNATION	DE EE DD ED 50
10V	690
TO GIVE A REFERENCE TO NEAREST 1000 METRES	
EXAMPLE: GUN RAPIDS	
SQUARE: Read letters of 100,000 m. square immediately to left of point	EE
EASTING: Read number on grid line immediately to left of point	43
NORTHING: Read number on grid line immediately below point	47
MILITARY GRID REFERENCE (to nearest 1,000 metres)	EE4347
If reporting beyond 18° in any direction, prefix Grid Zone Designation as: 10VEE4347	

TEN THOUSAND METRE
UNIVERSAL TRANSVERSE MERCATOR GRID
ZONE 10



Produced and Printed by the SURVEYS AND MAPPING BRANCH, DEPARTMENT OF MINES AND TECHNICAL SURVEYS, 1959, from air photographs taken in 1947, 1948, and 1953. Overprinted and published in 1979.

REFERENCE

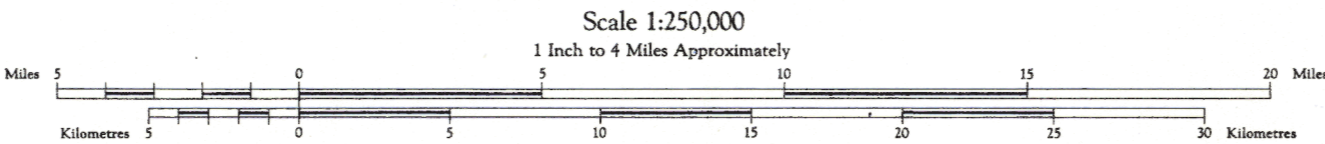
Wagon or winter road
Trail or portage
Village or settlement
Post office
Building or cabin
R.C.M.P. post
Horizontal control point
Astronomical position
Spot elevation (in feet)
Ice or stabilized surface, all weather, less than 2 lanes

© 1979, Her Majesty the Queen in Right of Canada.
Department of Energy, Mines and Resources.

Transverse Mercator Projection

CAMSELL BEND

NORTHWEST TERRITORIES
DISTRICT OF MACKENZIE

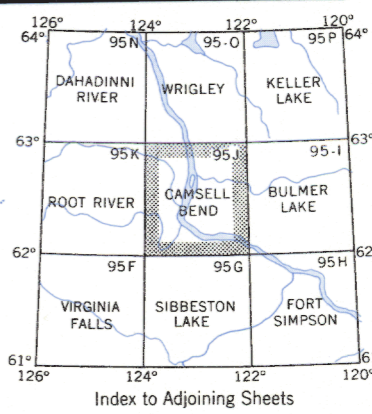


Contours Interval 500 Feet
Elevations in Feet above Mean Sea Level
North American Datum 1927

Copies may be obtained from the Canada Map Office, Department of Energy, Mines and Resources, Ottawa, or your nearest map dealer.

REFERENCE

Streams: intermittent or dry
Rapids
Marsh or swamp
Sand, gravel or mud
Intermittent lake
Contours: elevation
depression
approximate
Esker
Forest



CAMSELL BEND
95J
EDITION 3