

This document was produced
by scanning the original publication.

NATIONAL TOPOGRAPHIC SYSTEM

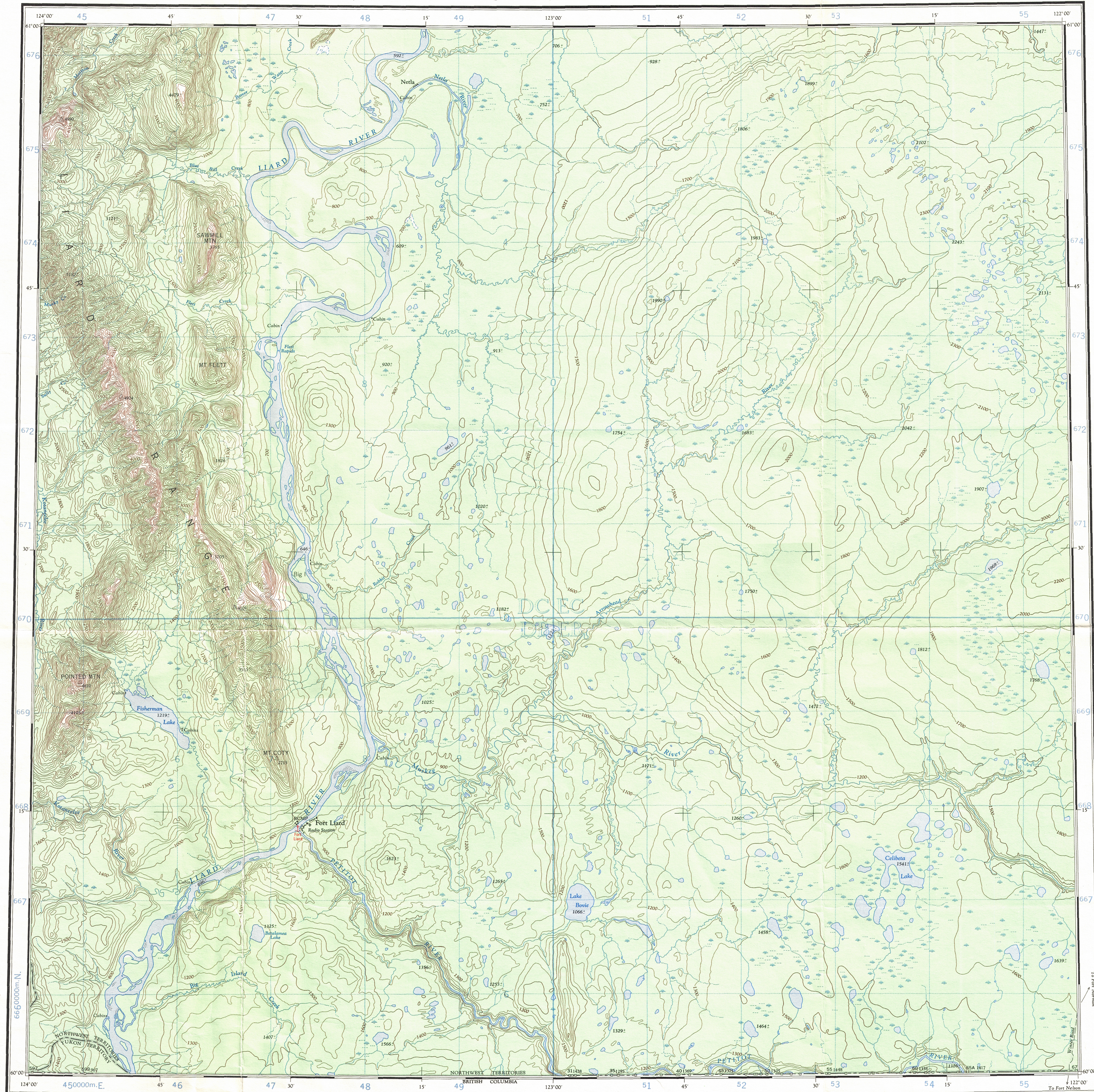
1:250,000

CANADA

SECOND EDITION

SHEET 95 B

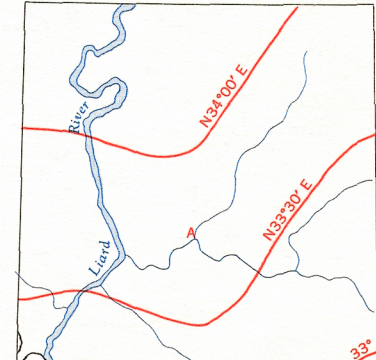
Refer to this
Map as:
95 B
EDITION 2 ASE
SERIES A502



GRID ZONE IDENTIFICATION	
GRID ZONE DESIGNATION	10V
100,000 M. SQUARE IDENTIFICATION	DC EC DB EB 50
TO GIVE A REFERENCE TO NEAREST 1000 METRES	
EXAMPLE: CABIN	
SQUARE: Read letters of 100,000 m. square	DC
EASTING: Read number on grid line immediately to left of point. Estimate tenths of a square from this line eastward to point.	7 4 74
NORTHING: Read number on grid line immediately below point. Estimate tenths of a square from this line northward to point.	0 6 06
MILITARY GRID REFERENCE (to nearest 1,000 metres)	DC 7406
If reporting beyond 10° in any direction, prefix Grid Zone Designation as:	10VDC 7406

TEN THOUSAND METRE
UNIVERSAL TRANSVERSE MERCATOR
ZONE 10

THE DECLINATION OF THE COMPASS NEEDLE, 1958



The declination of the compass needle at any place along a red line is the declination given on that red line. At other places the declination is between those given on the neighbouring red lines that at the place marked A, the declination is between N. 13° 30' E. and N. 14° E. The yearly declination of the compass needle are decreasing 5.5 minutes annually.

Surveyed, compiled, drawn and printed by the
ARMY SURVEY ESTABLISHMENT R.C.E., 1959-58
Aerial photography by the R.C.A.F.

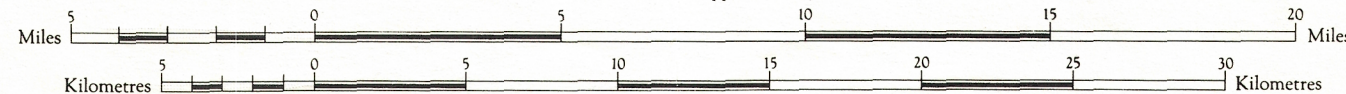
REFERENCE

Road, Hard Surface, All Weather	More than 2 Lanes Wide
" " " " " " " "	Lanes
" " " " " " " "	Less than 2 Lanes
Cut Track, Trail	Trail
Railway, Multiple Track	Single Track
Boundary, International	Boundary, Provincial
" " " " " " " "	Province or State
" " " " " " " "	County or District
" " " " " " " "	Reservations, Indian, Military, etc.

FORT LIARD

DISTRICT OF MACKENZIE
NORTHWEST TERRITORIES-YUKON TERRITORY

Scale 1:250,000
1 Inch to 4 Miles approximately.

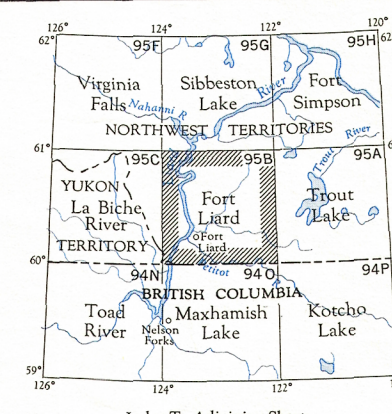


Copies may be obtained from
The Map Distribution Office
Dept. of Mines and Technical Surveys,
Ottawa.

Contour Interval 100 Feet
Elevations in Feet above Mean Sea Level
Transverse Mercator Projection
North American Datum 1927
Preliminary Shown 1953

REFERENCE

Church, School	Horizontal Control Point
Settlement, Town	Spot Elevation, in feet
Contours, Elevation	Forest, unclassified
" " " " " " " "	Swamp or Marsh
" " " " " " " "	Approximate
Dry River Bed	Lighthouse
Stream, Intermittent	Ferry
" " " " " " " "	W. L. 1125
" " " " " " " "	Mud
" " " " " " " "	Sand
" " " " " " " "	Airfield
" " " " " " " "	Water
" " " " " " " "	Landing Ground
" " " " " " " "	Anchorage
" " " " " " " "	Power Transmission Line



FORT LIARD
SHEET 95 B
EDITION 2 ASE