

Ce document est le produit d'une numérisation par balayage de la publication originale.
This document was produced by scanning the original publication.

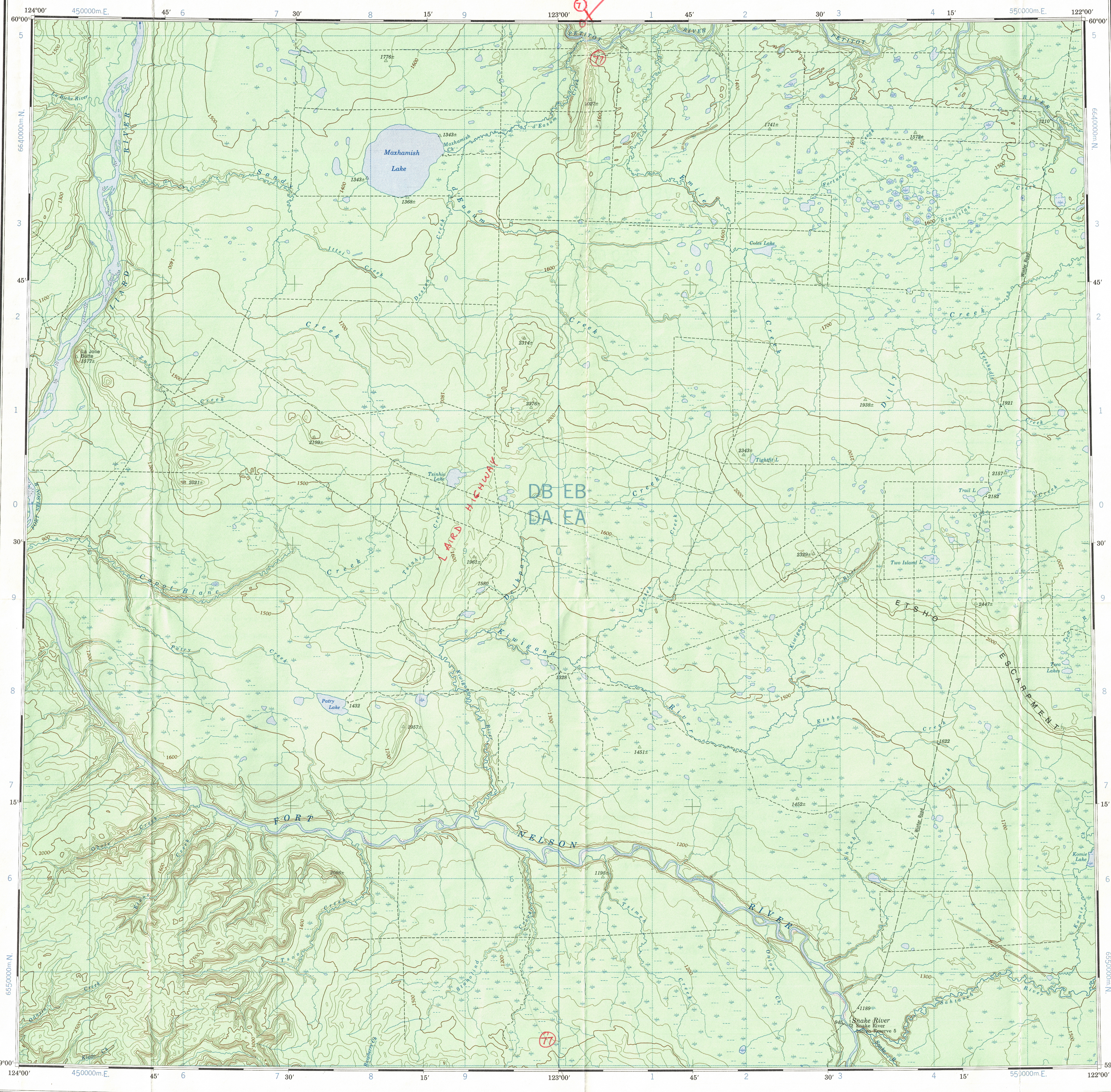
94-O

1:250,000

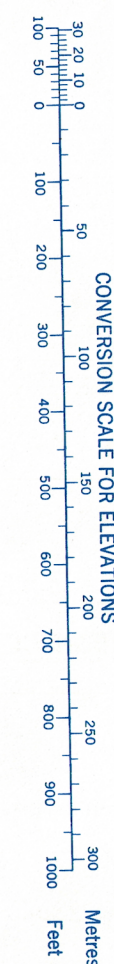
CANADA

EDITION 3

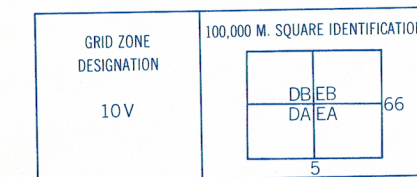
94-O



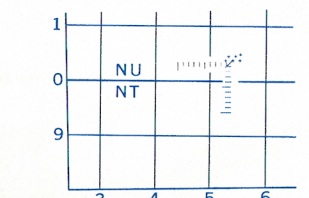
Refer to this map as: 94-O EDITION 3 MCE SERIES A 502



TEN THOUSAND METRE
UNIVERSAL TRANSVERSE MERCATOR GRID
ZONE 10



EXAMPLE OF METHOD USED
TO GIVE A REFERENCE TO NEAREST 1000 METRES
THE FOLLOWING GRID REFERENCE IS A SAMPLE ONLY
AND DOES NOT REFER TO A POINT ON THIS MAP

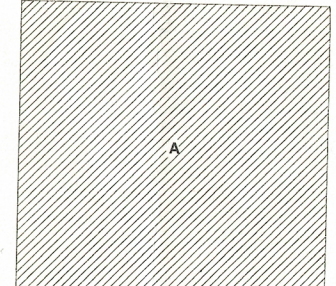


REFERENCE POINT ROCKS (as above)
SQUARE: Read letters of 100,000 m. square NU NT
EASTING: Read number on grid line immediately to left of point
Estimate tenths of a square from this line eastward to point.
NORTHING: Read number on grid line immediately below point
Estimate tenths of a square from this line northward to point.

EXAMPLE MILITARY GRID REFERENCE NUS404
If reporting beyond 10° in any direction, prefix Grid Zone Designation as 15NUN5404

TOPOGRAPHICAL SURVEY DIRECTORATE
SERVICE TOPOGRAPHIQUE
DATE 8 June 78
Q.C. APPROVES RELEASE
Q.C. APPROUVE

RELIABILITY DIAGRAM - CROQUIS D'EXACTITUDE



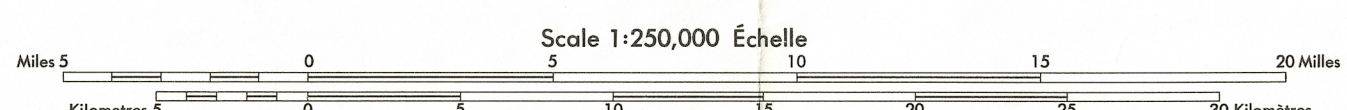
A - Large Scale mapping, photogrammetric 1954-57
A - Cartographie à grande échelle, photogrammétrie 1954-57

Produced, 1969, by the SURVEYS AND MAPPING BRANCH,
DEPARTMENT OF ENERGY, MINES AND RESOURCES.
Imprimé en 1971.

Magnetic declination 1971 varies from 31°16' westerly at
centre of west edge to 31°10' westerly at centre of east edge.
Mean annual change 4.7 westerly.

Roads:
cart track.....
trail or portage.....
FOR COMPLETE REFERENCE SEE REVERSE SIDE

MAXHAMISH LAKE
PEACE RIVER DISTRICT
BRITISH COLUMBIA

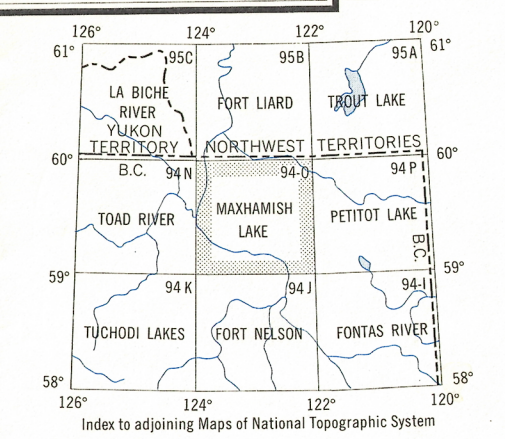


CONTOUR INTERVAL 100 FEET
Elevations in Feet above Mean Sea Level
North American Datum 1927
Projection Transverse Mercator
Copies may be obtained from the Map Distribution Office,
Department of Energy, Mines and Resources, Ottawa.

Établi en 1969, par la DIRECTION DES LEVÉS ET DE LA CARTOGRAPHIE,
MINISTÈRE DE L'ÉNERGIE, DES MINES ET DES RESSOURCES.
Imprimé en 1971.

La déclinaison magnétique pour 1971 varie de 31°16' Est au
centre de la limite Ouest à 31°10' Est au centre de la limite
Est. Variation moyenne annuelle 4,7 Ouest.

Routes:
de terre.....
sentier ou portage.....
POUR UNE LISTE COMPLÈTE DES SIGNES, VOIR AU VERSO



MAXHAMISH LAKE
94-O
EDITION 3
Reprint.