

Ce document est le produit d'une numérisation par balayage de la publication originale.

931

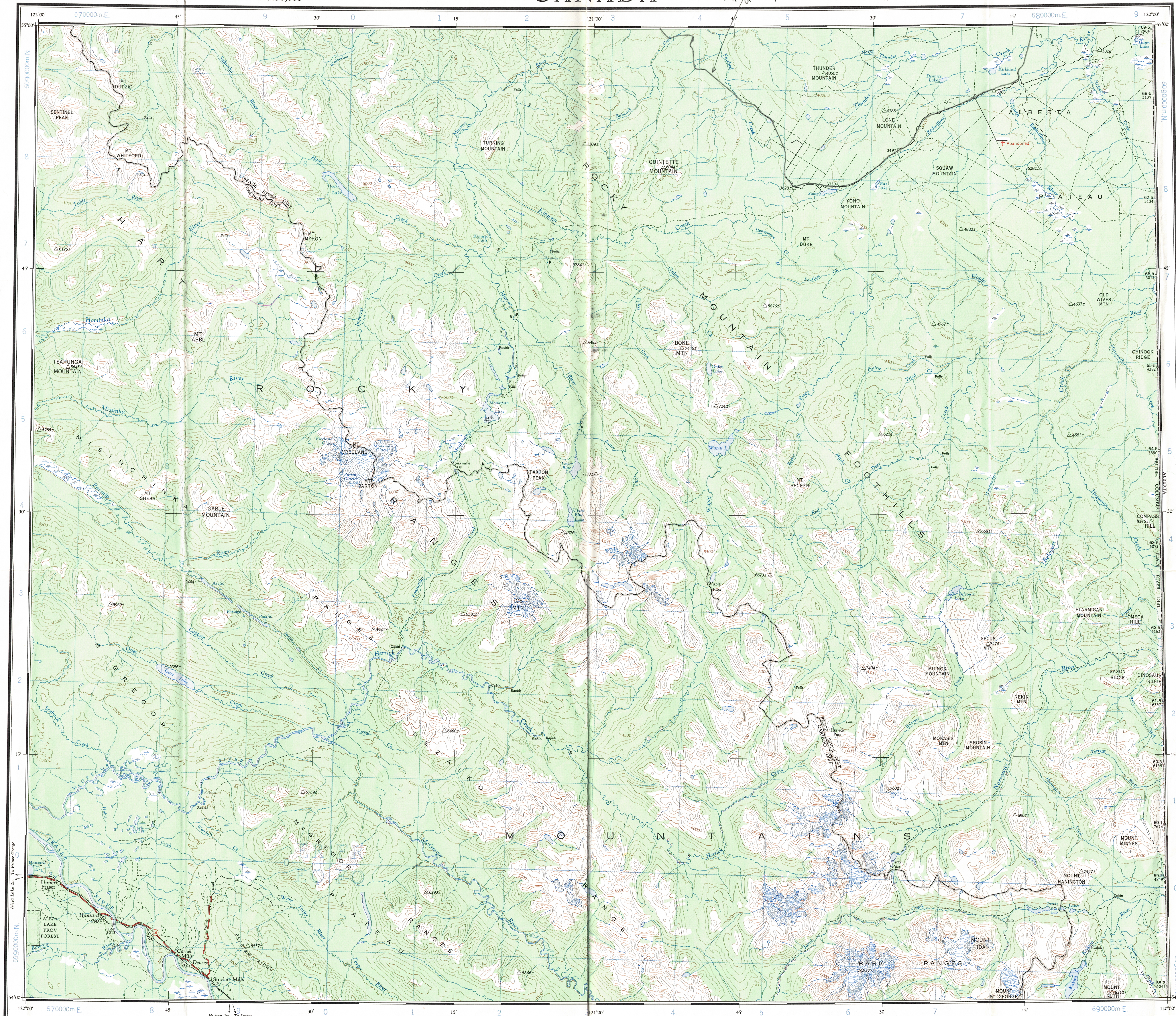
1:250,000

CANADA

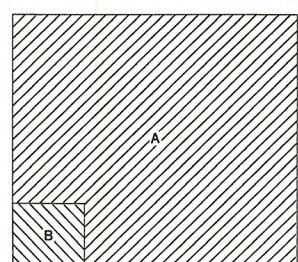
EDITION 1

931

Refer to this map as: 931 EDITION 1 ASE SERIES A 502



COMPILATION DIAGRAM—SOURCES UTILISÉES



A- Large scale topographic maps, photogrammetric, 1956-59
B- Large scale topographic maps, photogrammetric, 1961
C- Aerial photographs and photogrammetric maps, 1956-59
D- Cartes topographiques et photogramétriques à grande échelle, de 1961.

Produced by the ARMY SURVEY ESTABLISHMENT, R.C.E.
Information depicted current as of 1963. Printed 1965.
1964 Magnetic declination for this map varies from 26°44' easterly at the centre of the west edge to 26°24' easterly at the centre of the east edge. Annual change decreasing 3.7'

MONKMAN PASS

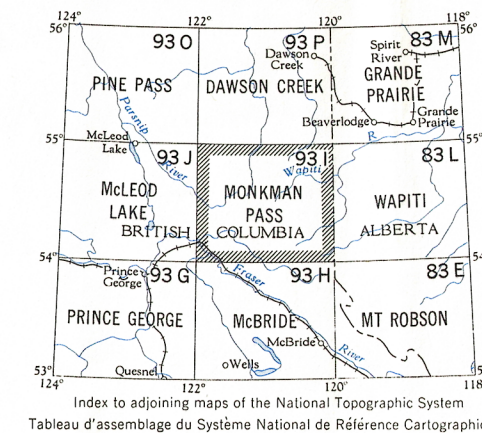
BRITISH COLUMBIA

Scale 1:250,000 Échelle

Miles 5 0 10 15 20 30
Kilometres 5 0 10 15 20 30

Transverse Mercator Projection
North American Datum 1927
Contours interval 500 feet
Elevations in feet above Mean Sea Level
Copies may be obtained from the Map Distribution Office,
Department of Mines and Technical Surveys, Ottawa

Publié par le SERVICE TOPOGRAPHIQUE DE L'ARMÉE,
S.A.C. Remarque: à jour en 1963. Imprimé en 1965.
La déclinaison magnétique (1964) varie de 26°44' vers l'est au centre de la bordure ouest de la feuille à 26°24' vers l'est au centre de la bordure est. Variation annuelle décroissante 3.7'



MONKMAN PASS
931
EDITION 1

GRID ZONE DESIGNATION
10U
100,000 M. SQUARE IDENTIFICATION
EXAMPLE: FALLS
SQUARE: Road letters of 100,000 m. square
EASTING: Road number on grid line immediately to left of point
NORTHING: Road number on grid line immediately below point
MILITARY GRID REFERENCE
If reporting beyond 10' in any direction, prefix Grid Zone Designation as: 10UFR1672

TEN THOUSAND METRE
UNIVERSAL TRANSVERSE MERCATOR GRID
ZONE 10

TOPOGRAPHICAL SURVEY DIRECTORATE
SERVICE TOPOGRAPHIQUE
C.Q. APPROVES REFERENCE
C.Q. APPROUVE

93-1