



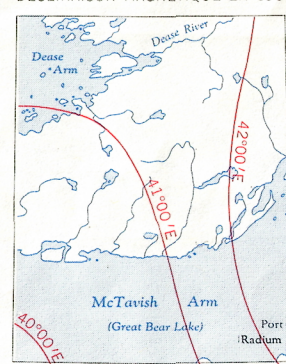
Refer to this map as: 86 L EDITION 1 ASE SERIES A 502

X GREEN IN SAND

X GREEN IN SAND

GREEN IN SAND

THE DECLINATION OF THE COMPASS NEEDLE 1964
DÉCLINAISON MAGNÉTIQUE EN 1964



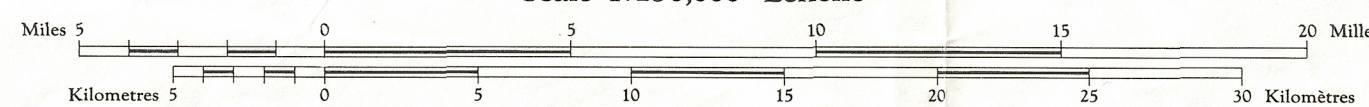
The declination of the compass needle is decreasing 8.5 minutes annually.
La déclinaison magnétique diminue de 8.5 minutes annuellement.

Produced by the ARMY SURVEY ESTABLISHMENT, R.C.E.
Information depicted current as of 1963. Printed 1965.
Copies may be obtained from the Map Distribution Office,
Department of Mines and Technical Surveys, Ottawa.

TAKAATCHO RIVER

DISTRICT OF MACKENZIE
NORTHWEST TERRITORIES

Scale 1:250,000 Échelle



Transverse Mercator Projection
North American Datum 1927
Contour Interval 100 feet
Elevations in feet above Mean Sea Level

Projection transverse de Mercator
Réseau géodésique nord-américain unifié 1927
Équidistance des courbes 100 pieds
Élévations en pieds au-dessus du niveau moyen de la mer

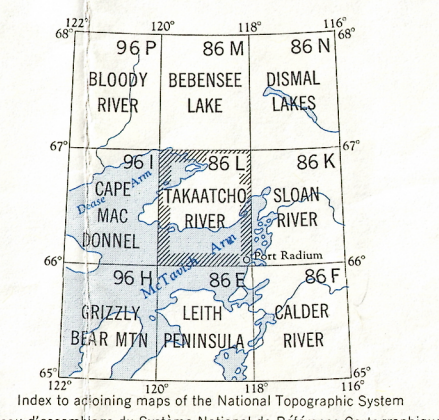
Publiée par le SERVICE TOPOGRAPHIQUE DE L'ARMÉE,
(G.R.C.), Renseignements à jour en 1963. Imprimée en 1965.

Ces cartes sont en vente au Bureau de distribution des cartes,
ministère des Mines et des Relevés techniques, Ottawa.

GRID ZONE DESIGNATION	
11W	74
TO GIVE A REFERENCE TO NEAREST 1000 METRES	
EXAMPLE: POND	
SQUARE: Read letters of 100,000 m. square MD	MD
EASTING: Read number on grid line immediately to left of point	1
Estimate tenths of a square from this line eastward to point	18
NORTHING: Read number on grid line immediately below point	9
Estimate tenths of a square from this line northward to point	3
MILITARY GRID REFERENCE (to nearest 1,000 metres)	MD1893
If reporting beyond 18° in any direction prefix Grid Zone Designation as: 11WMD1893	

TEN THOUSAND METRE
UNIVERSAL TRANSVERSE MERCATOR GRID
ZONE 11

TOPOGRAPHICAL SURVEY DIRECTORATE
SERVICE TOPOGRAPHIQUE
DATE 10-12-84
Q.C. APPROVES RELEASE
C.Q. APPROUVE



TAKAATCHO RIVER
86 L
EDITION 1

REPRINT

7-98