

Ce document est le produit d'une
numérisation par balayage
de la publication originale.

85 L

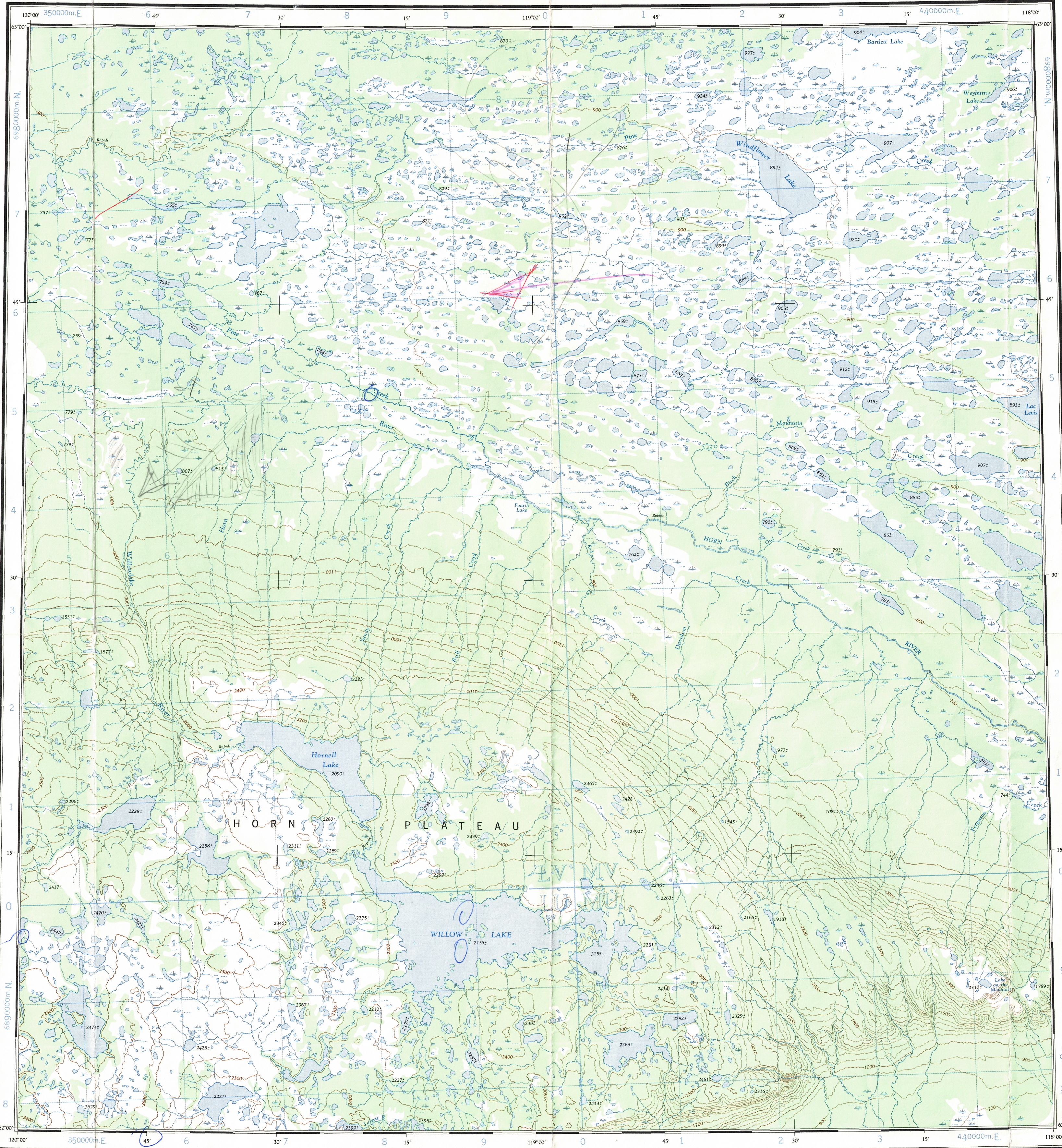
1:250,000

CANADA

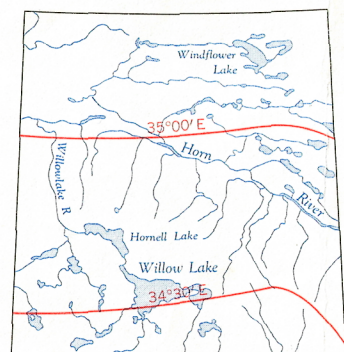
EDITION 3

85 L

Refer to
this map as:
85 L
EDITION 3 ASE
SERIES A 502



THE DECLINATION OF THE COMPASS NEEDLE 1961
DECLINAISON MAGNETIQUE EN 1961



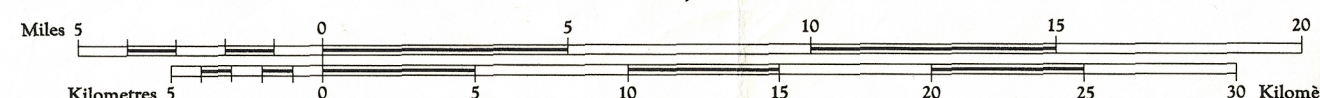
The declination of the compass needle is decreasing
5.6' minutes annually.
La déclinaison magnétique décroît de 5.6 minutes annuellement.

Produced by the ARMY SURVEY ESTABLISHMENT
R.C.E. 1958-61. Aerial photography 1950.
Copies may be obtained from the Map Distribution Office,
Department of Mines and Technical Surveys, Ottawa.

WILLOW LAKE

DISTRICT OF MACKENZIE
NORTHWEST TERRITORIES

Scale 1:250,000 Échelle



Transverse Mercator Projection
North American Datum 1927(1953)
Contour Interval 100 feet
Elevations in feet above Mean Sea Level

Projection Transverse de Mercator
Réseau géodésique nord-américain unifié 1927(1953)
Équidistance des courbes: 100 pieds
Élévations en pieds au-dessus du niveau moyen de la mer

Préparé par le SERVICE TOPOGRAPHIQUE DE L'ARMÉE,
(G.R.C.) 1958-61. Photographie aérienne 1950.
Ces cartes sont en vente au Bureau de distribution des cartes,
ministère des Mines et des Relevés techniques, Ottawa.

GRID ZONE DESIGNATION	100,000 M. SQUARE IDENTIFICATION									
11V	<table border="1"><tr><td>L</td><td>M</td><td>V</td></tr><tr><td>U</td><td>W</td><td>X</td></tr><tr><td>Y</td><td>Z</td><td>AA</td></tr></table> 69	L	M	V	U	W	X	Y	Z	AA
L	M	V								
U	W	X								
Y	Z	AA								

TO GIVE A REFERENCE TO NEAREST 1000 METRES

EXAMPLE: LAKE

SQUARE: Read letters of 100,000 m. square

EASTING: Read number on grid line immediately to left of point
Estimate tenth of a square from this line eastward to point.

NORTHING: Read number on grid line immediately below point
Estimate tenth of a square from this line northward to point.

MILITARY GRID REFERENCE (to nearest 1,000 metres) MV1826

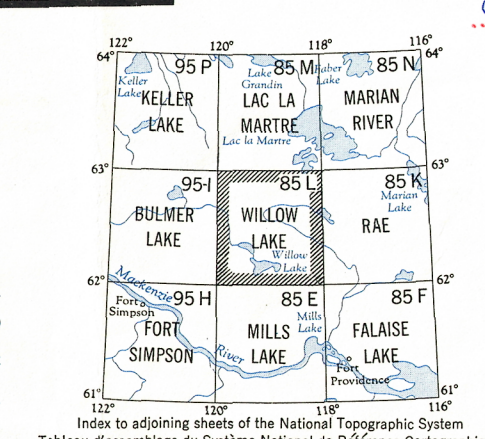
If reporting beyond 18° in any direction,
prefix Grid Zone Designation as 11VMV1826

TEN THOUSAND METRE
UNIVERSAL TRANSVERSE MERCATOR GRID
ZONE 11

TOPOGRAPHICAL SURVEY DIRECTORATE
SERVICE TOPOGRAPHIQUE

DATE 18 Aug 76

Q.C. APPROVES RELEASE
C.Q. APPROUVE



WILLOW LAKE
85 L
EDITION 3

Reprints

85-L