

This document was produced
by scanning the original publication.

85 K

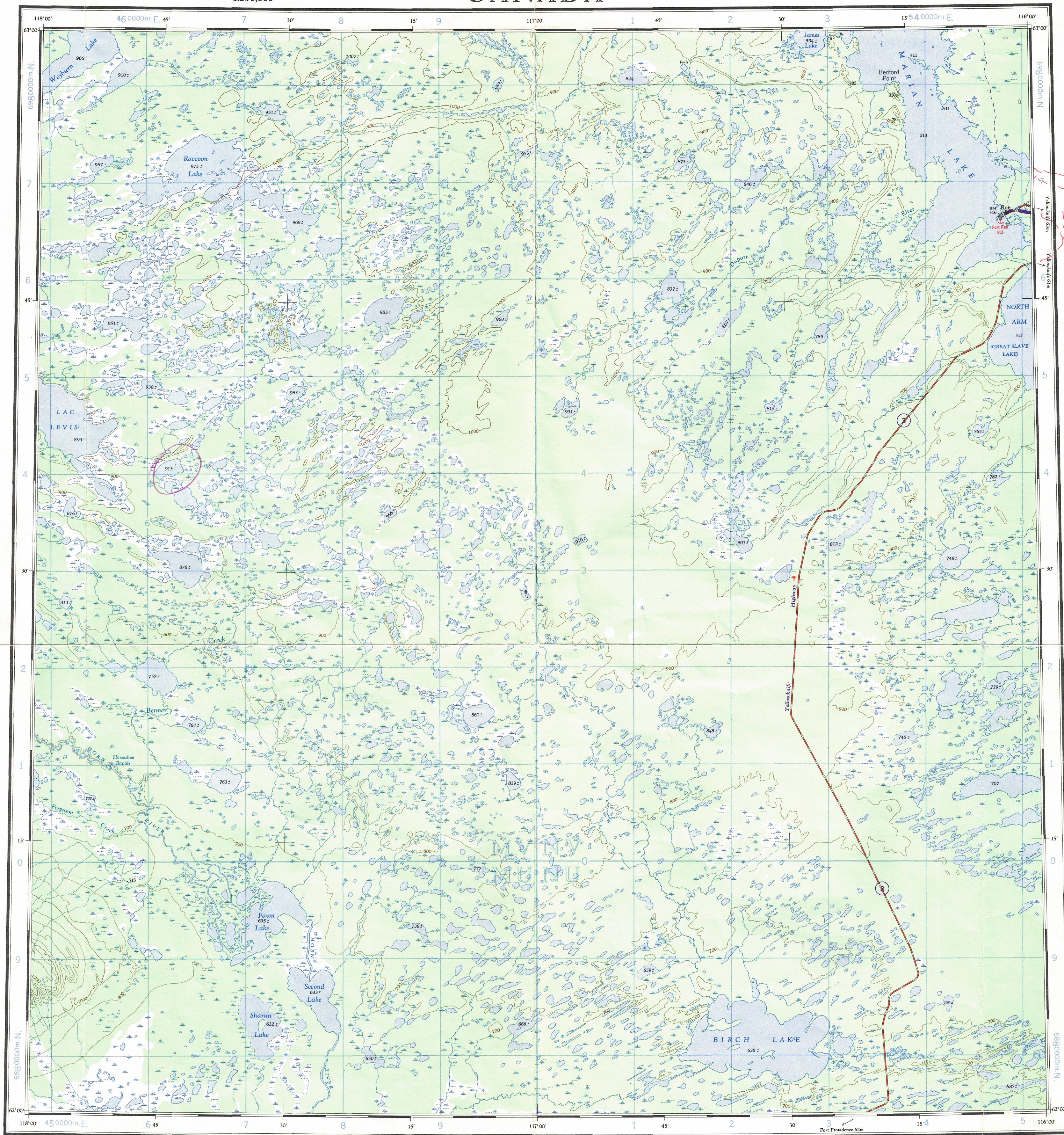
1:250,000

CANADA

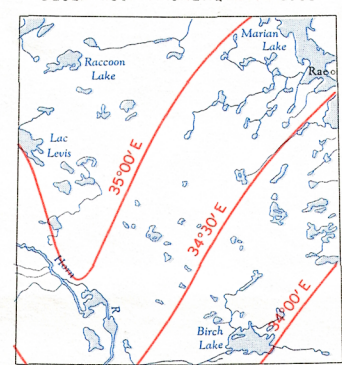
EDITION 2 (1967)

85 K

Refer to
this map as:
EDITION 2 MCE
SERIES A 502
(1967)



THE DECLINATION OF THE COMPASS NEEDLE 1961
DECLINAISON MAGNETIQUE EN 1961



The declination of the compass needle is decreasing
6.1 minutes annually.
La déclinaison magnétique décroît de 6.1 minutes annuellement.

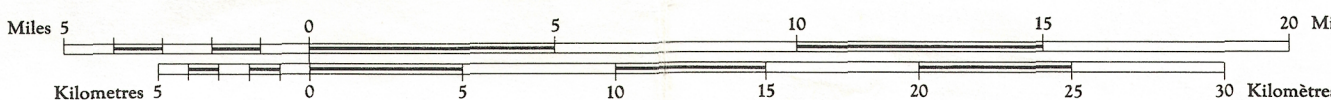
Interim corrections 1967.

Roads:
loose or stabilized surface, all weather...
trail...
Routes:
loose surface, all weather...
cart track, trail...
Spot elevation: precise, approximate...
Boundary monument...
Pingo...
Depression contours...
Cliff or low relief...
Esker...

Roads:
loose surface, all weather...
cart track, trail...
Spot elevation: precise, approximate...
Boundary monument...
Pingo...
Depression contours...
Cliff or low relief...
Esker...

Produced by the ARMY SURVEY ESTABLISHMENT
R.C.E. 1958-61. Aerial photography 1953.
Copies may be obtained from the Map Distribution Office,
Department of Mines and Technical Surveys, Ottawa.

RAE
DISTRICT OF MACKENZIE
NORTHWEST TERRITORIES
Scale 1:250,000 Échelle



Transverse Mercator Projection
North American Datum 1927 (1953)
Contour Interval 100 feet
Elevations in feet above Mean Sea Level

Projection transverse de Mercator
Réseau géodésique nord-américain unifié 1927 (1953)
Équidistance des courbes: 100 pieds
Élévations en pieds au-dessus du niveau moyen de la mer

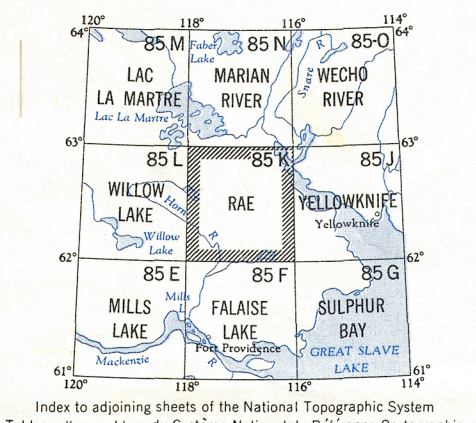
Préparé par le SERVICE TOPOGRAPHIQUE DE L'ARMÉE,
(G.R.C.) 1958-61. Photographie aérienne 1953.
Ces cartes sont en vente au Bureau de distribution des cartes,
ministère des Mines et des Relevés techniques, Ottawa.

Corrections provisoires 1967.

Building...
Post office...
Church...
School...
Astronomical monument...
R.C.M.P. Detachment...
Horizontal control point...
Seaplane anchorage...
Intermittent stream...
Intermittent lake...
Rapid; falls...
Marsh or swamp...
String bogs...
Icefield or Glacier...
Tundra Polygons...
Landing ground...

| GRID ZONE DESIGNATION | 100,000 M. SQUARE IDENTIFICATION |
|---|----------------------------------|
| 11V | MVNU 50 |
| TO GIVE A REFERENCE TO NEAREST 1000 METRES | |
| EXAMPLE: CHURCH | |
| SQUARE: Read letters of 100,000 m. square N V | |
| EASTING: Read number on grid line immediately to left of point | |
| Estimate tenths of a square from this line eastward to point. | |
| NORTHING: Read number on grid line immediately below point | |
| Estimate tenths of a square from this line northward to point. | |
| MILITARY GRID REFERENCE (to nearest 1,000 metres) N V 48 66 | |
| If reporting beyond 10° in any direction, prefix Grid Zone Designation as 11 V NV 48 66 | |

TEN THOUSAND METRE
UNIVERSAL TRANSVERSE MERCATOR GRID
ZONE 11



RAE
85 K
EDITION 2 (1967)

REPRINT
Nov 28-72

85-K