

Ce document est le produit d'une numérisation par balayage de la publication originale.  
This document was produced by scanning the original publication.

NATIONAL TOPOGRAPHIC SYSTEM

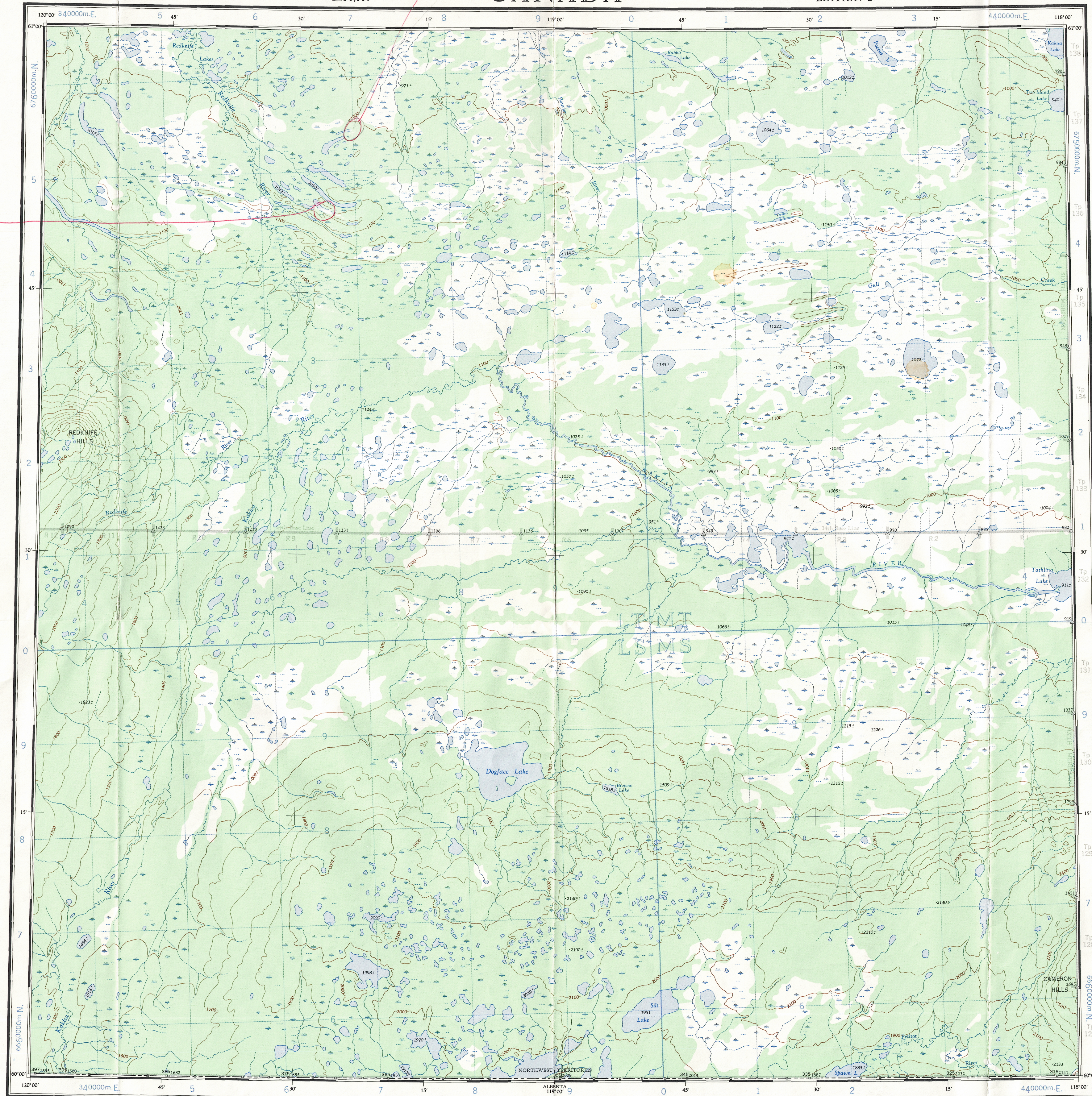
1:250,000

CANADA

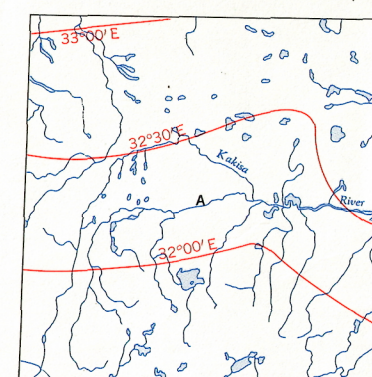
EDITION 2

85 D

Refer to  
this map as:  
850  
EDITION 2 ASE  
SERIES A 502



THE DECLINATION OF THE COMPASS NEEDLE, 1960.



The declination of the compass needle at any place along a red line is the declination given on that red line. At other places the declination is between those given on the neighbouring red lines; thus at the place marked A, the declination is between 10°00' E. and 10°30' E. The declination of the compass needle is decreasing 0.3 minutes annually.

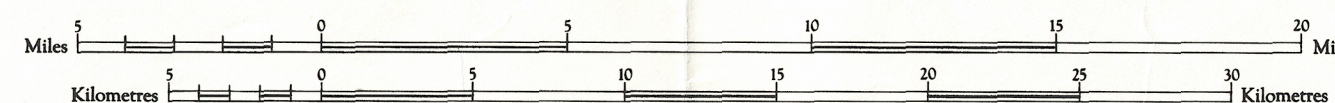
Produced by the ARMY SURVEY ESTABLISHMENT R.C.E. 1957-60  
Aerial photography 1950.

- Roads:  
hoose surface, all weather .....  
dry weather .....  
cart track or winter road .....  
trail or portage .....
- Boundaries:  
provincial, with monument .....  
district .....  
township .....  
park, reserve, etc. ....
- Power line; Telephone line .....  
Horizontal control point, with elevation .....  
Adriatic monument .....  
Bench mark, with elevation .....  
Spot elevation, precise, approximate .....  
Sand or gravel pit .....

## KAKISA RIVER

DISTRICT OF MACKENZIE  
NORTHWEST TERRITORIES

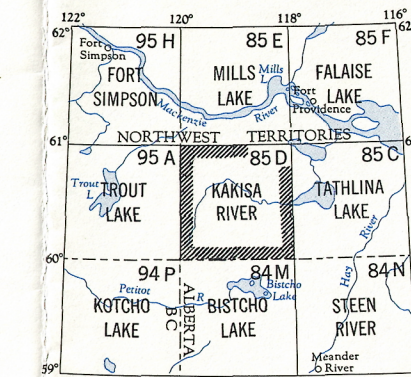
Scale 1:250,000



Copies may be obtained from the  
Map Distribution Office,  
Dept. of Mines and Technical Surveys,  
Ottawa.

Contour Interval 100 Feet  
Elevations in Feet above Mean Sea Level  
Transverse Mercator Projection  
North American Datum 1927  
Preliminary 1952

- House; Building .....  
Post Office; School; Church .....  
Radio Station .....  
R.C.M.P. Detachment; Tower .....  
C.M. or low relief .....  
Esker; Pingo .....  
Swamp or marsh .....  
Intermittent lake, stream .....  
Indefinite lake, stream .....  
Rapids, large, small; Bridge .....  
Icefield or Glacier .....  
Dry river bed .....  
Contours:  
elevation .....  
depression .....  
Wooded area .....



KAKISA RIVER  
85 D  
EDITION 2

100,000 M. SQUARE IDENTIFICATION	
GRID ZONE DESIGNATION	11V
TO GIVE A REFERENCE TO NEAREST 1000 METRES	
EXAMPLE: STREAM JUNCTION	
SQUARE: Read letters of 100,000 m. square	L T
EASTING: Read number on grid line immediately to left of point	8
Estimate tenths of a square from this line westward to point	1
NORTHING: Read number on grid line immediately below point	2
Estimate tenths of a square from this line northward to point	2
MILITARY GRID REFERENCE (to nearest 1,000 metres) L T 8122	
If reporting beyond 10° in any direction, prefix Grid Zone Designation as 11VLT8122	

TEN THOUSAND METRE  
UNIVERSAL TRANSVERSE MERCATOR GRID  
ZONE 11

85-11  
Edition # 3  
TO Ramsay For Reprints  
5-01-86

85-D  
Reprinted  
Oct 75