

Ce document est le produit d'une numérisation par balayage de la publication originale.
This document was produced by scanning the original publication.

NATIONAL TOPOGRAPHIC SYSTEM

1:250,000

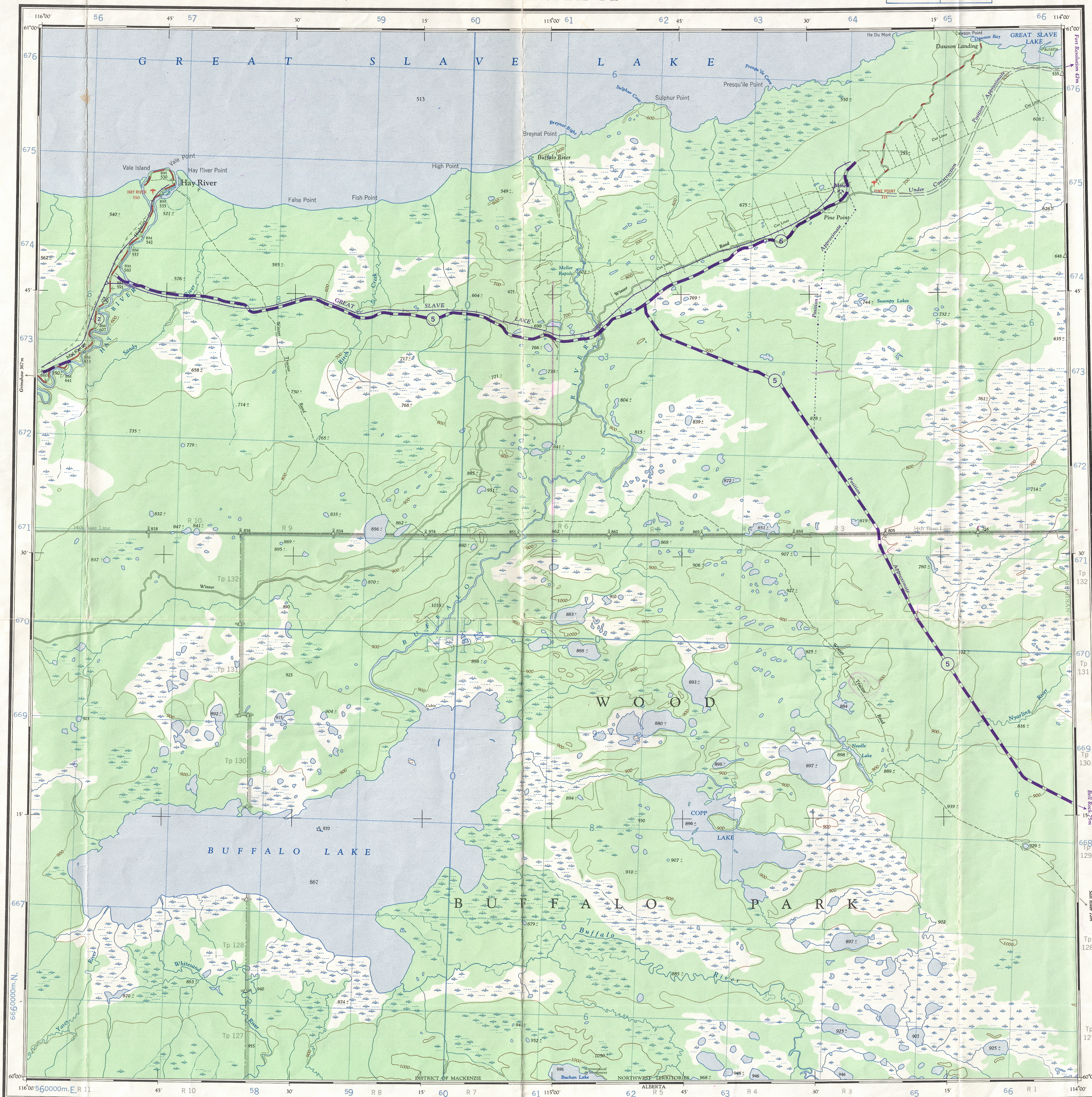
CANADA

SECOND EDITION

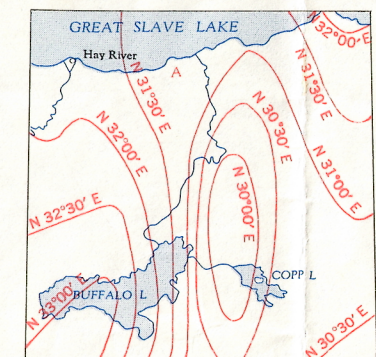
Refer to this map as: 85B EDITION 2 MCE SERIES A 502 (1967)

SHEET 85 B

Refer to this map as: 85B EDITION 2 MCE SERIES A 502 (1967)



DECLINATION OF THE COMPASS NEEDLE, 1958



The declination of the compass needle at any place along a red line is the declination given on that red line. At other places the declination is between those given on the neighboring red lines that at the place marked A, the declination is between N 1° 10' E and N 1° 30' E. The yearly declinations of the compass needle are decreasing 7.5 minutes annually.

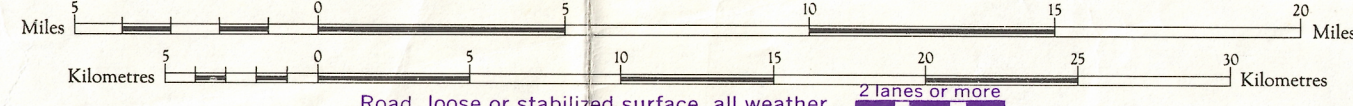
Surveyed by the DEPARTMENT OF MINES AND TECHNICAL SURVEYS, and by the ARMY SURVEY ESTABLISHMENT, R.C.E. Compiled, drawn, and printed by the A.S.E. 1956-59. Interim corrections 1967.

REFERENCE	
Road, Hard Surface, All Weather	More than 2 Lanes Wide
" " " " " "	2 Lanes
" " " " " "	Less than 2 Lanes
Loose Surface, All Weather	2 Lanes Wide or More
" " " " " "	Less than 2 Lanes
Canal, Tied, Trail	Canal
Railway, Multiple Track	Single Track
Boundary, International	Boundary
" " " " " "	Province or State
" " " " " "	County or District
" " " " " "	Reservation, Indian, Military, etc.

BUFFALO LAKE

DISTRICT OF MACKENZIE
NORTHWEST TERRITORIES
WEST OF FIFTH MERIDIAN

Scale 1: 250,000
1 Inch to 4 Miles approximately.

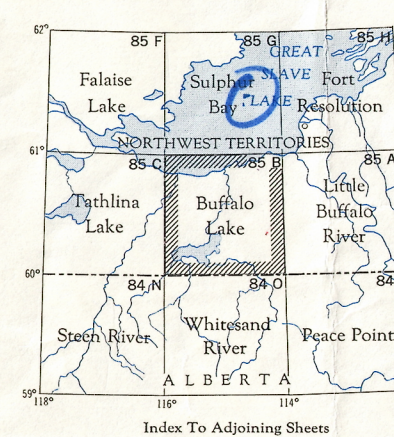


Power transmission line
Cables may be obtained from
The Map Distribution Office,
Dept. of Mines and Technical Surveys,
Ottawa.

Contour Interval 100 Feet
Elevations in Feet above Mean Sea Level.
Transverse Mercator Projection
North American Datum 1927
Preliminary 1953

REFERENCE

House, School	Horizontal Control Point
Settlement, Town	Spot Elevation, in feet
Contours, Elevation	Forest, unclassified
" " " " " "	Depression
" " " " " "	Sump or Marsh
" " " " " "	Aggravation
Dry River Bed	W. L. 125
Stream, Intermittent	Ferry
Dam	Lighthouse
Falls	Mail
Airfield, on Land	Water
" " " " " "	Landing Ground
Telephone Line	Anchor



TOPOGRAPHICAL SURVEY DIVISION
SERIAL TOPOG-AP-1000
C. Q. APPROVES RELEASE
C. Q. APPROVE

BUFFALO LAKE
SHEET 85 B
EDITION 2 (1967)

Reprint.