

This document was produced
by scanning the original publication.

83 N

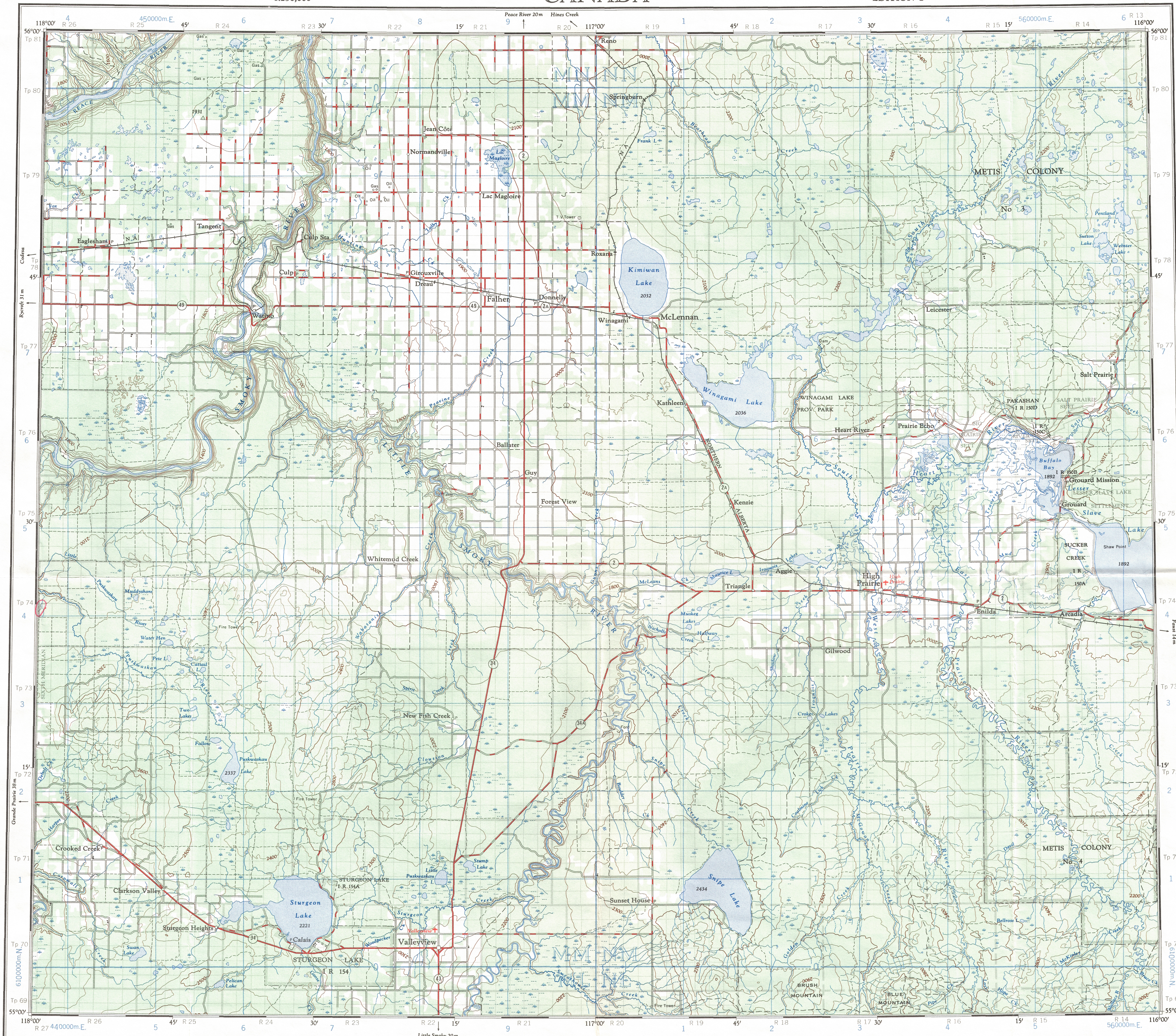
1:250,000

CANADA

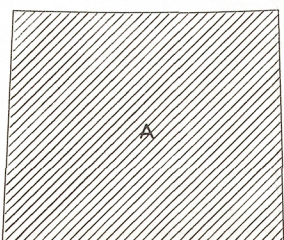
EDITION 2

83 N

Refer to
this map as:
83 N
EDITION 2 ASE
SERIES A 502



RELIABILITY DIAGRAM - CROQUIS D'EXACTITUDE



A - Large scale maps, photogrammetric 1952-1962.
A - Cartes à grande échelle (photogrammétrie: 1952-1962)

Compiled 1963, by the SURVEYS AND MAPPING BRANCH,
DEPARTMENT OF MINES AND TECHNICAL SURVEYS.
Printed 1964.
Magnetic declination 1965 varies from 26°30' easterly at
centre of west edge to 25°01' easterly at centre of east
edge. Mean annual change, 4.2' westerly.

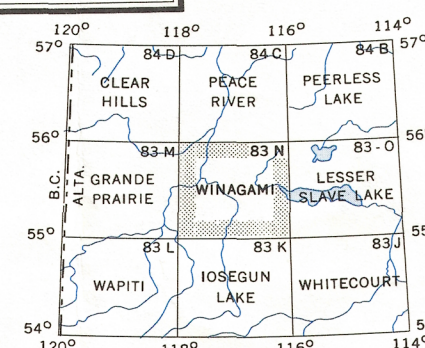
Road
hard surface, all weather, paved, toute saison.
loose surface, all weather, de gravier, toute saison.
wagon, cart track, chemin de terre.
Railway, normal gauge.
Depression contours.
Spot Elevation in feet.
Power transmission line.

Scale 1:250,000 Échelle
Kilometres 5 10 15 20 25 30
Miles 5 10 15 20 25 30

WINAGAMI
ALBERTA

Rédigée en 1963 par la DIRECTION DES LEVES ET DE LA
CARTOGRAPHIE, MINISTÈRE DES MINES ET DES RELEVÉS
TECHNIQUES. Imprimée en 1964.
La déclinaison magnétique pour 1965 varie de 26°30' Est au
centre de la limite Ouest à 25°01' Est au centre de la limite
Est. Variation moyenne annuelle: 4.2' Ouest.

Town.
Village or Settlement.
Post Office.
Church.
School.
Boundary monument.
Horizontal control point.



Q.C. APPROVES RELEASE
C.Q. APPROUVE

NOV 23 1981

WINAGAMI
83 N