

This document was produced
numérisation par balayage
de la publication originale.

83 J

1:250,000

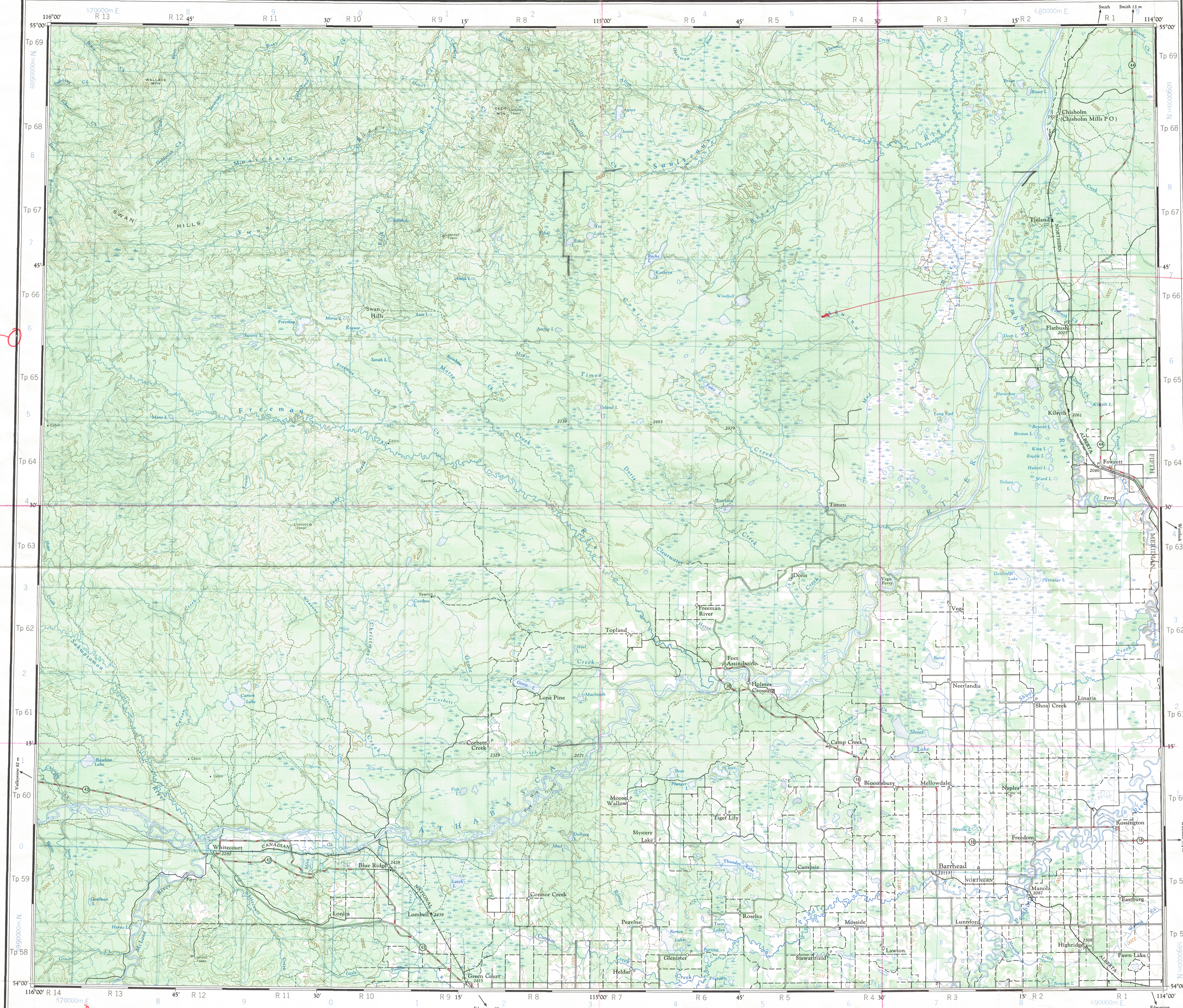
CANADA

EDITION 1

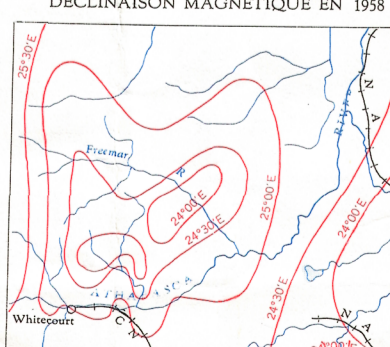
83 J

Military users:
refer to this map as:
Référence de la carte
pour usage militaire:

SERIES A502
MAP 83 J
EDITION 1 MCE ÉDITION



THE DECLINATION OF THE COMPASS NEEDLE 1958
DÉCLINAISON MAGNÉTIQUE EN 1958



The declination of the compass needle is decreasing
5.3 minutes annually.
La déclinaison magnétique décroît de 5.3 minutes annuellement

Compiled by the SURVEYS AND MAPPING BRANCH,
DEPARTMENT OF MINES AND TECHNICAL SURVEYS,
1960 from large scale maps. Printed 1961.
Copies may be obtained from the Canada Map Office,
Department of Energy, Mines and Resources, Ottawa,
or your nearest map dealer.

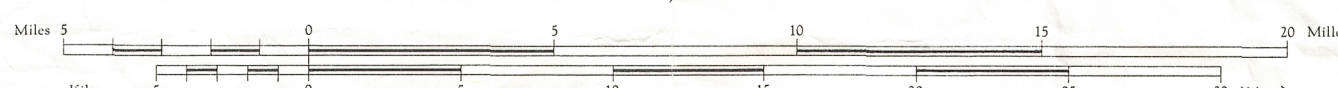
© Canada Copyrights Reserved 1973

Road	Route	more than 2 lanes	2 lanes	less than 2 lanes
hard surface, all weather	pavé, toute saison	more than 2 lanes	2 lanes	less than 2 lanes
loose surface, all weather	de gravier, toute saison	more than 2 lanes	2 lanes	less than 2 lanes
wagon, cart track	chemin de terre	more than 2 lanes	2 lanes	less than 2 lanes
trail or portage	sentier ou portage	more than 2 lanes	2 lanes	less than 2 lanes
single track	single track	more than 2 lanes	2 lanes	less than 2 lanes
double track	double track	more than 2 lanes	2 lanes	less than 2 lanes
single track	single track	more than 2 lanes	2 lanes	less than 2 lanes
double track	double track	more than 2 lanes	2 lanes	less than 2 lanes
spot elevation, in feet	Reperes de nivellement en pieds	more than 2 lanes	2 lanes	less than 2 lanes
Power transmission line	Ligne de transport d'énergie	more than 2 lanes	2 lanes	less than 2 lanes

WHITECOURT ALBERTA

WEST OF FIFTH MERIDIAN - OUEST DU CINQUIÈME MÉRIDIEN

Scale 1:250,000 Echelle



Transverse Mercator Projection
North American Datum 1927
Contour interval 100 feet
Elevations in feet above Mean Sea Level

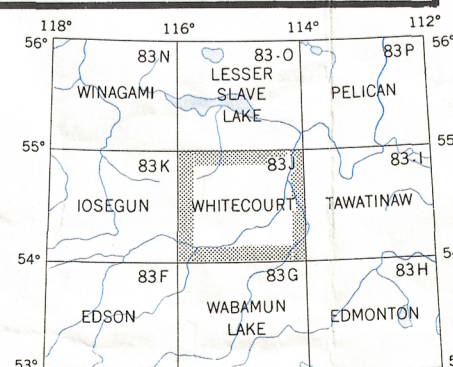
Projection Transverse de Mercator
Réseau géodésique nord-américain unifié 1927
Euidistance des courbes: 100 pieds
Elevations en pieds au-dessus du niveau moyen de la mer

Compilée par la DIRECTION DES LÈVÉS ET DE LA CARTOGRAPHIE,
MINISTÈRE DES MINES ET DES RELEVÉS TECHNIQUES, en 1960
d'après cartes à large échelle. Imprimée en 1961.

Ces cartes sont en vente au Bureau des Cartes du Canada,
ministère de l'Énergie, des Mines et des Ressources, Ottawa,
ou chez le vendeur le plus près.

© Canada 1973, tous droits réservés

Town	Ville	□	Stream	Cours d'eau
Village or Settlement	Village ou hameau	□	intermittent or dry	intermittent ou à sec
Post office	Bureau de poste	P	Rapids; falls	Rapides; chutes
Church	Eglise	+	Marsh or swamp	Marais ou marécage
School	École	+	Lighthouse	Phare
Boundary monument	Borne frontalière	+	Airport	Aéroport
Horizontal control point	Point géodésique	+	Seaplane base	Base d'hélicoptère



Index to adjoining sheets of National
Topographic System
Tableau d'assemblage du Système de
Référence Cartographique National

TOPOGRAPHICAL SURVEY DIRECTORATE
SERVICE TOPOGRAPHIQUE
DATE 28-06-88
Q.C. APPROVES RELEASE
C.O. APPROUVE

GRID ZONE
DESIGNATION
11U

100,000 M. SQUARE IDENTIFICATION
N L PL
N K P R
60

TO GIVE A REFERENCE TO NEAREST 1000 METRES
EXAMPLE: SCHOOL
SQUARE: Read letters of 100,000 m. square PL
EASTING: Read number on grid line
immediately to left of point
Estimate tenths of a square from
this line eastward to point.
NORTHING: Read number on grid line
immediately below point
Estimate tenths of a square from
this line northward to point.
MILITARY GRID REFERENCE
(to nearest 1,000 metres) PL3425
If reporting beyond 18° in any direction,
prefix Grid Zone Designation as: 11U PL3425

TEN THOUSAND METRE
UNIVERSAL TRANSVERSE MERCATOR GRID
ZONE 11

WHITECOURT
83J
EDITION 1
REPRINT

83-J