

This document was produced
numération par balayage
de la publication originale.

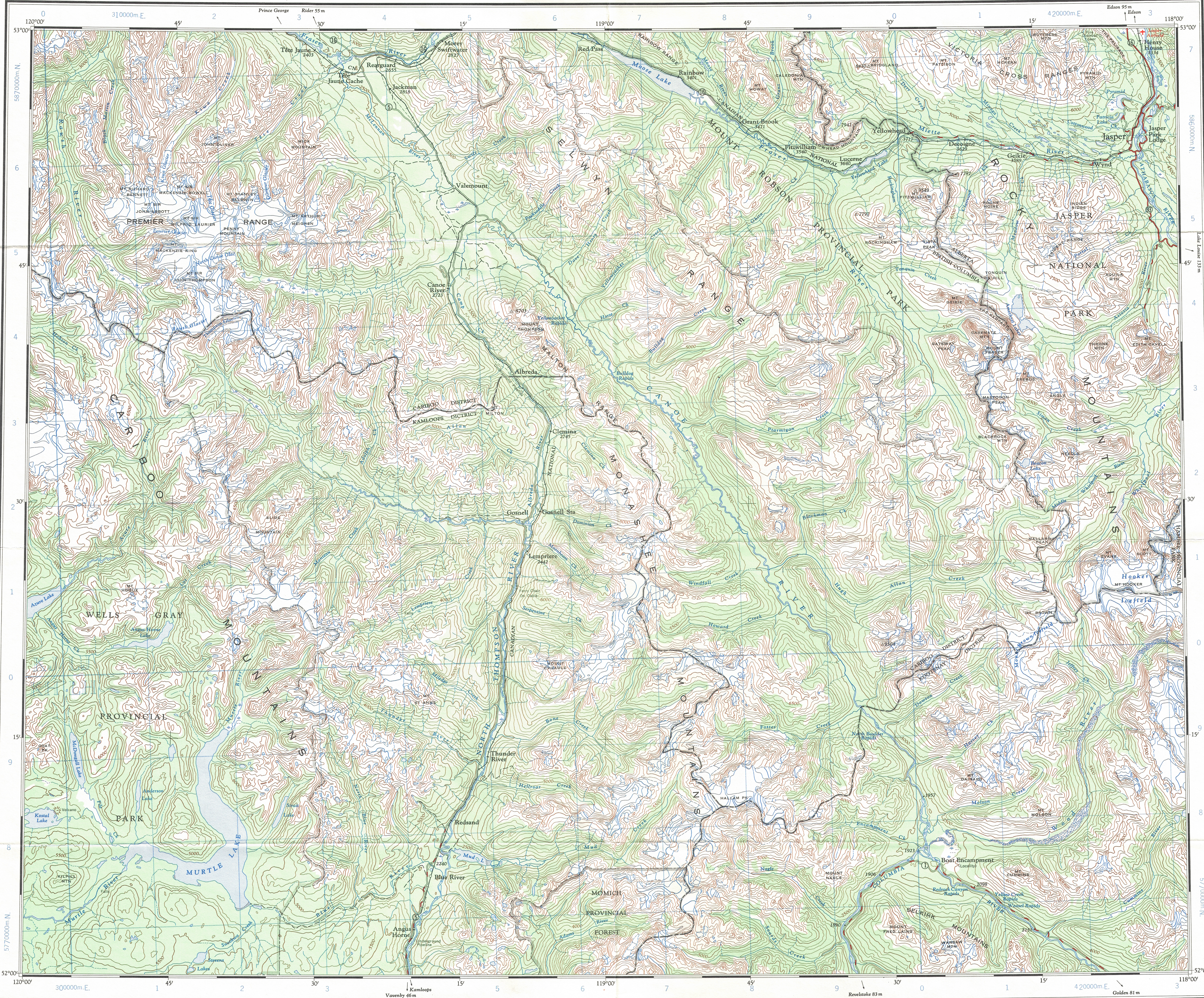
83D

1:250,000

CANADA

EDITION 1

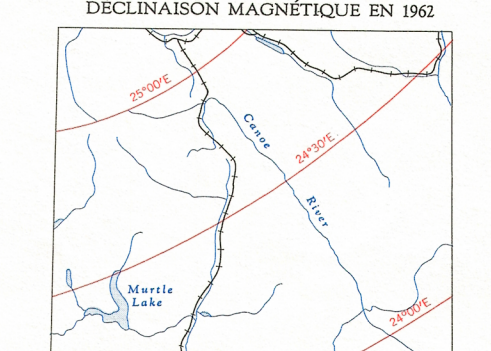
83D



Refer to
this map as:

83D
EDITION 1 ASE
SERIES A 502

THE DECLINATION OF THE COMPASS NEEDLE 1962



The declination of the compass needle is decreasing
3.5 minutes annually.
La déclinaison magnétique décroît de
3.5 minutes annuellement

Compiled, 1958-61, by the SURVEYS AND MAPPING BRANCH,
DEPARTMENT OF MINES AND TECHNICAL SURVEYS,
from air photographs taken in 1951, 1955 and large scale maps.
Field surveys 1955 and 1957. Printed 1963.

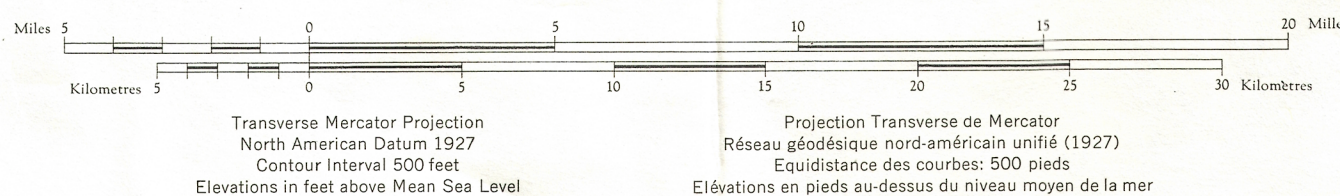
Copies may be obtained from the Map Distribution
Office, Department of Mines and Technical Surveys,
Ottawa.

Road
hard surface, all weather ... pavé, toute saison
loose surface, all weather ... de gravier, toute saison
wagon, cart track ... chemin de terre
Railway, normal gauge ... chemin de fer, écartement normal
Depression contours ... Courbes de cuvette
Spot elevation, in feet ... Repère de nivellement en pieds
Power transmission line ... Ligne de transport d'énergie

CANOE RIVER

BRITISH COLUMBIA - ALBERTA

Scale 1:250,000 Échelle



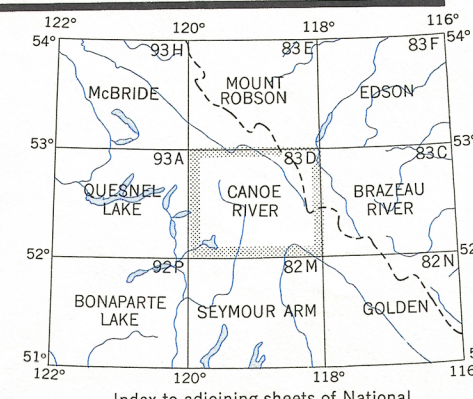
Transverse Mercator Projection
North American Datum 1927
Contour Interval 500 feet
Elevations in feet above Mean Sea Level

Projection Transverse de Mercator
Réseau géodésique nord-américain unifié (1927)
Équidistance des courbes: 500 pieds
Élévations en pieds au-dessus du niveau moyen de la mer

Rédigée en 1958-61, par la DIRECTION DES LEVÉS ET DE
LA CARTOGRAPHIE, MINISTÈRE DES MINES ET DES RE-
LEVÉS TECHNIQUES, d'après les photographies aériennes prises
en 1951, 1955 et les cartes à large échelle. Travaux exécutés sur
le terrain en 1956 et 1957. Imprimée en 1963.

Ces cartes sont en vente au Bureau de distribution des
cartes, ministère des Mines et des Relevés techniques,
Ottawa.

Town ... Village ou hameau
Post office ... Bureau de poste
Church ... Église
School ... École
Boundary monument ... borne frontalière
Horizontal control point ... Point géodésique
Stream ... Cours d'eau
Intermittent or dry ... Lac Intermittent ou à sec
Rapid, falls ... Rapides; chutes
Marsh or swamp ... Marais ou marécage
Lighthouse ... Phare
Airport ... Aéroport
Seaplane base ... Base d'hydravions



Index to adjoining sheets of National
Topographic System
Tableau d'assemblage du Système
National de référence cartographique

GRID ZONE
DESIGNATION
11U

TO GIVE A REFERENCE TO NEAREST 1000 METRES
EXAMPLE: STREAM JUNCTION
SQUARE: Read letters of 100,000 m. square
EASTING: Read number on grid line
immediately to left of point
Estimate tenths of a square from
this line westward to point
NORTHING: Read number on grid line
immediately below point
Estimate tenths of a square from
this line northward to point
MILITARY GRID REFERENCE
No nearest 1,000 metres: L4848
If reporting beyond 10° in any direction,
prefix Grid Zone Designation as 11UL4848

TEN THOUSAND METRE
UNIVERSAL TRANSVERSE MERCATOR GRID
ZONE 11

CANOE RIVER
83D
EDITION 1 ASE