

This document was produced
by scanning the original publication.
Ce document est le produit d'une
numérisation par balayage
de la publication originale.



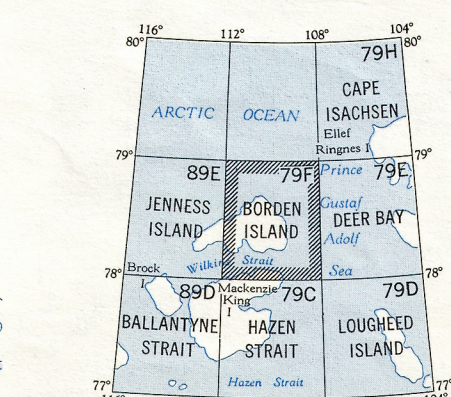
Refer to
this map as:
79F
EDITION 1 ASE
SERIES A 502

100,000 M. SQUARE IDENTIFICATION	
GRID ZONE DESIGNATION	12X
EXAMPLE:	VCWC VBWB 5
TO GIVE A REFERENCE TO NEAREST 1000 METRES	
EXAMPLE: LAKE	
SQUARE: Read letters of 100,000 m. square immediately to left of point	WC
Estimate tenths of a square from this line eastward to point	3
NORTHING: Read number on grid line immediately below point	7
Estimate tenths of a square from this line northward to point	37
MILITARY GRID REFERENCE (in metres 1:50,000)	WC3709
If reporting beyond 18° in any direction, prefix Grid Zone Designation as: 12XWC3709	

TEN THOUSAND METRE
UNIVERSAL TRANSVERSE MERCATOR GRID
ZONE 12

TOPOGRAPHICAL SURVEY DIRECTORATE
SERVICE TOPOGRAPHIQUE

DATE
Q.C. APPROVES RELEASE
C.Q. APPROUVE



COMPILATION DIAGRAM - SOURCES UTILISÉES

A- Compiled photogrammetrically from 1959-60 aerial photography.
A- Établie par procédés photogrammétriques à partir de photographies aériennes, de 1959-60.

Produced by the ARMY SURVEY ESTABLISHMENT, R.C.E.
Information depicted current as of 1963. Printed 1965.
The daily change of the North Magnetic Pole renders the magnetic compass useless in this area.
1964 Magnetic declination for this map varies from 114°40' easterly at the centre of the west edge to 148°40' easterly at the centre of the east edge.

Roads: loose surface de gravier
cart track, trail de terre, sentier
Spot elevation, precise, approximate Point coté, précis, approximatif 950, 950+
Boundary monument Borne-frontière
Pingo Buttes de terre
Depression contours Courbes de cuvette
Cliff or low relief Falaises ou relief peu accentué
Esker Esker

Scale 1:250,000 Échelle

Miles 5 0 5 10 15 20 Miles
Kilometres 5 0 5 10 15 20 25 30 Kilomètres

Transverse Mercator Projection
North American Datum 1927
Contour interval 100 feet
Elevations in feet above Mean Sea Level

Projection transverse de Mercator
Réseau géodésique nord-américain unifié 1927
Équidistance des courbes 100 pieds
Élévations en pieds au-dessus du niveau moyen de la mer

Copies may be obtained from the Map Distribution Office,
Department of Mines and Technical Surveys, Ottawa.

Ces cartes sont en vente au Bureau de distribution des cartes,
ministère des Mines et des Relevés techniques, Ottawa.

Building Bâtiment
Post office Bureau de poste
Church Église
School École
Astronomical monument Repère astronomique
R.C.M.P. Detachment Poste de la G.R.C.
Horizontal control point Point géodésique
Lighthouse Phare

Intermittent stream Cours d'eau intermittent
Intermittent lake Lac intermittent
Rapids; falls Rapides; chute
Marsh or Swamp Marais ou marécage
String bogs Marais en chapelet
Icefield or Glacier Champ de glace ou glacier
Tundra polygons Sols polygonaux
Tundra ponds Lacs de toundra

REPRINT