

1008
23
17
90
1/4
ROGER
18

75 A

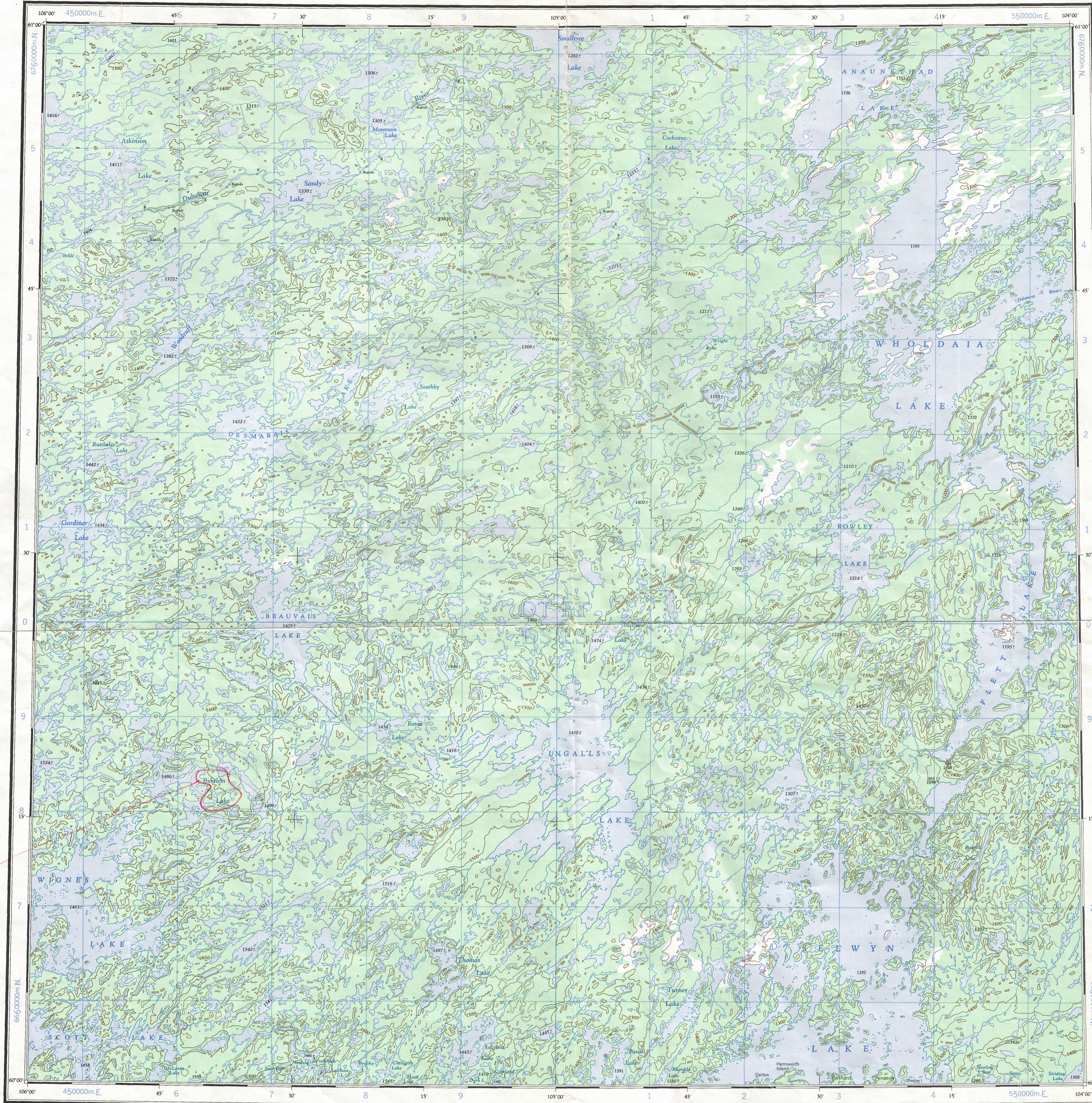
1:250,000

CANADA

EDITION 1

75 A

Refer to this map as:
75 A
EDITION 1 ASE
SERIES A 502



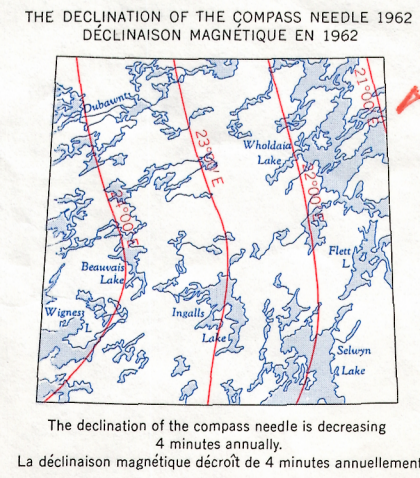
X NAME
15-12-87
714
CONTINUED
TO P. 1014

70 Y
DAREE

100,000 M. SQUARE IDENTIFICATION	
GRID ZONE DESIGNATION	13V
EXAMPLE: RAPIDS	ET 214
SQUARE: Read letters of 100,000 m. square immediately to left of point	ET
EASTING: Read number on grid line immediately to left of point	21
Estimate tenths of a square from this line eastward to point	4
NORTHING: Read number on grid line immediately below point	14
Estimate tenths of a square from this line northward to point	
MILITARY GRID REFERENCE (to nearest 1,000 metres)	ET214
If reporting beyond 18° in any direction, prefix Grid Zone Designation as 13VET2114	

TEN THOUSAND METRE
UNIVERSAL TRANSVERSE MERCATOR GRID
ZONE 13

TOPOGRAPHICAL SURVEY DIRECTORATE
SERVICE TOPOGRAPHIQUE
DATE 21-10-86
Q. C. APPROVES RELEASE
C. Q. APPROUVE

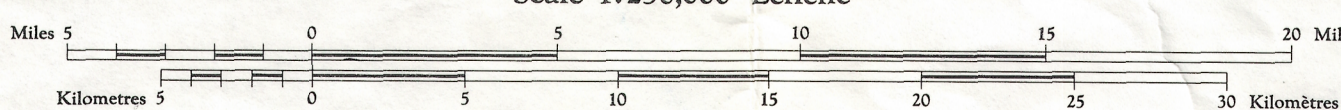


Produced by the ARMY SURVEY ESTABLISHMENT, R.C.E.
Information depicted current as of 1955.
Copies may be obtained from the Map Distribution Office,
Department of Mines and Technical Surveys, Ottawa.

WHOLDAIA LAKE

DISTRICT OF MACKENZIE
NORTHWEST TERRITORIES

Scale 1:250,000 Échelle



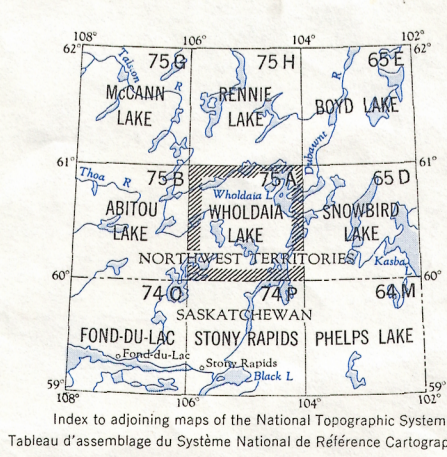
- Roads: loose surface, all weather... de gravier, toute saison...
cart track, trail... de terre, sentier...
Spot elevation: precise, approximate... Point coté, précis, approximatif...
Boundary monument... Bornes-frontière...
Pingo... Buttes de terre...
Depression contours... Courbes de cuvette...
Cliff or low relief... Falaise ou relief peu accentué...
Esker... Esker...

Transverse Mercator Projection
North American Datum 1927
Contour Interval 100 feet
Elevations in feet above Mean Sea Level

Projection transverse de Mercator
Réseau géodésique nord-américain unifié 1927
Équidistance des courbes: 100 pieds
Élévations en pieds au-dessus du niveau moyen de la mer

Publiée par le SERVICE TOPOGRAPHIQUE DE L'ARMÉE,
(G.R.C.). Renseignements à jour en 1955.
Ces cartes sont en vente au Bureau de distribution des cartes,
ministère des Mines et des Relevés techniques, Ottawa.

- Building... Bâtiment...
Post office... Bureau de poste...
Church... Église...
School... École...
Astronomical monument... Repère astronomique...
R.C.M.P. Detachment... Poste de la G.R.C...
Horizontal control point... Pointe géodésique...
Landing ground... Piste d'atterrissage...
Intermittent stream... Cours d'eau intermittent...
Intermittent Lake... Lac intermittent...
Rapids; falls... Rapides; chute...
Marsh or Swamp... Marais ou marécage...
String bogs... Marais en chapelet...
Icefield or Glacier... Champ de glace ou glacier...
Tundra polygons... Sols polygonaux...
Tundra ponds... Étangs de toundra...



WHOLDAIA LAKE
75 A
EDITION 1

REPRINT

75-A