

Ce document est le produit d'une
numérisation par balayage
de la publication originale.

66 L

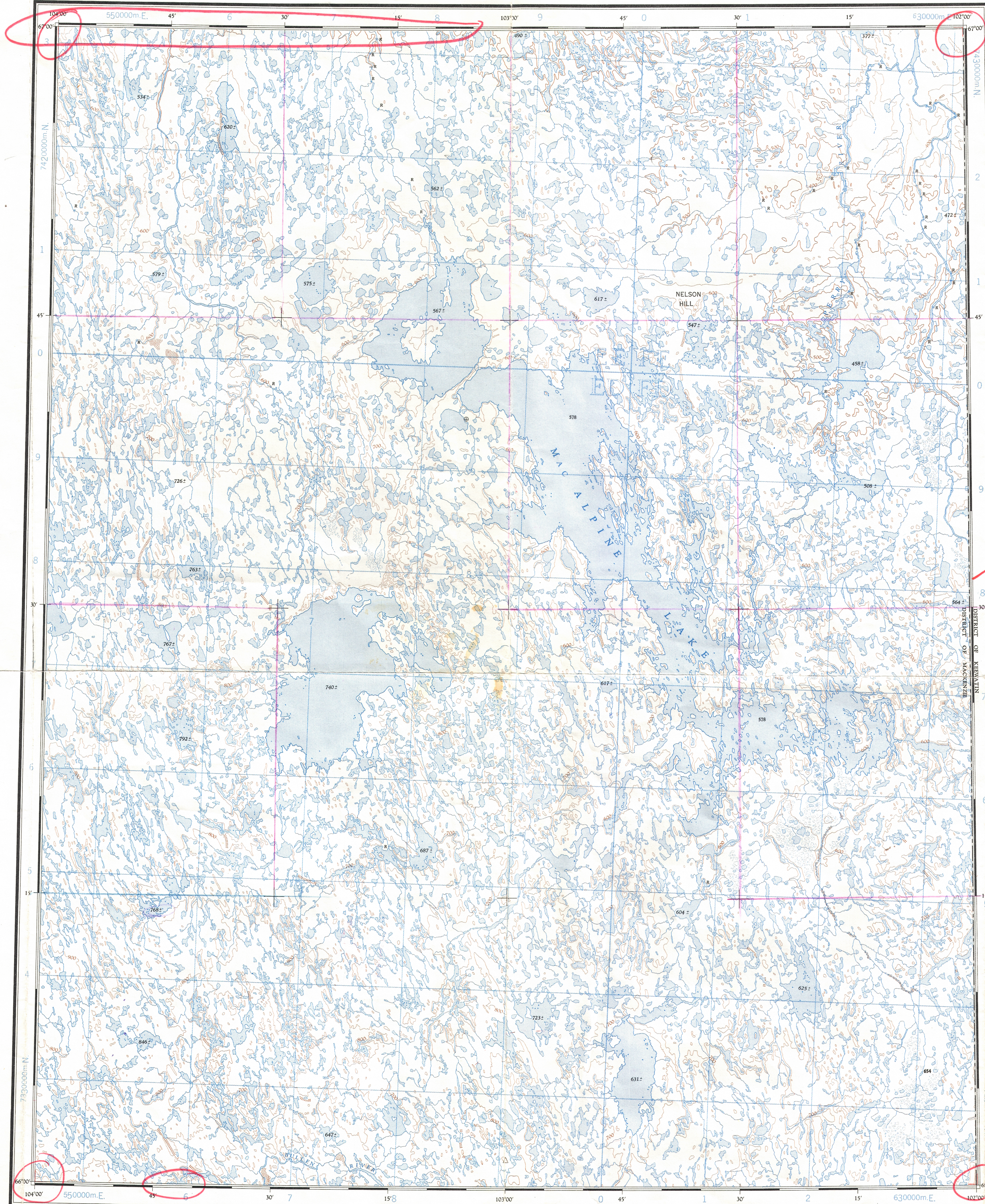
1:250,000

CANADA

EDITION 1

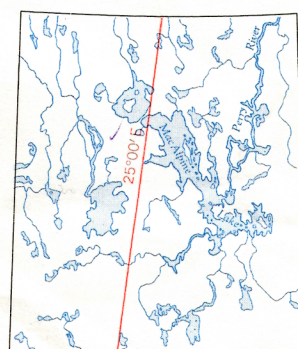
66 L

Refer to
this map as:
66 L
EDITION 1 ASE
SERIES A 502



*Neutral
Registration Poor.*

THE DECLINATION OF THE COMPASS NEEDLE 1963
DÉCLINAISON MAGNÉTIQUE EN 1963



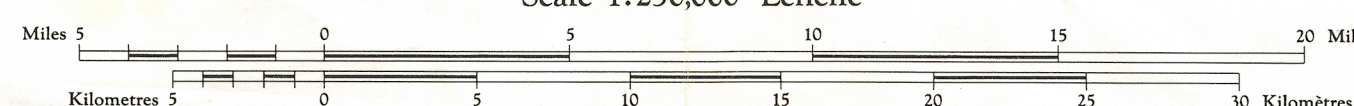
The declination of the compass needle is decreasing
7.0 minutes annually.
La déclinaison magnétique décroît de 7.0 minutes annuellement.

Produced by the ARMY SURVEY ESTABLISHMENT, R.C.E.
Information depicted current as of 1962. Printed 1964.
Copies may be obtained from the Map Distribution Office,
Department of Mines and Technical Surveys, Ottawa.

MACALPINE LAKE

DISTRICT OF MACKENZIE
NORTHWEST TERRITORIES

Scale 1:250,000 Échelle



Transverse Mercator Projection
North American Datum 1927
Contour Interval 100 feet
Elevations in feet above Mean Sea Level

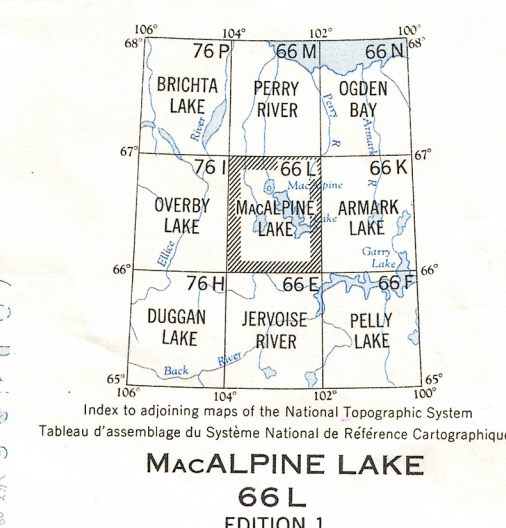
Projection transverse de Mercator
Réseau géodésique nord-américain unifié 1927
Équidistance des courbes: 100 pieds
Élévations en pieds au-dessus du niveau moyen de la mer

Produced by the SERVICE TOPOGRAPHIQUE DE L'ARMÉE,
(G.R.C.). Renseignements à jour en 1962. Imprimé en 1964.
Ces cartes sont en vente au Bureau de distribution des cartes,
ministère des Mines et des Relevés techniques, Ottawa.

Building Bâtiment Intermittent stream Cours d'eau intermittent
Post office Bureau de poste P Intermittent Lake Lac intermittent
Church Église Rapids falls Rapides chute
School École Marsh or Swamp Marais ou marécage
Astronomical monument Repère astronomique String bogs Marais en chalet
R.C.M.P. Detachment Poste de la G.R.C. Icefield or Glacier Champ de glace ou glacier
Horizontal control point Point géodésique Tundra polygons Sols polygonaux
Landing ground Piste d'atterrissage Tundra ponds Étangs de toundra

GRID ZONE DESIGNATION	
13 W	
100,000 M. SQUARE IDENTIFICATION	
ED	74
TO GIVE A REFERENCE TO NEAREST 1000 METRES	
EXAMPLE: ISLAND	
SQUARE: Read letters of 100,000 m. square	ED
EASTING: Read number on grid line immediately to left of point	7
Estimate tenths of a square from this line eastward to point	3
NORTHING: Read number on grid line immediately below point	7
Estimate tenths of a square from this line northward to point	6
MILITARY GRID REFERENCE (to nearest 1,000 metres)	ED7376
If reporting beyond 18° in any direction, prefix Grid Zone Designation as: 13WED7376	

TEN THOUSAND METRE
UNIVERSAL TRANSVERSE MERCATOR GRID
ZONE 13



D.M.P. S.P.C.
CARTOGRAPHY DIVISION
DIVISION DE LA CARTOGRAPHIE
DATE: 5/2/72
Q.C. APPROVES RELEASE
C.Q. APPROUVE

Reprint

66-L