

Ce document est le produit d'une
numérisation par balayage
de la publication originale.

66 B

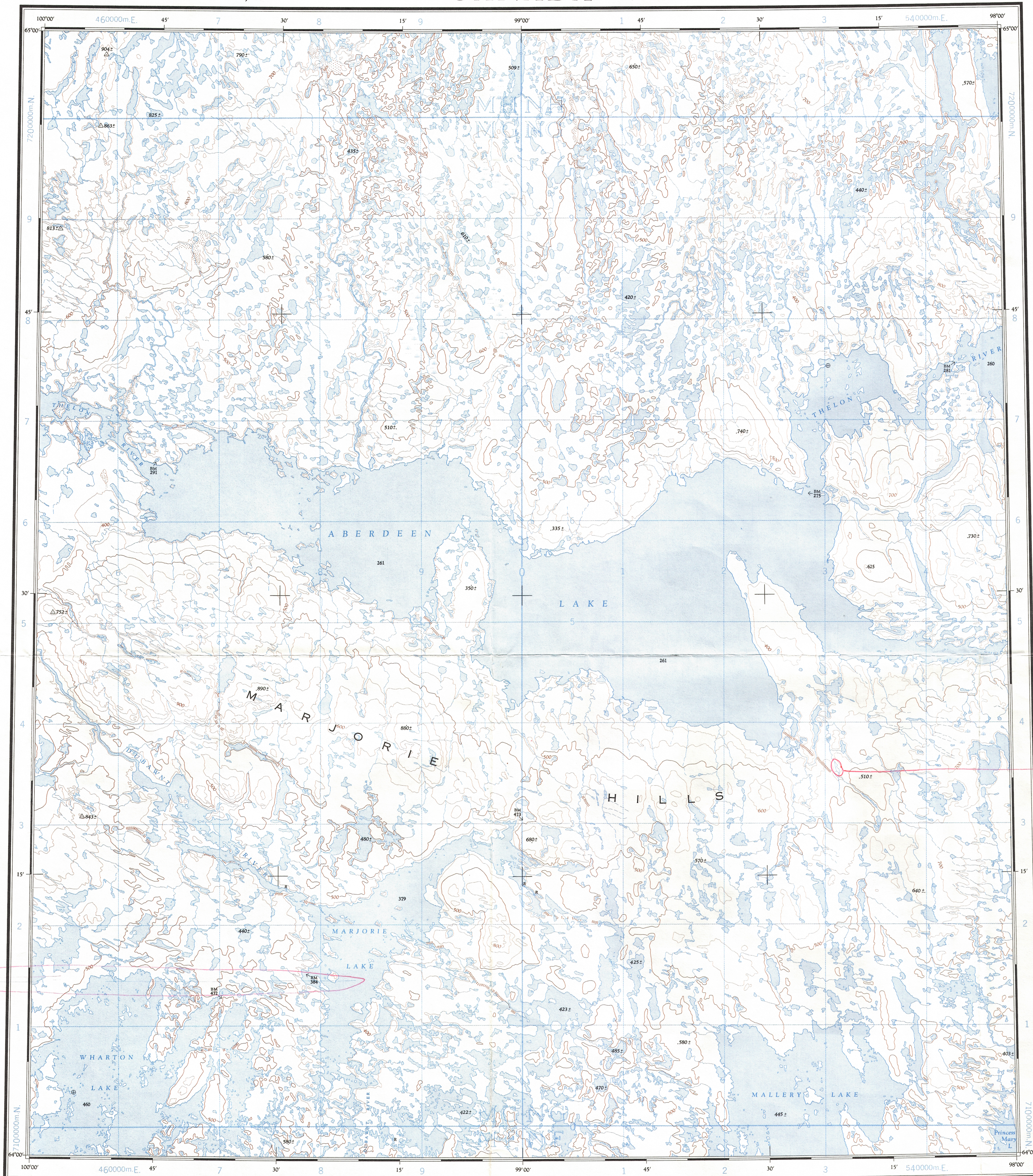
1:250,000

CANADA

EDITION 1

66 B

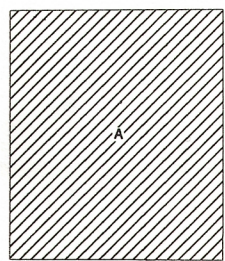
Refer to
this map as:
66 B
EDITION 1 ASE
SERIES A 502



K BLUE

SCREEN ?

COMPILED DIAGRAM—SOURCES UTILISÉES



A—Compiled photographically from 1955-56 aerial photography.
A—Établie par procédés photographiques à partir de photographies aériennes, de 1955-56.

Produced by the ARMY SURVEY ESTABLISHMENT, R.C.E.
Information depicted current as of 1961. Printed 1966.
The daily change of the North Magnetic Pole causes the magnetic
compass to be very erratic in this area.
1964 Magnetic declination for this map varies from 16°30' easterly
at the centre of the west edge to 9°20' easterly at the centre of the
east edge.

Roads: loose surface de gravier dry weather
cart track, trail de terre, sentier période sèche
Spot elevation: precise, approximate Point coté, précis, approximatif 950 - 950.2
Boundary monument Borne frontalière
Pingo Buttes de terre
Depression contours Courbes de cuvette
Cliff or low relief Falaise ou relief peu accentué
Escher Escher
Transverse Mercator Projection
North American Datum 1927
Contour Interval 100 feet
Elevations in feet above Mean Sea Level

Miles 5 10 15 20
Kilometres 5 10 15 20 25 30

Transverse Mercator Projection
North American Datum 1927
Contour Interval 100 feet
Elevations in feet above Mean Sea Level
Copies may be obtained from the Map Distribution Office,
Department of Mines and Technical Surveys, Ottawa.

ABERDEEN LAKE

DISTRICT OF KEEWATIN
NORTHWEST TERRITORIES

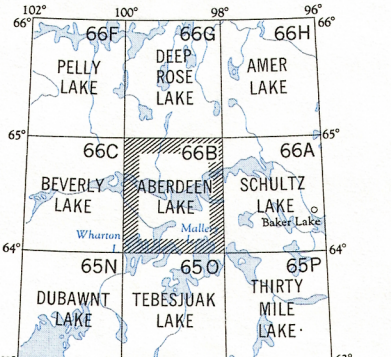
Scale 1:250,000 Échelle

Publié par le SERVICE TOPOGRAPHIQUE DE L'ARMÉE,
(G.R.C.) Renseignements à jour en 1961. Imprimé en 1966.
La variation diurne du pôle Nord magnétique affaiblit le compas magnétique
dans cette région.
La déclinaison magnétique (1964) varie de 16°30' vers l'est au centre
de la bordure ouest de la feuille à 9°20' vers l'est au centre de la
bordure est.

Building Bâtiment Intermittent stream Cours d'eau intermittent
Post office Bureau de poste P Intermittent lake Lac intermittent
Church Église Rapids; falls Rapides; chute
School École Marsh or Swamp Marais ou marécage
Astronomical monument Repère astronomique String bog Marais en chapelet
R.C.M.P. Detachment Poste de la G.R.C. Icefield or Glacier Champ de glace ou glacier
Horizontal control point Point géodésique Tundra polygons Sols polygonaux
Lighthouse Phare Tundra ponds Étangs de toundra

100,000 M. SQUARE IDENTIFICATION
GRID ZONE DESIGNATION
14W
TO GIVE A REFERENCE TO NEAREST 1000 METRES
EXAMPLE: POINT
SQUARE: Read letters of 100,000 m. square MG
EASTING: Read number on grid line
immediately to left of point
Estimate tenths of a square from
this line eastward to point.
NORTHING: Read number on grid line
immediately below point.
Estimate tenths of a square from
this line northward to point.
MILITARY GRID REFERENCE
(to nearest 1,000 metres)
MG9754
If reporting beyond 18° in any direction,
prefix Grid Zone Designation with: 14WMG9754

TEN THOUSAND METRE
UNIVERSAL TRANSVERSE MERCATOR GRID
ZONE 14



ABERDEEN LAKE
66B
EDITION 1

JOPOGRAPHICAL SURVEY DIRECTORAT
SERVICE TOPOGRAPHIQUE
DATE: 1 Dec 81
Q.C. APPROVES RELEASE
C.O. APPROUVE

NOV 23 1981

66-B