

Ce document est le produit d'une
numérisation par balayage
de la publication originale.

65 E

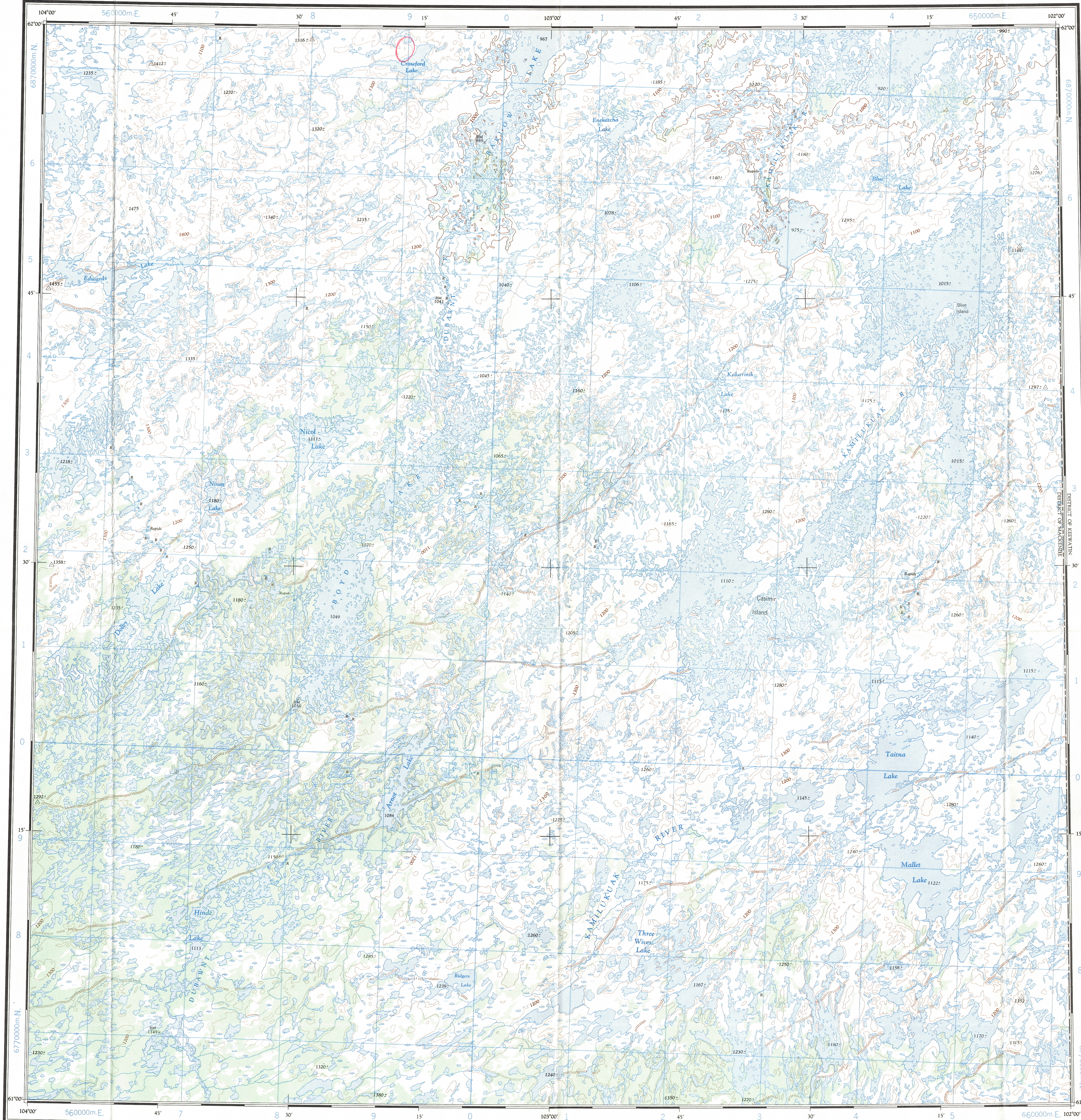
1:250,000

CANADA

EDITION 1

65 E

Refer to
this map as:
65 E
EDITION 1 ASE
SERIES A 502



Boyd Lake Cont.

GRID ZONE DESIGNATION	100,000 M. SQUARE IDENTIFICATION
13 V	EU/FU ET/FT 6

TO GIVE A REFERENCE TO NEAREST 1000 METRES

EXAMPLE: RAPIDS

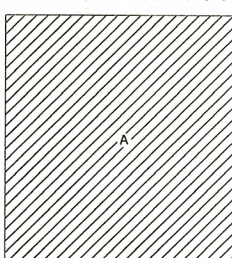
SQUARE: Road letters of 100,000 m. square	ET
EASTING: Road number on grid line immediately to left of point	8
Estimate tenths of a square from this line eastward to point	86
NORTHING: Road number on grid line immediately below point	9
Estimate tenths of a square from this line northward to point	98

MILITARY GRID REFERENCES to nearest 1,000 metres: ET8698

If reporting beyond 15° in any direction prefix Grid Zone Designation as: 13VET8698

TEN THOUSAND METRE
UNIVERSAL TRANSVERSE MERCATOR GRID
ZONE 13

COMPILATION DIAGRAM - SOURCES UTILISÉES



A - Consulted photographically from 1955-60 aerial photography
A - Établie par procédés photographiques à partir de photographies aériennes, de 1955-60

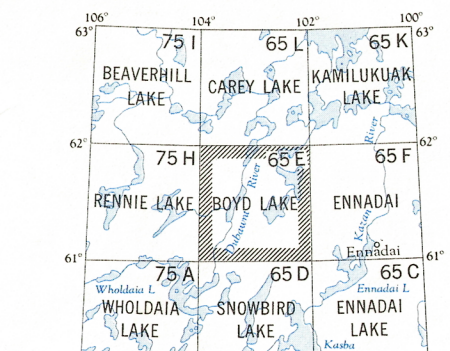
Roads: loose surface, dry weather. Routes: de gravier, période sèche.
cart track, trail. de terre, sentier.
Spot elevation: precise, approximate. Point coté: précis, approximatif.
Boundary monument. Borne frontalière.
Pingo. Buttes de terre.
Depression contours. Courbes de cotelette.
Cliff or low relief. Falaise ou relief peu accentué.
Esker. Esker.

Miles 5 0 5 10 15 20 30
Kilometres 5 0 5 10 15 20 30

Transverse Mercator Projection
North American Datum 1927
Contour Interval 100 feet
Elevations in feet above Mean Sea Level
Copies may be obtained from the Map Distribution Office,
Department of Mines and Technical Surveys, Ottawa.

BOYD LAKE
DISTRICT OF MACKENZIE
NORTHWEST TERRITORIES
Scale 1:250,000 Échelle

Publié par le SERVICE TOPOGRAPHIQUE DE L'ARMÉE,
(G.R.C.). Renseignements à jour en 1960. Imprimée en 1966.
La déclinaison magnétique (1964) varie de 21°00' vers l'est au centre
de la bordure ouest de la feuille à 17°50' vers l'est au centre de la
bordure est.



BOYD LAKE
65 E
EDITION 1

TOPOGRAPHICAL SURVEY DIRECTORATE
SERVICE TOPOGRAPHIQUE
DATE 1-06-83
Q.C. APPROVES RELEASE
C.Q. APPROUVE

Report

65-E