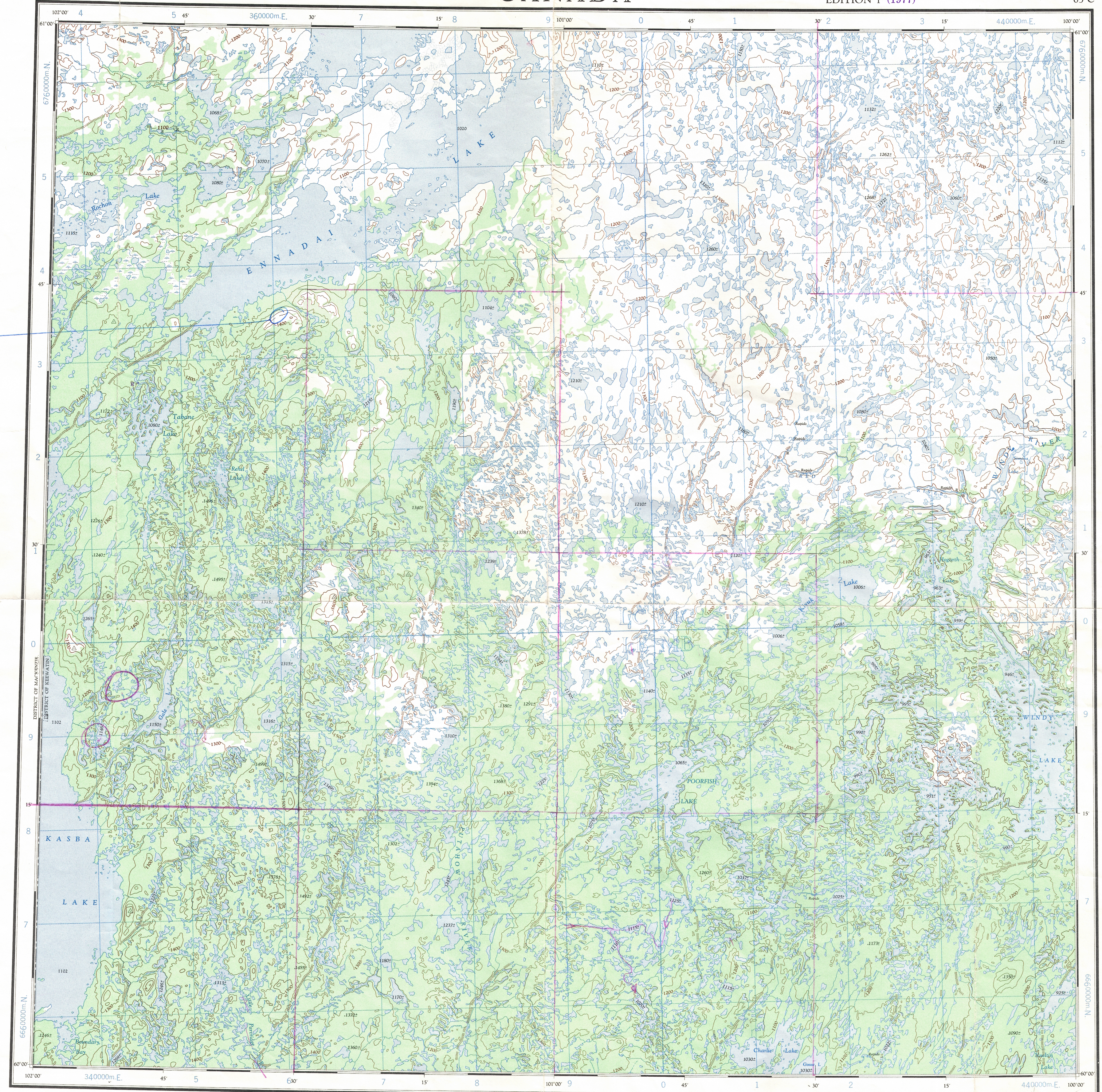


This document was produced  
by scanning the original publication.  
Ce document est le produit d'une  
numérisation par balayage  
de la publication originale.

Refer to  
this map as:  
65 C  
EDITION 1 ASE  
SERIES A 502



GRID ZONE  
DESIGNATION  
14V

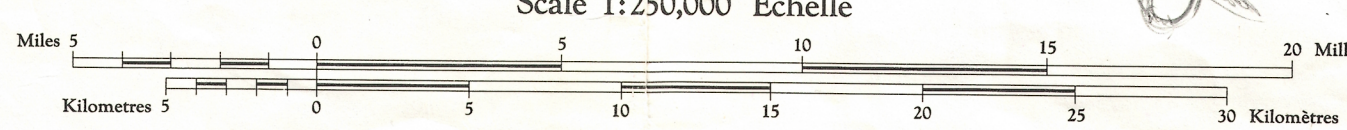
TO GIVE A REFERENCE TO NEAREST 1000 METRES  
EXAMPLE: SPOT ELEVATION  
SQUARE: Read letters of 100,000 m. square LC  
EASTING: Read number on grid line  
immediately to left of point  
Estimate tenths of a square from  
this line eastward to point.  
NORTHING: Read number on grid line  
immediately below point  
Estimate tenths of a square from  
this line northward to point.  
MILITARY GRID REFERENCE  
(no nearest 1,000 metres)  
LCB611  
If reporting beyond 18° in any direction  
prefix Grid Zone Designation as 14VLCB611

TEN THOUSAND METRE  
UNIVERSAL TRANSVERSE MERCATOR GRID  
ZONE 14

THE DECLINATION OF THE COMPASS NEEDLE 1963  
DECLINAISON MAGNETIQUE EN 1963

Produced by the ARMY SURVEY ESTABLISHMENT, R.C.E.  
Information depicted current as of 1963.  
Copies may be obtained from the Map Distribution Office,  
Department of Mines and Technical Surveys, Ottawa.  
Interim corrections 1977.

Roads: loose surface, all weather... de gravier, toute saison...  
cart track, trail... de terre, sentier...  
Spot elevation: precise, approximate... Point coté; précis, approximatif...  
Boundary monument... Bornes-frontière...  
Pingo... Buttes de terre...  
Depression contours... Courbes de creux...  
Cliff or low relief... Falaise ou relief peu accentué...  
Esker... Esker...



# ENNADAI LAKE

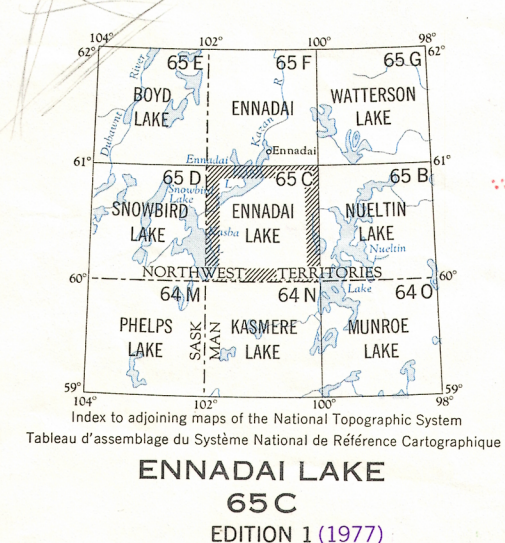
DISTRICT OF KEEWATIN  
NORTHWEST TERRITORIES  
Scale 1:250,000 Échelle

Transverse Mercator Projection  
North American Datum 1927  
Contours Interval 100 feet  
Elevations in feet above Mean Sea Level

Projection transverse de Mercator  
Réseau géodésique nord-américain unifié 1927  
Équidistance des courbes: 100 pieds  
Élévations en pieds au-dessus du niveau moyen de la mer

Publiée par le SERVICE TOPOGRAPHIQUE DE L'ARMÉE,  
(G.S.R.C.). Renseignements à jour en 1963.  
Ces cartes sont en vente au Bureau de distribution des cartes,  
ministère des Mines et des Relevés techniques, Ottawa.  
Corrections Provisoires, 1977.

Building... Bâtiment...  
Post office... Bureau de poste...  
Church... Église...  
School... École...  
Astronomical monument... Repère astronomique...  
R.C.M.P. Detachment... Poste de la G.R.C...  
Horizontal control point... Point géodésique...  
Landing ground... Piste d'atterrissage...  
Intermittent stream... Cours d'eau intermittent...  
P... Intermittent Lake... Lac intermittent...  
Rapids; falls... Rapides; chute...  
Marsh or Swamp... Marais ou marécage...  
String bogs... Marais en chapelet...  
Icefield or Glacier... Champ de glace ou glacier...  
Tundra polygons... Sols polygonaux...  
Tundra ponds... Étangs: le toundra...



TOPOGRAPHICAL SURVEY DIRECTORATE  
SERVICE TOPOGRAPHIQUE  
DATE 28/11/77  
C.O. APPROVES RELEASE  
C.O. APPROVE

Registrar  
Very Poor.

See file  
overprint  
Aug 77  
Reprint Nov 77