

Ce document est le produit d'une numérisation par balayage de la publication originale.
This document was produced by scanning the original publication.

64-1

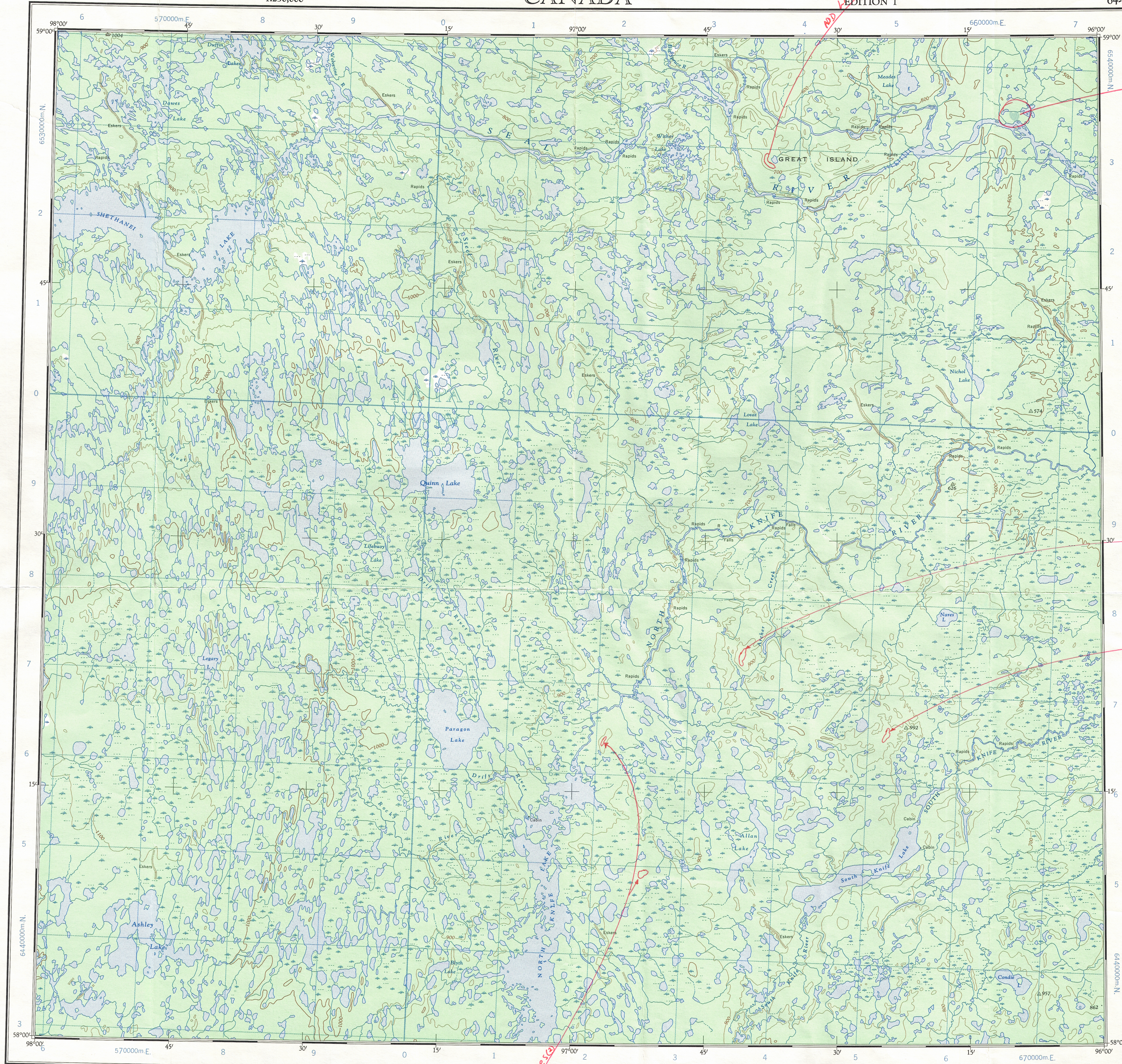
1:250,000

CANADA

EDITION 1

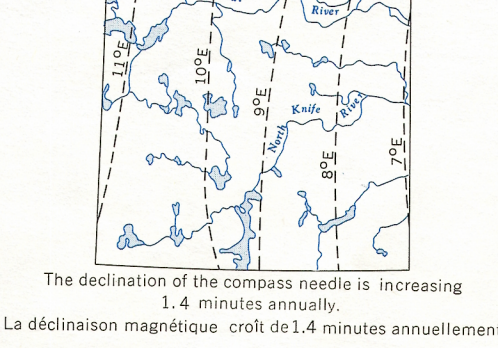
64-1

Refer to this map as: 64-1 EDITION 1 ASE SERIES A 502



THE DECLINATION OF THE COMPASS NEEDLE 1963

DECLINAISON MAGNETIQUE EN 1963



Compiled, 1962, by the SURVEYS AND MAPPING BRANCH, DEPARTMENT OF MINES AND TECHNICAL SURVEYS, from air photographs taken from 1955 to 1957. Field surveys 1959. Printed in 1963.

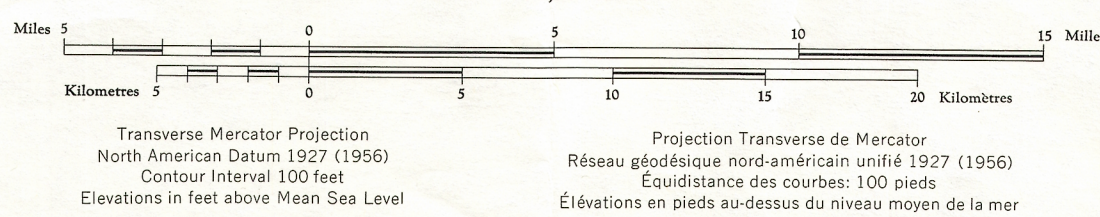
Copies may be obtained from the Map Distribution Office, Department of Mines and Technical Surveys, Ottawa.

- Road, all weather.....Chemin, toute saison.....
- Wagon or winter road.....Chemin de terre ou d'hiver.....
- Trail or portage.....Sentier ou portage.....
- Town.....Ville.....
- Village or settlement.....Village ou hameau.....
- Post office.....Bureau de poste.....
- Horizontal control point.....Point géodésique.....
- Boundary monument.....Borne frontière.....

SHETHANEI LAKE

MANITOBA

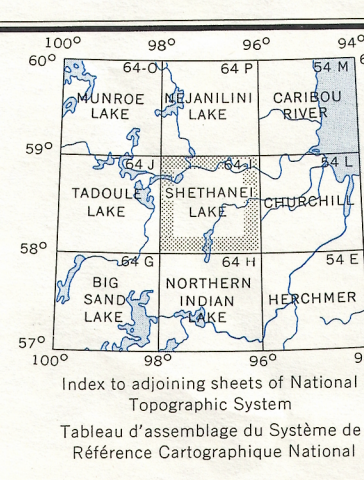
Scale 1:250,000 Échelle



Rédigé en 1962, par la DIRECTION DES LEVÉS ET DE LA CARTOGRAPHIE, MINISTÈRE DES MINES ET DES RELEVÉS TECHNIQUES, d'après les photographies aériennes prises de 1955 à 1957. Travaux exécutés sur le terrain en 1959. Imprimé en 1963.

Ces cartes sont en vente au Bureau de distribution des cartes, ministère des Mines et des Relevés techniques, Ottawa.

- Stream.....Cours d'eau
- intermittent or dry.....intermittent ou à sec.....
- indefinite.....imprécis.....
- Rapids; falls.....Rapides; chutes.....
- Marsh or swamp.....Marais ou marécage.....
- Intermittent lake.....Lac intermittent.....
- Depression contours.....Courbes de cuvette.....
- Spot elevation, in feet.....Repère de nivellement en pieds.....2500



GRID ZONE DESIGNATION	100,000 M. SQUARE IDENTIFICATION												
14V	<table><tr><td>N</td><td>A</td><td>P</td><td>A</td></tr><tr><td>N</td><td>V</td><td>P</td><td>V</td></tr><tr><td>6</td><td></td><td></td><td>5</td></tr></table>	N	A	P	A	N	V	P	V	6			5
N	A	P	A										
N	V	P	V										
6			5										
TO GIVE A REFERENCE TO NEAREST 1000 METRES													
EXAMPLE: CABIN													
SQUARE: Read letters of 100,000 m. square: PV													
EASTING: Read number on grid line immediately to left of point													
Estimate tenths of a square from this line eastward to point:													
NORTHING: Read number on grid line immediately below point													
Estimate tenths of a square from this line southward to point:													
MILITARY GRID REFERENCE (to nearest 1,000 metres)	PV1355												
If reporting beyond 18° in any direction, prefix Grid Zone Designation as: 14V PV1355													

TEN THOUSAND METRE
UNIVERSAL TRANSVERSE MERCATOR GRID
ZONE 14

SERVICE TOPOGRAPHIQUE
DATE 15-01-50
C.O. APPROVES RELEASE
C.O. APPROVE

SHETHANEI LAKE
64-1
EDITION 1

REPRINT

64-1