

Ce document est le produit d'une numérisation par balayage de la publication originale.
This document was produced by scanning the original publication.

63 L

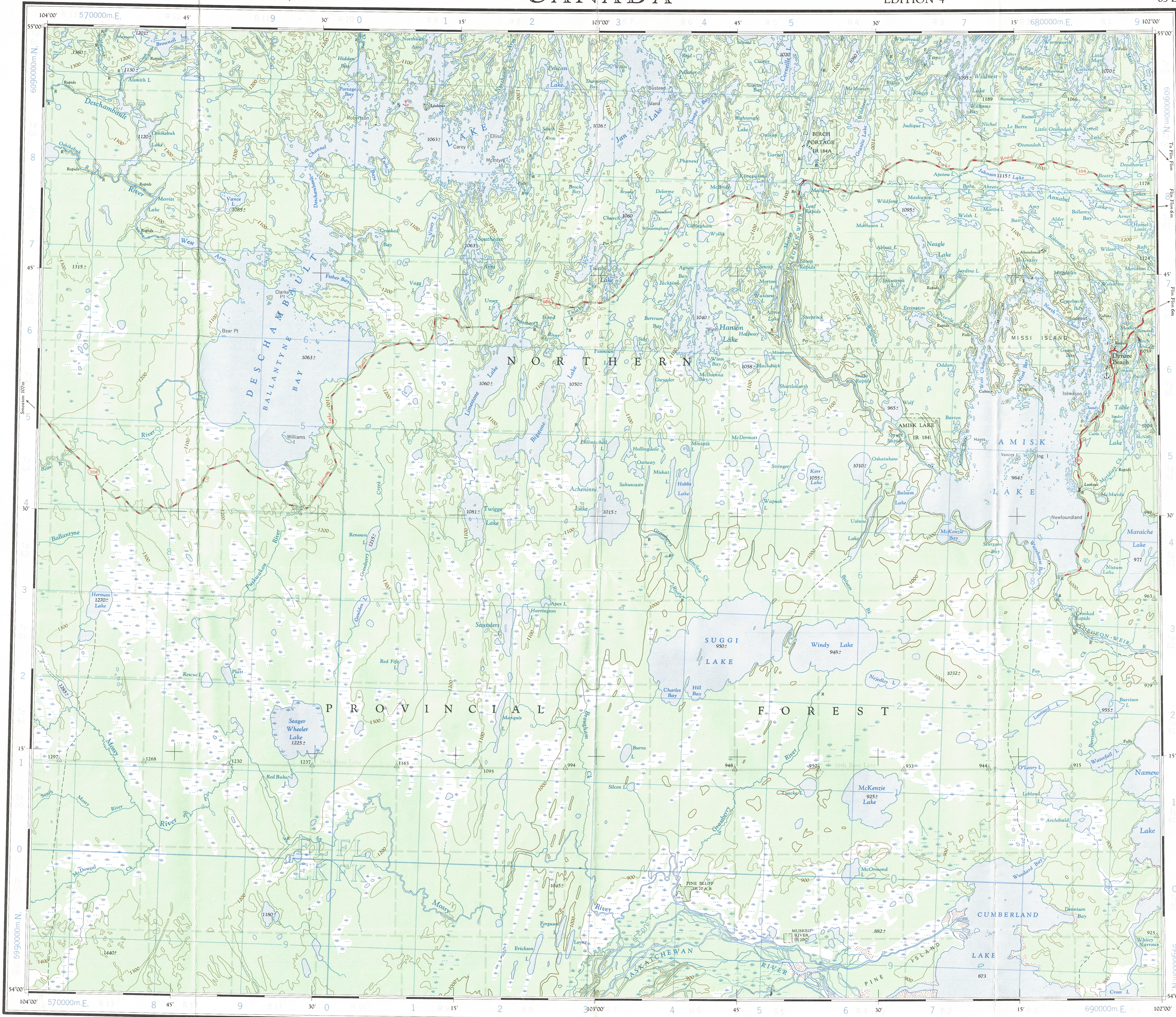
1:250,000

CANADA

EDITION 4

63 L

Refer to
this map as:
63 L
EDITION 4 ASE
SERIES A 502

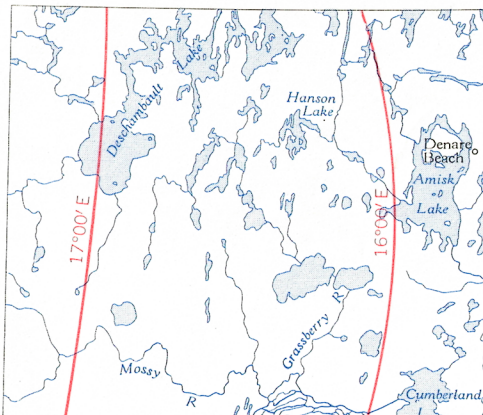


TOPOGRAPHICAL SURVEY DIRECTORATE
SERVICE TOPOGRAPHIQUE
DATE 2-04-86
C.C. APPROVES RELEASE
C.O. APPROUVE

| 100,000 M. SQUARE IDENTIFICATION | |
|--|---------------------|
| GRID ZONE DESIGNATION 13 U | EL FL EK FK 6 |
| TO GIVE A REFERENCE TO NEAREST 1000 METRES EXAMPLE: ROAD JUNCTION | |
| SQUARE: Read letters of 100,000 m. square | FL |
| EASTING: Read number on grid line immediately to left of point | 4 |
| Estimate tenths of a square from this line eastward to point | 2 |
| NORTHING: Read number on grid line immediately below point | 7 |
| Estimate tenths of a square from this line northward to point | 7 |
| MILITARY GRID REFERENCE (to nearest 1,000 metres) | FL4277 |
| If reporting beyond 18° in any direction prefix Grid Zone Designation as: 13UFL4277 | |

TEN THOUSAND METRE
UNIVERSAL TRANSVERSE MERCATOR GRID
ZONE 13

THE DECLINATION OF THE COMPASS NEEDLE 1963
DECLINAISON MAGNETIQUE EN 1963



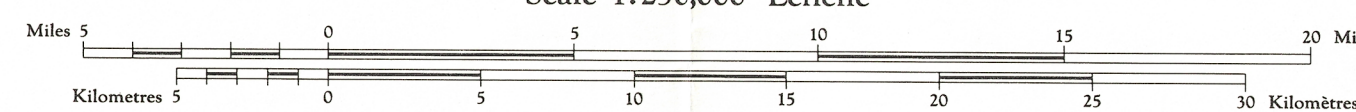
Produced by the ARMY SURVEY ESTABLISHMENT, R.C.E.
Information depicted current as of 1955. Imprimée en 1955.
Copies may be obtained from the Map Distribution Office,
Department of Mines and Technical Surveys, Ottawa.

AMISK LAKE

SASKATCHEWAN

WEST OF SECOND MERIDIAN

Scale 1:250,000 Échelle

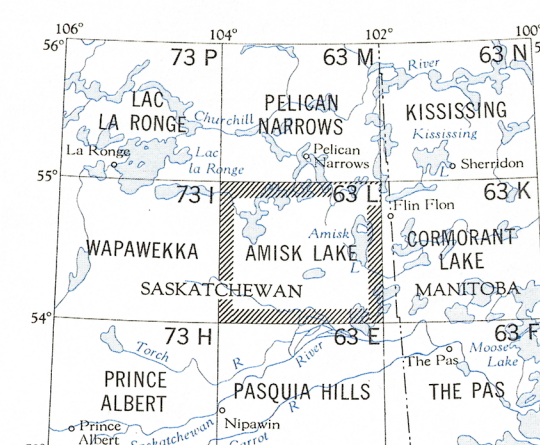


Transverse Mercator Projection
North American Datum 1927
Elevations in feet above Mean Sea Level

Projection transverse de Mercator
Réseau géodésique nord-américain unifié 1927
Équidistance des courbes 100 pieds
Élévations en pieds au-dessus du niveau moyen de la mer

Publiée par le SERVICE TOPOGRAPHIQUE DE L'ARMÉE,
(G.R.C.). Renseignements à jour en 1955. Imprimée en 1955.
Ces cartes sont en vente au Bureau de distribution des cartes,
ministère des Mines et des Relevés techniques, Ottawa.

| | | | | |
|-----------------------|-------------------|---|--------------------------|-----------------------|
| Town | Ville | □ | Stream | Cours d'eau |
| Village or Settlement | Village ou hameau | ○ | Intermittent or dry | intermittent ou à sec |
| Post Office | Bureau de poste | P | Intermittent lake | Lac intermittent |
| Church | Église | ✠ | Rapids; falls | Rapides; chute |
| School | École | ✠ | Marsh or Swamp | Marais ou marécage |
| Boundary monument | borne-frontière | ✠ | Lighthouse | Phare |
| Airport | Aéroport | ✠ | Horizontal control point | Point géodésique |
| Seaplane base | Base d'hydravions | ✠ | Landing ground | Piste d'atterrissage |
| | | ✠ | Seaplane anchorage | Amarage d'hydravions |



AMISK LAKE
63 L
EDITION 4