

Ce document est le produit d'une numérisation par balayage de la publication originale.
This document was produced by scanning the original publication.

53 L

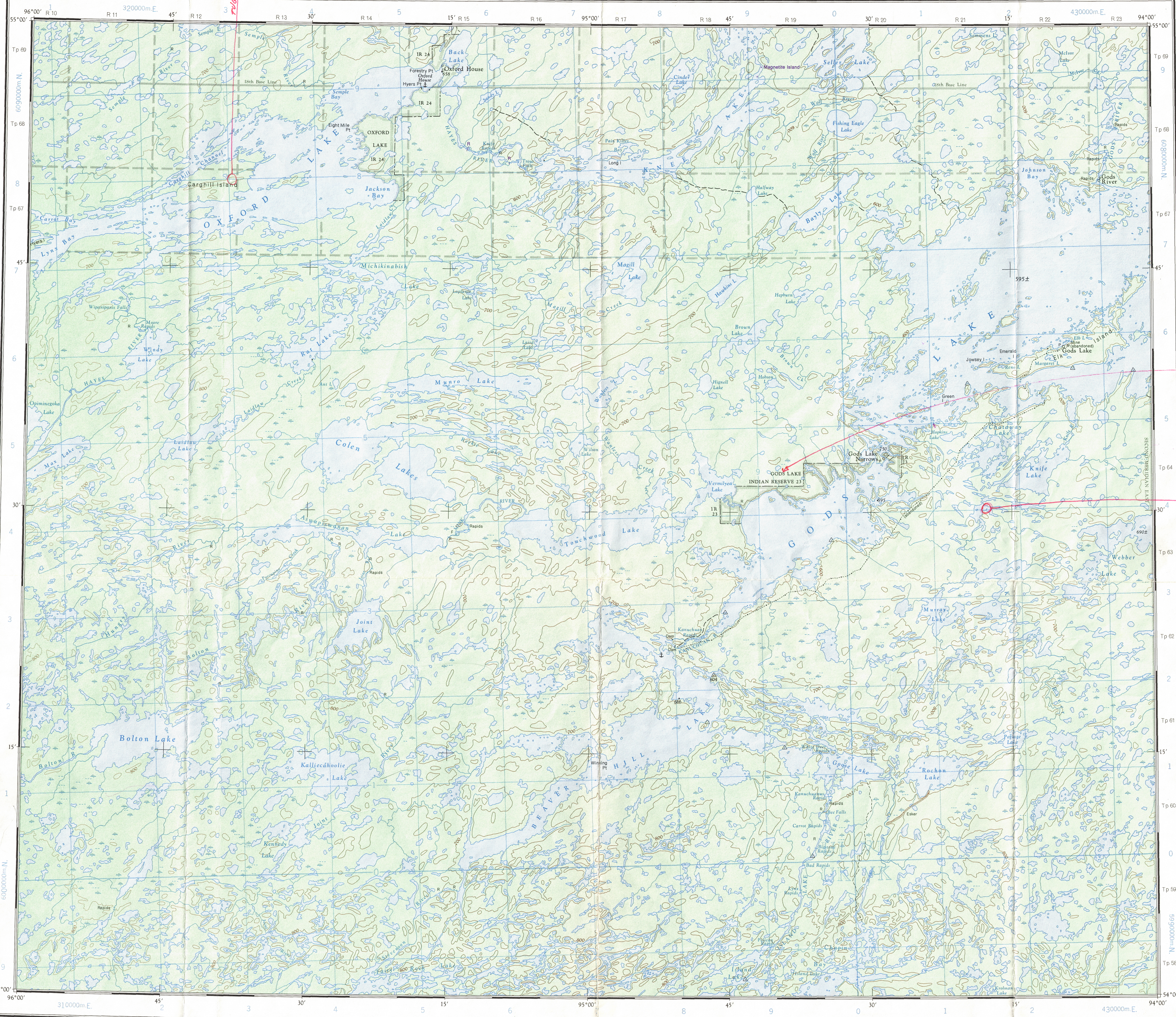
1:250,000

CANADA

EDITION 4 (1977)

53 L

Refer to this map as: 53 L EDITION 4 ASE SERIES A 501



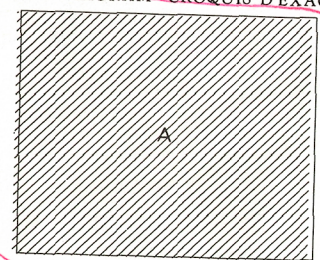
INDIAN RESERVE
SHOULD HAVE APOSTROPHE
118-06-85

K BLUE

GRID ZONE IDENTIFICATION
15U
TO GIVE A REFERENCE TO NEAREST 1000 METRES
EXAMPLE: DAM
SQUARE: Read letters of 100,000 m. square UL
EASTING: Read number on grid line immediately to left of point. Estimate tenths of a square from this line eastward to point.
NORTHING: Read number on grid line immediately below point. Estimate tenths of a square from this line northward to point.
MILITARY GRID REFERENCE (to nearest 1,000 metres) UL8025
If reporting beyond 10° in any direction prefix Grid Zone Designation as: 15UUL8025

TEN THOUSAND METRE
UNIVERSAL TRANSVERSE MERCATOR GRID
ZONE 15

RELIABILITY DIAGRAM - CROQUIS D'EXACTITUDE



A - Stereo compiled from 1954-56 aerial photographs
A - Rédigé par stéréorestitution d'après des photographies aériennes prises en 1954-56

Compiled, 1963, by the SURVEYS AND MAPPING BRANCH, DEPARTMENT OF MINES AND TECHNICAL SURVEYS. Field surveys 1958 and 1962. Printed 1965.

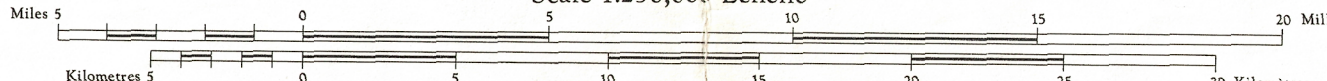
Magnetic declination 1964 varies from 08°16' easterly at centre of west edge to 05°06' easterly at centre of east edge. Mean annual change is 0.9' minutes easterly.

Some names on this map are not yet official. Corrections or additions are invited by the Surveys and Mapping Branch.

Interim corrections 1977

OXFORD HOUSE
MANITOBA

Scale 1:250,000 Échelle



Transverse Mercator Projection
North American Datum 1927
Contour Interval 100 feet
Elevations in feet above Mean Sea Level
Copies may be obtained from the Map Distribution Office, Department of Mines and Technical Surveys, Ottawa.

Projection Transverse de Mercator
Niveau de référence nord-américain, 1927
Équidistance des courbes: 100 pieds
Élévations en pieds au-dessus du niveau moyen de la mer
Ces cartes sont en vente au Bureau de distribution des cartes, ministère des Mines et des Relevés techniques, Ottawa.

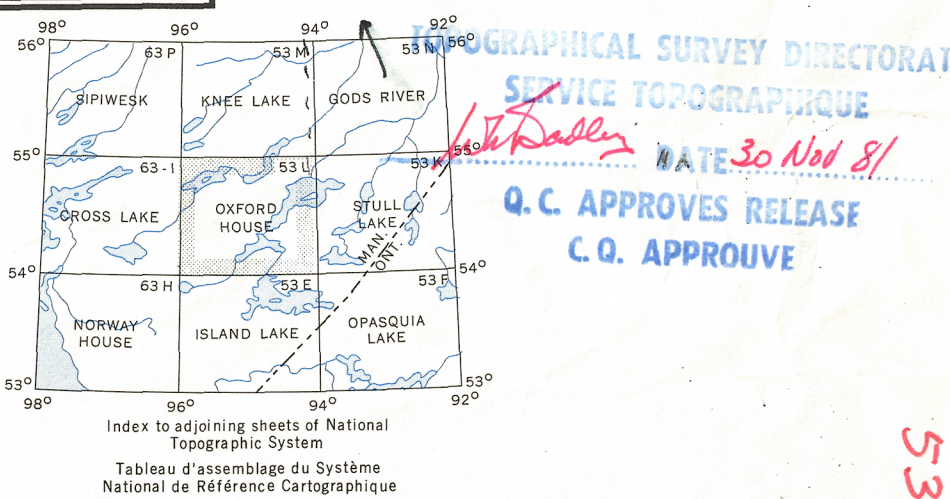
Certain names inscribed on this map are not yet official. Corrections or additions are invited by the Surveys and Mapping Branch.

Corrections Provisaires, 1977

Rédigée en 1963, par la DIRECTION DES LEVÉS ET DE LA CARTOGRAPHIE, MINISTÈRE DES MINES ET DES RELEVÉS TECHNIQUES. Levés sur le terrain en 1958 et 1962. Imprimée en 1965.

La déclinaison magnétique pour 1964 varie de 08°16' Est au centre de la limite Ouest à 05°06' Est au centre de la limite Est. Variation moyenne annuelle 0.9' Est.

Stream: Cours d'eau
intermittent or dry: intermittent ou à sec
undrained: im drainé
Rapid: Rapids: chutes
Marsh or swamp: Marais ou marécage
Intermittent lake: Lac intermittent
Depression contour: Courbes de cuvette
Spot elevation, in feet: Repère de nivellement en pieds: 2150.



GRAPHICAL SURVEY DIRECTORATE
SERVICE TOPOGRAPHIQUE
DATE 30 Nov 81
Q.C. APPROVES RELEASE
C.Q. APPROUVE

OXFORD HOUSE
53 L
EDITION 4 (1977)

Reprints.

NOTE: BLACK TYPE SLIGHTLY OUT OF REGISTRATION.