

Ce document est le produit d'une numérisation par balayage de la publication originale.

53 D

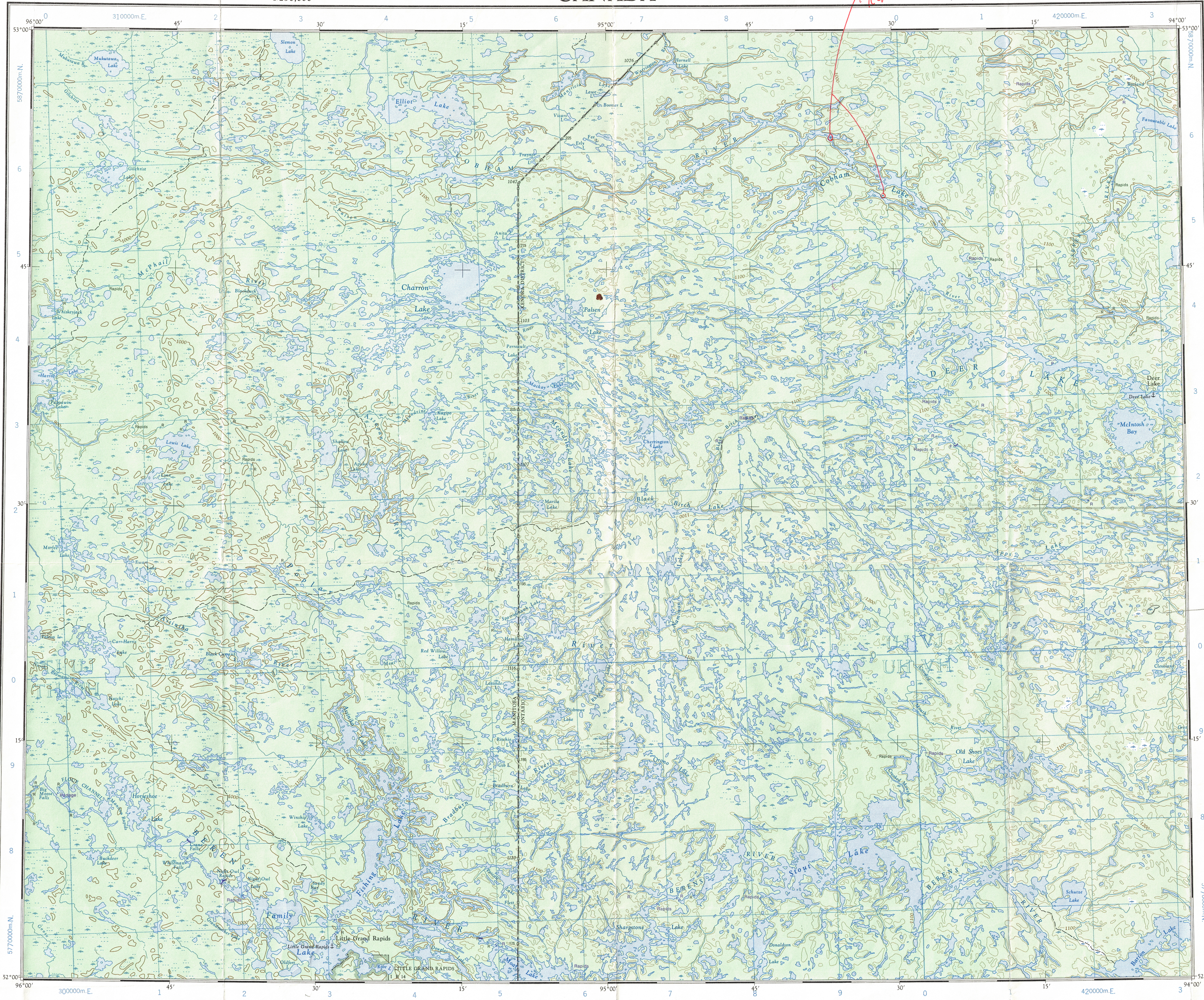
1:250,000

CANADA

EDITION 2 (1977)

53 D

Refer to this map as: 53D EDITION 2 ASE SERIES A 501

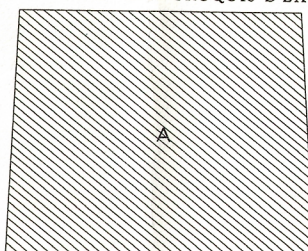


TOPOGRAPHICAL SURVEY DIRECTORATE
SERVICE TOPOGRAPHIQUE
DATE 16-03-82
Q.C. APPROVES RELEASE
C.O. APPROUVE

GRID ZONE DESIGNATION		100,000 M. SQUARE IDENTIFICATION							
15U	<table border="1"><tr><td>TJ</td><td>UH</td></tr><tr><td>VJ</td><td>VH</td></tr></table>	TJ	UH	VJ	VH	58	<table><tr><td>3</td><td>4</td></tr></table>	3	4
		TJ	UH						
		VJ	VH						
3	4								
TO GIVE A REFERENCE TO NEAREST 1000 METRES									
EXAMPLE: RAPIDS									
SQUARE: Read letters of 100,000 m. square UJ									
EASTING: Read number on grid line immediately to left of point									
Estimate tenths of a square from this line eastward to point.									
NORTHING: Read number on grid line immediately below point									
Estimate tenths of a square from this line northward to point.									
MILITARY GRID REFERENCE (to nearest 1,000 metres)									
15UJ2613									
If reporting beyond 10° in any direction, prefix Grid Zone Designation as: 15UJ2613									

TEN THOUSAND METRE
UNIVERSAL TRANSVERSE MERCATOR GRID
ZONE 15

RELIABILITY DIAGRAM - CROQUIS D'EXACTITUDE



A - Stereo-compiled from 1954-57 aerial photographs.
A - Rédigé par stéréorestitution d'après des photographies aériennes prises en 1954-57.

Compiled 1963, by the SURVEYS AND MAPPING BRANCH,
DEPARTMENT OF MINES AND TECHNICAL SURVEYS.
Field surveys 1958 and 1960. Printed 1965.
Magnetic declination 1964 varies from 08°03' easterly at
centre of west edge to 05°26' easterly at centre of east
edge. Mean annual change: 0.1' easterly.
Interim corrections 1977

Road, dry weather.....Route, temps sec.....
Wagon or winter road.....Chemin de terre ou d'hiver.....
Trail or portage.....Sentier ou portage.....
Town.....Ville.....
Village or Settlement.....Village ou hameau.....
Post Office.....Bureau de poste.....
Horizontal control point.....Point géodésique.....
Boundary monument, Bonne frontière.....

Miles 5 0 5 10 15 20 25 30 Miles
Kilometres 5 0 5 10 15 20 25 30 Kilometres

Transverse Mercator Projection
North American Datum 1927
Contour interval: 100 feet
Elevations in feet above Mean Sea Level
Copies may be obtained from the Map Distribution Office,
Department of Mines and Technical Surveys, Ottawa.

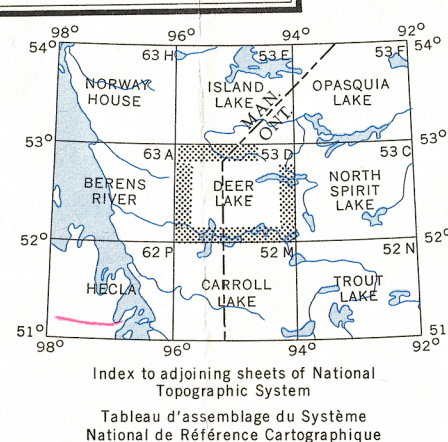
DEER LAKE
ONTARIO - MANITOBA

Scale 1:250,000 Échelle

Projection Transverse de Mercator
Niveau de référence nord-américain, 1927
Équidistance des courbes: 100 pieds
Élévations en pieds au-dessus du niveau moyen de la mer
Ces cartes sont en vente au Bureau de distribution des cartes,
ministère des Mines et des Relevés techniques, Ottawa.

Rédigé en 1963, par la DIRECTION DES LEVES ET DE LA
CARTOGRAPHIE, MINISTÈRE DES MINES ET DES RELEVÉS
TECHNIQUES. Levés sur le terrain en 1958 et 1960. Imprimé en
1965.
La déclinaison magnétique pour 1964 varie de 08°03' Est au
centre de la limite Ouest à 05°26' Est au centre de la limite
Est. Variation moyenne annuelle: 0.1' Est.
Corrections Provisaires, 1977

Stream.....Cours d'eau.....
Intermittent or dry.....Intermittent ou à sec.....
Indefinite.....Imprecis.....
Rapids; falls.....Rapides; chute.....
Marsh or swamp.....Marais ou marécage.....
Intermittent lake.....Lac intermittent.....
Depression contours.....Courbes de cuvette.....
Spot Elevation, in feet.....Repère de nivellement en pieds.....2550.



AUG 12 1982

DEER LAKE
53D
EDITION 2 (1977)
REPRINT