

Ce document est le produit d'une numérisation par balayage de la publication originale.  
This document was produced by scanning the original publication.

43 D

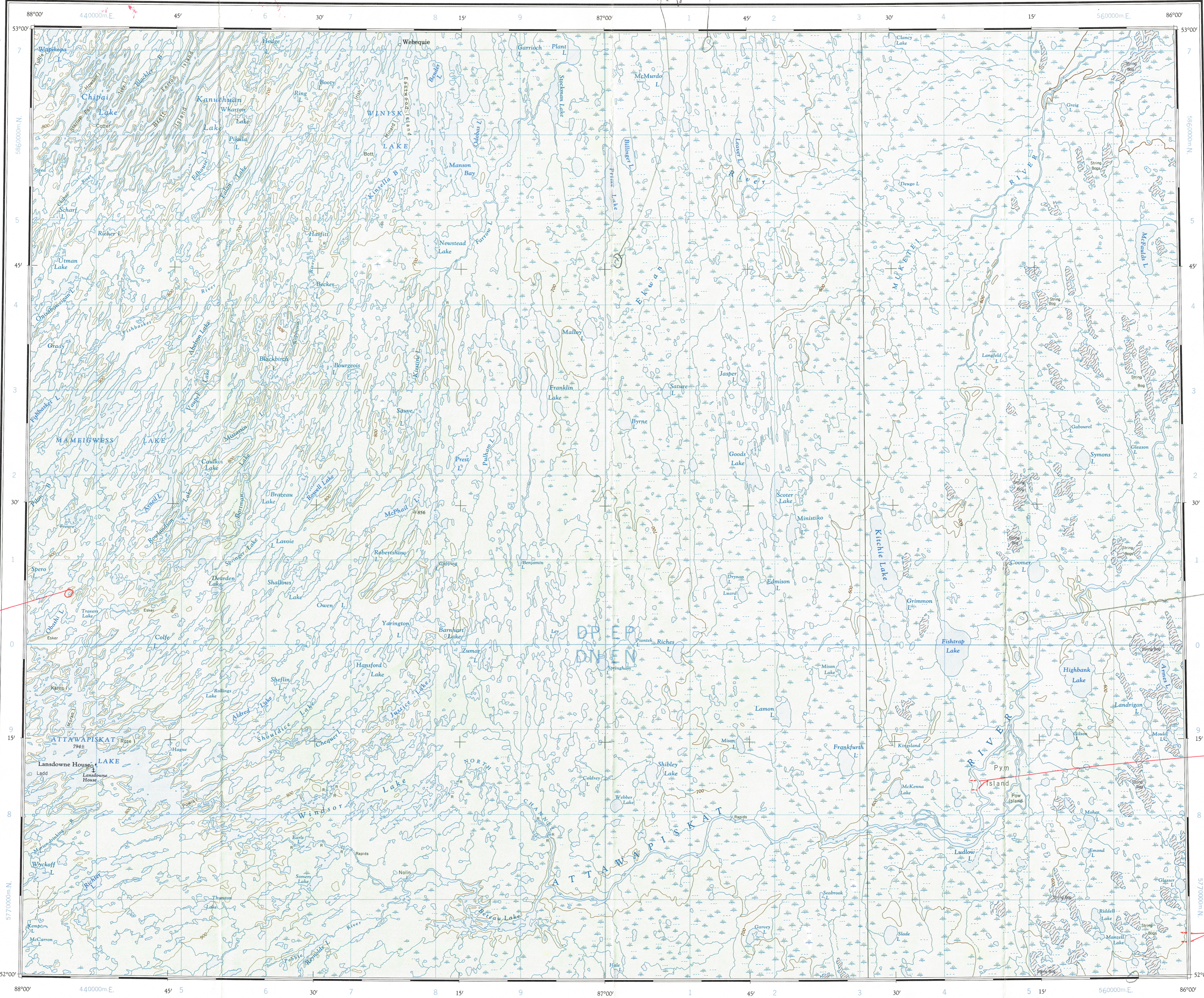
1:250,000

CANADA

EDITION 1

43 D

Refer to this map as:  
43 D  
EDITION 1 ASE  
SERIES A 501



100,000 M. SQUARE IDENTIFICATION

GRID ZONE DESIGNATION  
16U

D	P	E	P
D	N	E	N
5	58		

TO GIVE A REFERENCE TO NEAREST 1000 METRES

EXAMPLE: POND

SQUARE: Read letters of 100,000 m. square DN

EASTING: Read number on grid line immediately to left of point 8

Estimate tenths of a square from this line eastward to point. 86

NORTHING: Read number on grid line immediately below point 8

Estimate tenths of a square from this line northward to point. 89

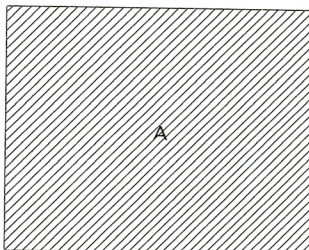
MILITARY GRID REFERENCE (to nearest 1,000 metres)

DN 8689

If reporting beyond 18° in any direction, prefix Grid Zone Designation as: 16UDN8689

TEN THOUSAND METRE  
UNIVERSAL TRANSVERSE MERCATOR GRID  
ZONE 16

RELIABILITY DIAGRAM - CROQUIS D'EXACTITUDE



A - Stereo-compiled from aerial photographs taken in 1954.  
A - Rédigé par stéréorestitution d'après des photographies aériennes prises en 1954.

Compiled, 1964, by the SURVEYS AND MAPPING BRANCH,  
DEPARTMENT OF MINES AND TECHNICAL SURVEYS.  
Field surveys 1959-62. Printed 1966.

Magnetic declination 1965 varies from 03°25' westerly at  
centre of west edge to 08°24' westerly at centre of east  
edge. Mean annual change 3.4' easterly.

Road, all weather.....Chemin, toute saison.....  
Wagon or winter road.....Chemin de terre ou d'hiver.....  
Trail or portage.....Sentier ou portage.....

Miles 5 0 5 10 15 20 25 30 Miles  
Kilometres 5 0 5 10 15 20 25 30 Kilometres

Transverse Mercator Projection  
North American Datum 1927  
Contour interval 100 feet  
Elevations in feet above Mean Sea Level  
Copies may be obtained from the Map Distribution Office,  
Department of Mines and Technical Surveys, Ottawa.

LANSDOWNE HOUSE  
KENORA DISTRICT  
ONTARIO

Scale 1:250,000 Échelle

Projection Transverse de Mercator  
Niveau de référence nord-américain, 1927  
Équidistance des courbes: 100 pieds  
Élévations en pieds au-dessus du niveau moyen de la mer  
Ces cartes sont en vente au Bureau de distribution des cartes,  
ministère des Mines et des Relevés techniques, Ottawa.

Rédigé en 1964, par la DIRECTION DES LEVÉS ET DE LA  
CARTOGRAPHIE, MINISTÈRE DES MINES ET DES RELEVÉS  
TECHNIQUES. Levés sur le terrain en 1959-62. Imprimée en 1966.

La déclinaison magnétique pour 1965 varie de 03°25' Ouest  
au centre de la limite Ouest à 08°24' Ouest au centre de la  
limite Est. Variation moyenne annuelle 3.4' Est.

TOPOGRAPHICAL SURVEY DIRECTORATE  
SERVICE TOPOGRAPHIQUE

Q.C. APPROVES RELEASE  
Q.C. APPROUVE

Index to adjoining sheets of National  
Topographic System  
Tableau d'assemblage au Système  
National de Référence Cartographique

LANSDOWNE HOUSE  
43 D  
EDITION 1  
REPRINT