

This document was produced
by scanning the original publication.
Ce document est le produit d'une
numérisation par balayage
de la publication originale.

33 P

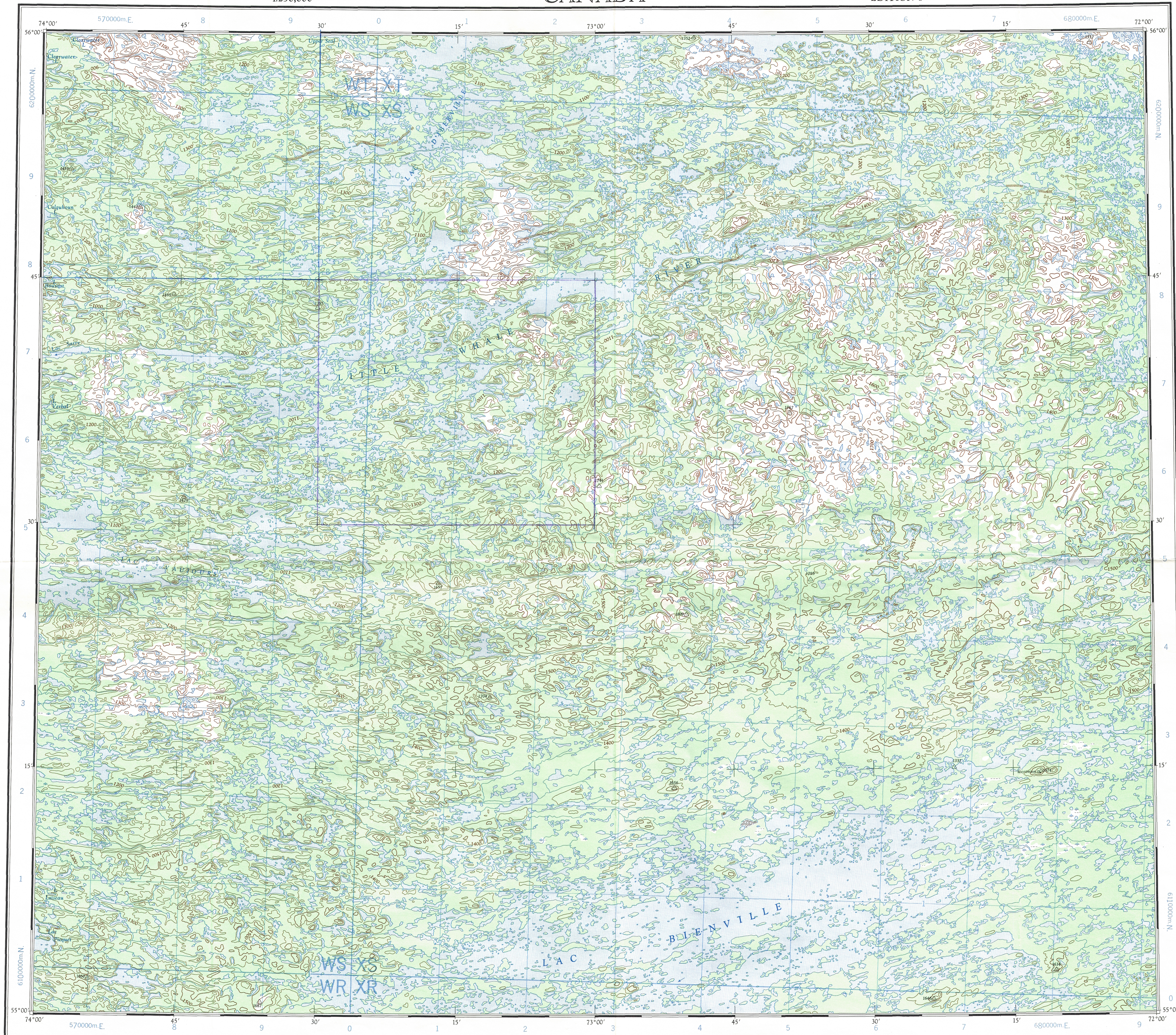
1:250,000

CANADA

EDITION 1

33 P

Refer to
this map as:
33 P
EDITION 1 ASE
SERIES A 501



100,000 M. SQUARE IDENTIFICATION	
GRID ZONE DESIGNATION	WTXT WSXS WRXR 6
18U	62 61 6

TO GIVE A REFERENCE TO NEAREST 1000 METRES

EXAMPLE: HOUSE

SQUARE: Read letters of 100,000 m. square XS

EASTING: Read number on grid line immediately to left of point. Estimate tenths of a square from this line eastward to point.

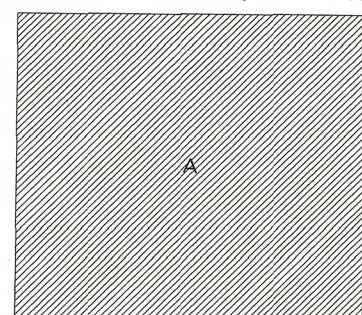
NORTHING: Read number on grid line immediately below point. Estimate tenths of a square from this line northward to point.

MILITARY GRID REFERENCE (to nearest 1000 metres) XS7825

If reporting beyond 10° in any direction prefix Grid Zone Designation as: 18UXS7825

TEN THOUSAND METRE
UNIVERSAL TRANSVERSE MERCATOR GRID
ZONE 18

RELIABILITY DIAGRAM - CROQUIS D'EXACTITUDE



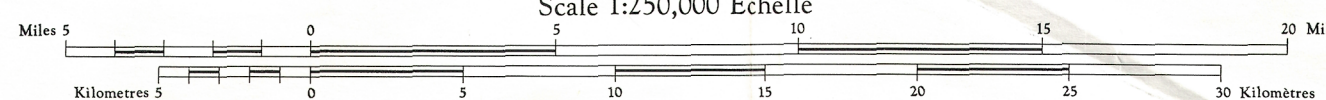
A - Stereo compiled from 1954 aerial photography.
A - Rédigée par stéréorestitution d'après des photographies
aériennes prises en 1954.

Produced, 1965, by the SURVEYS AND MAPPING BRANCH,
DEPARTMENT OF ENERGY, MINES AND RESOURCES.
Field surveys 1955. Printed 1961.
Magnetic declination 1965 varies from 25°11' westerly at
centre of west edge to 27°45' westerly at centre of east
edge. Mean annual change 6.4 easterly.
For complete reference see reverse side.

Some names on this map are not yet official.
Corrections or additions are invited by the
Survey and Mapping Branch.

LAC BIENVILLE
QUÉBEC

Scale 1:250,000 Échelle

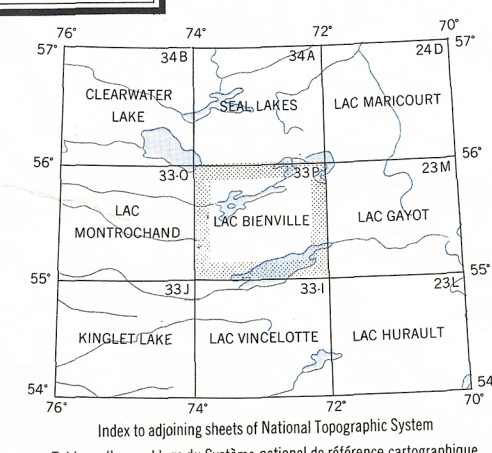


Transverse Mercator Projection
North American Datum 1927
Contour interval 100 feet
Elevations in feet above Mean Sea Level
Copies may be obtained from the Map Distribution Office,
Department of Energy, Mines and Resources, Ottawa.

Projection Transverse de Mercator
Niveau de référence nord-américain 1927
Épaisseur des courbes 100 pieds
Élévations en pieds au-dessus du niveau moyen de la mer
Ces cartes sont en vente au Bureau de distribution des cartes,
ministère de l'Énergie, des Mines et des Ressources, Ottawa.

Certain names inscribed on this map are not
yet official. Corrections or additions are invited
by the cartographic service and the public to
signal corrections and additions.

Établi en 1965, par la DIRECTION DES LÈVÉS ET DE LA CARTOGRAPHIE,
MINISTÈRE DE L'ÉNERGIE, DES MINES ET DES RESSOURCES. Levés sur le
terrain en 1955. Imprimé en 1961.
La déclinaison magnétique pour 1965 varie de 25°11' Ouest
au centre de la limite Ouest à 27°45' Ouest au centre de la
limite Est. Variation moyenne annuelle 6,4 Est.
Pour une liste complète des signes, voir au verso.



Index to adjoining sheets of National Topographic System
Tableau d'assemblage du Système national de référence cartographique

LAC BIENVILLE
33 P
EDITION 1