

This document was produced
by scanning the original publication.
Ce document est le produit d'une
numérisation par balayage
de la publication originale.

33C

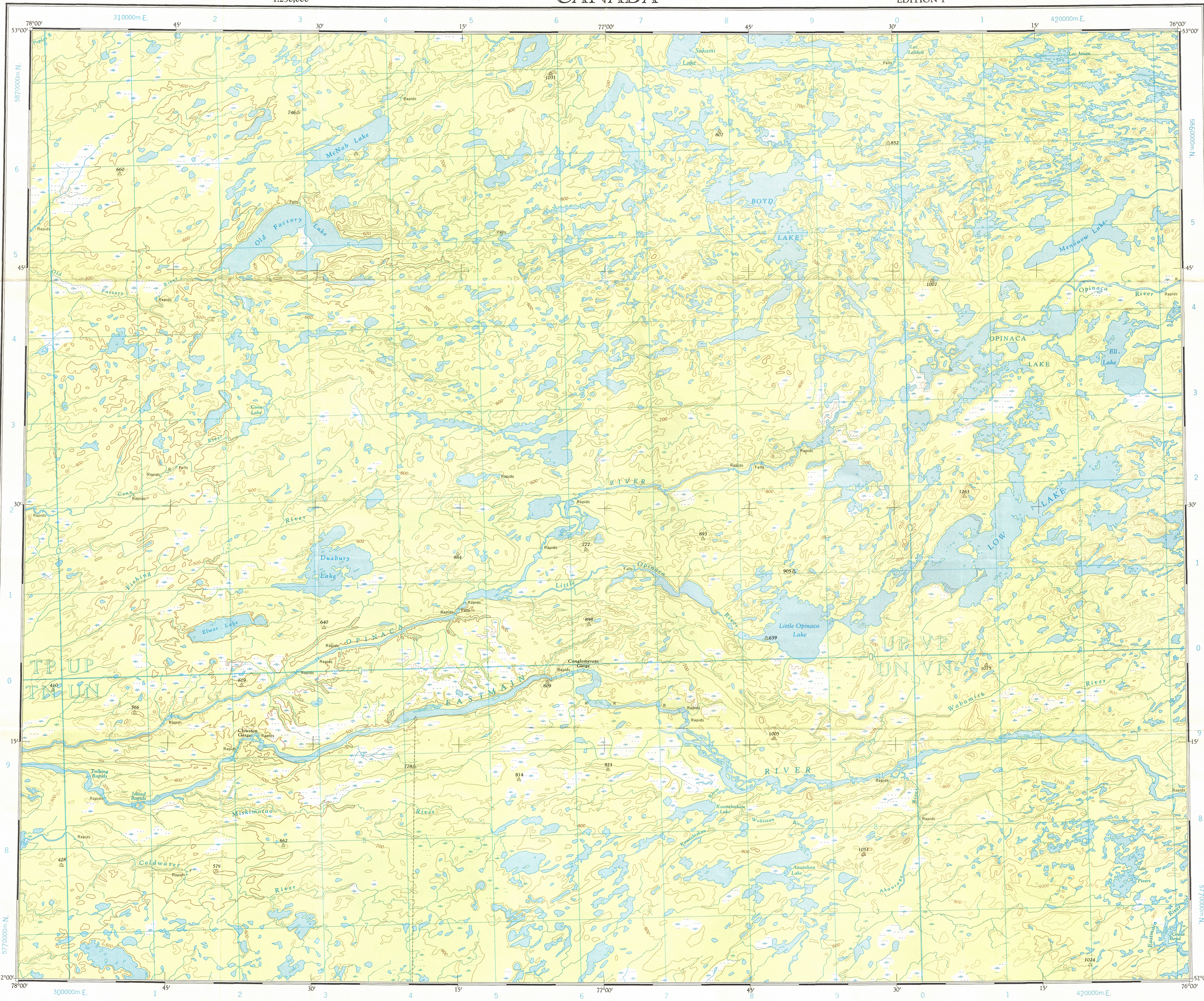
1:250,000

CANADA

EDITION 1

33C

Refer to
this map as:
33C
EDITION 1 ASE
SERIES A 501

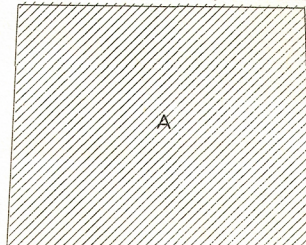


GRID ZONE
DESIGNATION
18U

TO GIVE A REFERENCE TO NEAREST 1000 METRES
EXAMPLE: SURVEY MONUMENT
SQUARE: Read letters of 100,000 m square UP
EASTING: Read number on grid line
immediately to left of point.
Estimate tenths of a square from
this line backward to point.
NORTHING: Read number on grid line
immediately below point.
Estimate tenths of a square from
this line backward to point.
MILITARY GRID REFERENCE
(to nearest 1,000 metres) UP6214
If reporting beyond 10° in any direction
prefix Grid Zone Designation as 18UUP6214

TEN THOUSAND METRE
UNIVERSAL TRANSVERSE MERCATOR GRID
ZONE 18

RELIABILITY DIAGRAM - CROQUIS D'EXACTITUDE



A - Stereo-compiled from 1956 aerial photographs.

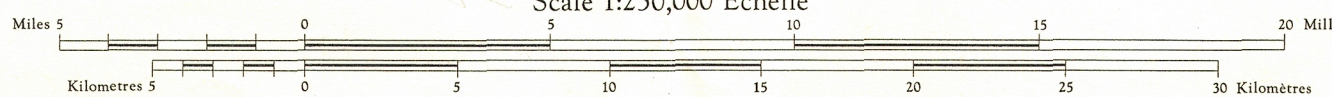
A - Rédigée par stéréorestitution d'après des photographies aériennes prises en 1956.

Compiled, 1962, by the SURVEYS AND MAPPING BRANCH,
DEPARTMENT OF MINES AND TECHNICAL SURVEYS.
Field surveys 1961. Printed 1964.
Magnetic declination 1965 varies from 17°07' westerly at
centre of west edge to 19°27' westerly at centre of east
edge. Mean annual change 3.7' easterly.

Road, dry weather.....Route, temps sec.
Wagon or winter road.....Chemin de terre ou d'hiver.
Trail or portage.....Sentier ou portage.
Town.....Ville.
Village or Settlement.....Village ou hameau.
Post Office.....Bureau de poste.
Horizontal control point.....Point géodésique.
Boundary monument.....Borne frontalière.

OPINACA LAKE
QUÉBEC

Scale 1:250,000 Échelle

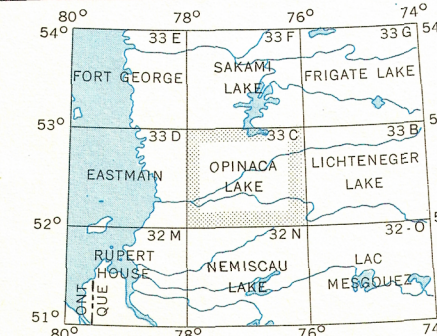


Transverse Mercator Projection
North American Datum 1927 (1956)
Contour Interval 100 feet
Elevations in feet above Mean Sea Level
Copies may be obtained from the Map Distribution Office,
Department of Mines and Technical Surveys, Ottawa.

Projection Transverse de Mercator
Niveau de référence nord-américain, 1927 (1956)
Équidistance des courbes: 100 pieds
Élévations en pieds au-dessus du niveau moyen de la mer
Ces cartes sont en vente au Bureau de distribution des cartes,
ministère des Mines et des Relevés techniques, Ottawa.

Rédigée en 1962 par la DIRECTION DES LEVES ET DE LA
CARTOGRAPHIE, MINISTÈRE DES MINES ET DES RELEVÉS
TECHNIQUES. Levés sur le terrain en 1961. Imprimé en 1964.
La déclinaison magnétique pour 1965 varie de 17°07' Ouest
au centre de la limite Ouest à 19°27' Ouest au centre de la
limite Est. Variation moyenne annuelle 3.7' Est.

Stream.....Cours d'eau
Intermittent or dry.....intermittent ou à sec.
Indefinite.....imprécis.
Rapids; falls.....Rapides; chute.
Marsh or swamp.....Marais ou marécage.
Intermittent lake.....Lac intermittent.
Depression contours.....Courbes de cuvette.
Spot Elevation, in feet.....Repère de nivellement en pieds.....2550.



OPINACA LAKE
33C