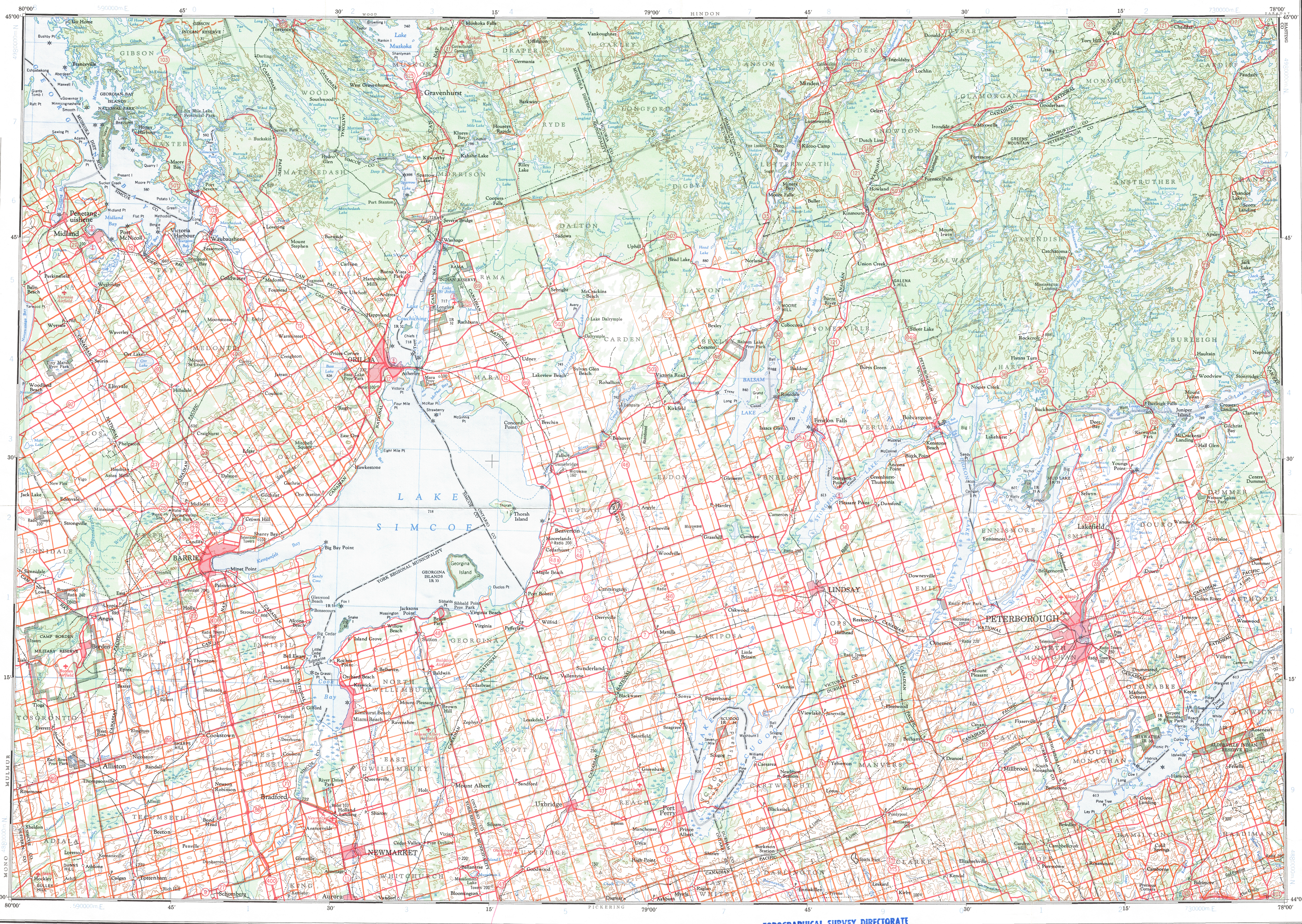


Ce document est le produit d'une numérisation par balayage de la publication originale.



**GRID ZONE IDENTIFICATION**

17 T

TO GIVE A REFERENCE TO ANY POINT ON THE MAP

EXAMPLE: A point on the map is located at 17 T 49 23

TO GIVE A REFERENCE TO ANY POINT ON THE MAP

EXAMPLE: A point on the map is located at 17 T 49 23

TO GIVE A REFERENCE TO ANY POINT ON THE MAP

EXAMPLE: A point on the map is located at 17 T 49 23

Fourth edition map updated by the SURVEYS AND MAPPING BRANCH, DEPARTMENT OF ENERGY, MINES AND RESOURCES, from aerial photographs taken in 1963, 1965, 1966, 1967, 1968, 1969, 1970, 1971, 1972, 1973, 1974.

Magnetic declination 1971 varies from 0°18' westerly at centre of east edge to 10°28' westerly at centre of east edge. Mean annual change 0.7' westerly.

Roads:

- hard surface, all weather..... dual highway..... more than 2 lanes
- hard surface, all weather..... 2 lanes..... less than 2 lanes
- loose or stabilized surface, all weather..... 2 lanes or more..... less than 2 lanes
- loose surface, dry weather.....
- cart track.....
- trail or path.....

FOR COMPLETE REFERENCE SEE REVERSE SIDE

**LAKE SIMCOE**  
ONTARIO

Scale 1:250,000 Échelle 1:250,000

Contours interval 100 feet  
Elevations in feet above Mean Sea Level  
North American Datum 1927  
Projection: Mercator Projection

Copies may be obtained from the Canada Map Office, Department of Energy, Mines and Resources, Ottawa, or your nearest map dealer.

© Canada Copyrights Reserved 1974.

**TOPOGRAPHICAL SURVEY DIRECTORATE**  
**SERVICE TOPOGRAPHIQUE**

DATE 26.03.78

Q.C. APPROVES RELEASE

C.O. APPROUVE

3000's like more is wrong.

Ed 6 to be 7000

15 really 50 m. on map

Quatrième édition mise à jour par la DIRECTION DES LEVÉS ET DE LA CARTOGRAPHIE, MINISTÈRE DE L'ÉNERGIE, DES MINES ET DES RESSOURCES, d'après des photographies aériennes prises en 1963, 1965, 1966, 1967, 1968, 1969, 1970, 1971, 1972, 1973, 1974.

La déclinaison magnétique pour 1971 varie de 0°18' Ouest au centre de la limite Ouest à 10°28' Ouest au centre de la limite Est. Variation moyenne annuelle 0,7' Ouest.

Routes:

- pavée, toute saison..... 2 chaussées séparées..... plus de 2 voies
- pavée, toute saison..... 2 voies..... moins de 2 voies
- gravier aggloméré, toute saison..... 2 voies ou plus..... moins de 2 voies
- de gravier période sèche.....
- de terre.....
- sentier ou portage.....

Final inspection note should read 20 M.

Done by JLC

Index to adjoining maps of National Topographic System

Tableau d'assemblage du Système national de référence cartographique

LAKE SIMCOE  
31D  
EDITION 5