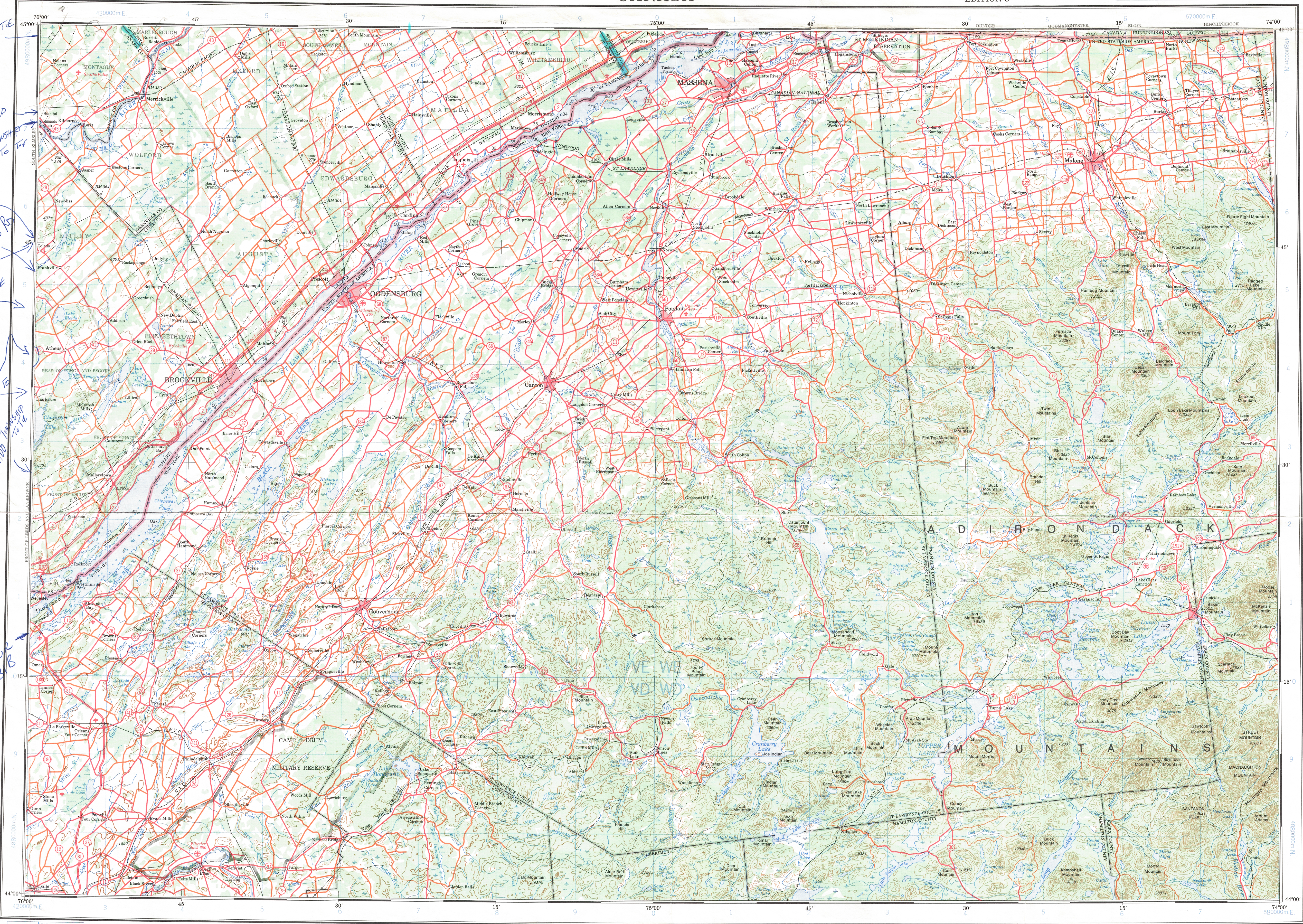


THEY
WHERE POSSIBLE
8

MAINT
DOES NOT
TIE
No "DRP
ADD TOWNSHIP
BOY TO
No "F" Rd
No "G" Rd
POWER LINE
MISSING
ADD TO TIE
Most
BUSH DOES
NOT TIE
DIGITIZE
CONTOUR TO
TIE
ADD TOWNSHIP
TO TIE
CLOSE
CONTOUR
ON 31 B



CONVERSION SCALE FOR ELEVATIONS
Feet to Meters
0 100 200 300 400 500 600 700 800 900 1000
Meters to Feet
0 300 600 900 1200 1500 1800 2100 2400 2700 3000

This document was produced
by scanning the original
map and digitizing the
information.

OGDENSBURG
CANADA - UNITED STATES OF AMERICA

Scale 1:250,000 Échelle 1:250,000

Contours Interval 100 Feet
Elevations in Feet above Mean Sea Level
North American Datum 1927
Projection: Mercator Projection

Copies may be obtained from the Canada Map Office,
Department of Energy, Mines and Resources, Ottawa,
or your nearest map dealer.

Routes:
paved, toute saison: 2 chaussées d'arpente plus de 2 voies
pavée, toute saison: 2 voies moins de 2 voies
gravier aggloméré, toute saison: 2 voies ou plus moins de 2 voies
de gravier période sèche
de terre
sentier ou portage

ROADS:
hard surface, all weather: dual highway more than 2 lanes
hard surface, all weather: 2 lanes less than 2 lanes
loose or stabilized surface, all weather: 2 lanes or more less than 2 lanes
loose surface, dry weather: car track

TO HAVE A REFERENCE TO NEAREST 100 METERS
UNITS: METERS
SQUARE: 100 meters x 100 meters
EASTING: East number on grid line immediately to left of point
NORTHING: East number on grid line immediately above point
MAGNETIC DECLINATION: 1973 varies from 12°24' westerly at centre of west edge to 14°18' westerly at centre of east edge. Mean annual change 0.1 westerly.

INDEX TO ADJOINING MAPS OF THE NATIONAL TOPOGRAPHIC SYSTEM
Tableau d'assemblage du Système national de référence cartographique

AMG No. 18-11
SERIES 9501

OGDENSBURG
EDITION 3