

This document was produced
by scanning the original publication.
Ce document est le produit d'une
numérisation par balayage
de la publication originale.

13 F

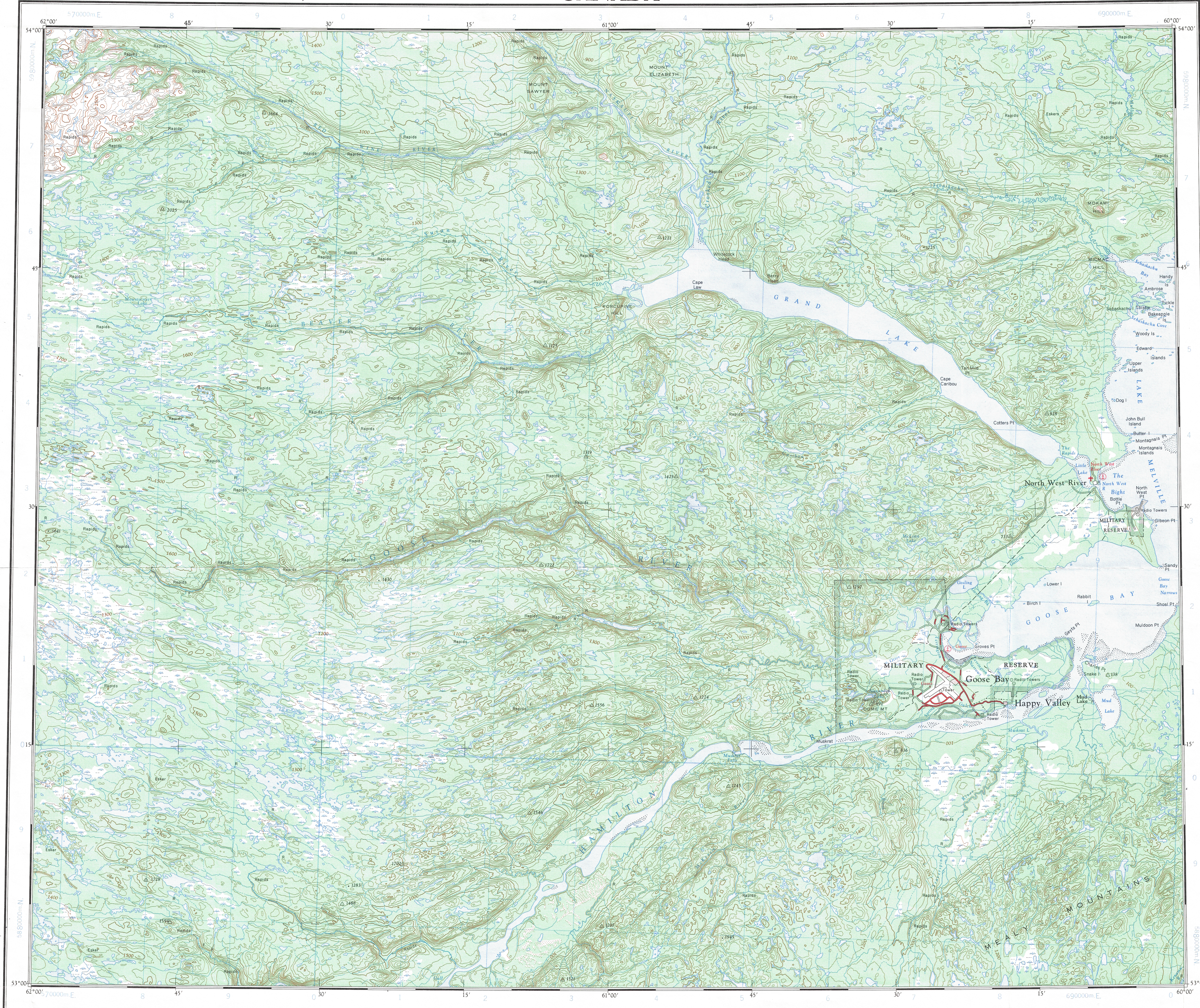
1:250,000

CANADA

EDITION 1

13 F

Refer to
this map as:
13 F
EDITION 1 ASE
SERIES A 501

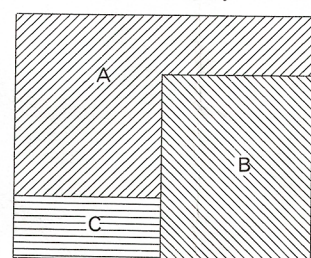


TOPOGRAPHICAL SURVEY DIRECTORATE
SERVICE TOPOGRAPHIQUE
DATE 2-05-90
Q.C. APPROVES RELEASE
L.Q. APPROUVE

GRID ZONE
DESIGNATION
20 U
59 NQ PO PQ
NP PP PP
6 7
TO GIVE A REFERENCE TO NEAREST 1000 METRES
EXAMPLE: RADIO TOWER
SQUARE: Read letters of 100,000 m. square
EASTING: Read number on grid line
immediately to left of point
Estimate tenths of a square from
this line eastward to point
NORTHING: Read number on grid line
immediately below point
Estimate tenths of a square from
this line northward to point
MILITARY GRID REFERENCE
Its nearest 1,000 metres
PQ7707
If reporting beyond 10° in any direction,
prefix Grid Zone Designation as: 20UPQ7707

TEN THOUSAND METRE
UNIVERSAL TRANSVERSE MERCATOR GRID
ZONE 20

RELIABILITY DIAGRAM - CROQUIS D'EXACTITUDE



A - Stereo compiled from 1951 aerial photographs.
B - Large scale topographic maps, photogrammetric 1958-1960.
C - Large scale topographic maps, photogrammetric 1962.
A - Rédigé par stéréostitution d'après des photographies aériennes prises en 1951.
B - Cartes topographiques à grande échelle (photogramétrique: 1958-1960)
C - Cartes topographiques à grande échelle (photogramétrique: 1962)

Compiled 1963, by the SURVEYS AND MAPPING BRANCH,
DEPARTMENT OF MINES AND TECHNICAL SURVEYS.
Field surveys 1959. Printed 1965.
Magnetic declination 1965 varies from 33°40' westerly at
centre of west edge to 33°00' westerly at centre of east
edge. Mean annual change 4.0' easterly.

Some names on this map are not yet official.
Corrections or additions are invited by the
Surveys and Mapping Branch.

GOOSE BAY
NEWFOUNDLAND

Certains noms inscrits sur cette carte ne sont
pas encore officiels. La Direction des levés et
de la cartographie saurait gré au public de lui
signaler corrections et additions.

Rédigée en 1963 par la DIRECTION DES LEVÉS ET DE LA
CARTOGRAPHIE, MINISTÈRE DES MINES ET DES RELEVÉS
TECHNIQUES. Levés sur le terrain en 1959. Imprimée en 1965.
La déclinaison magnétique pour 1965 varie de 33°40' Ouest au
centre de la limite Ouest à 33°00' Ouest au centre de la limite
Est. Variation moyenne annuelle 4.0' Est.

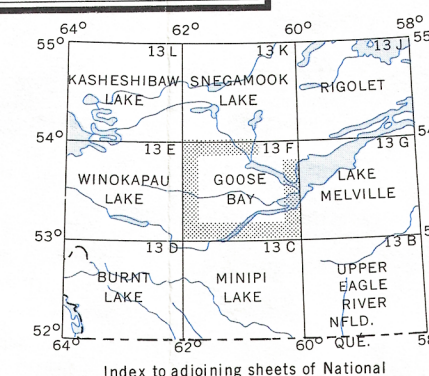
Road
hard surface, all weather, paved, toute saison.....
loose surface, all weather, de gravier, toute saison.....
wagon, cart track, chemin de terre.....
Railway, normal gauge.....
Depression contours.....
Spot Elevation in feet.....
Power transmission line.....

Scale 1:250,000 Échelle
Miles 5 10 15 20 25 30
Kilometres 5 10 15 20 25 30
Transverse Mercator Projection
North American Datum 1927
Contour Interval 100 feet
Elevations in feet above Mean Sea Level

Copies may be obtained from the Map Distribution Office,
Department of Mines and Technical Surveys, Ottawa.

Ces cartes sont en vente au Bureau de distribution des cartes,
ministère des Mines et des Relevés techniques, Ottawa.

Town.....
Village or Settlement.....
Post Office.....
Church.....
School.....
Boundary monument.....
Horizontal control point.....
Stream
Intermittent or dry.....
Intermittent lake.....
Rapids; falls.....
Marsh or swamp.....
Lighthouse.....
Phare.....
Airport.....
Base of hydrations.....



Index to adjoining sheets of National
Topographic System
Tableau d'assemblage du Système
National de Référence Cartographique

GOOSE BAY
13 F
EDITION 1

Reprint