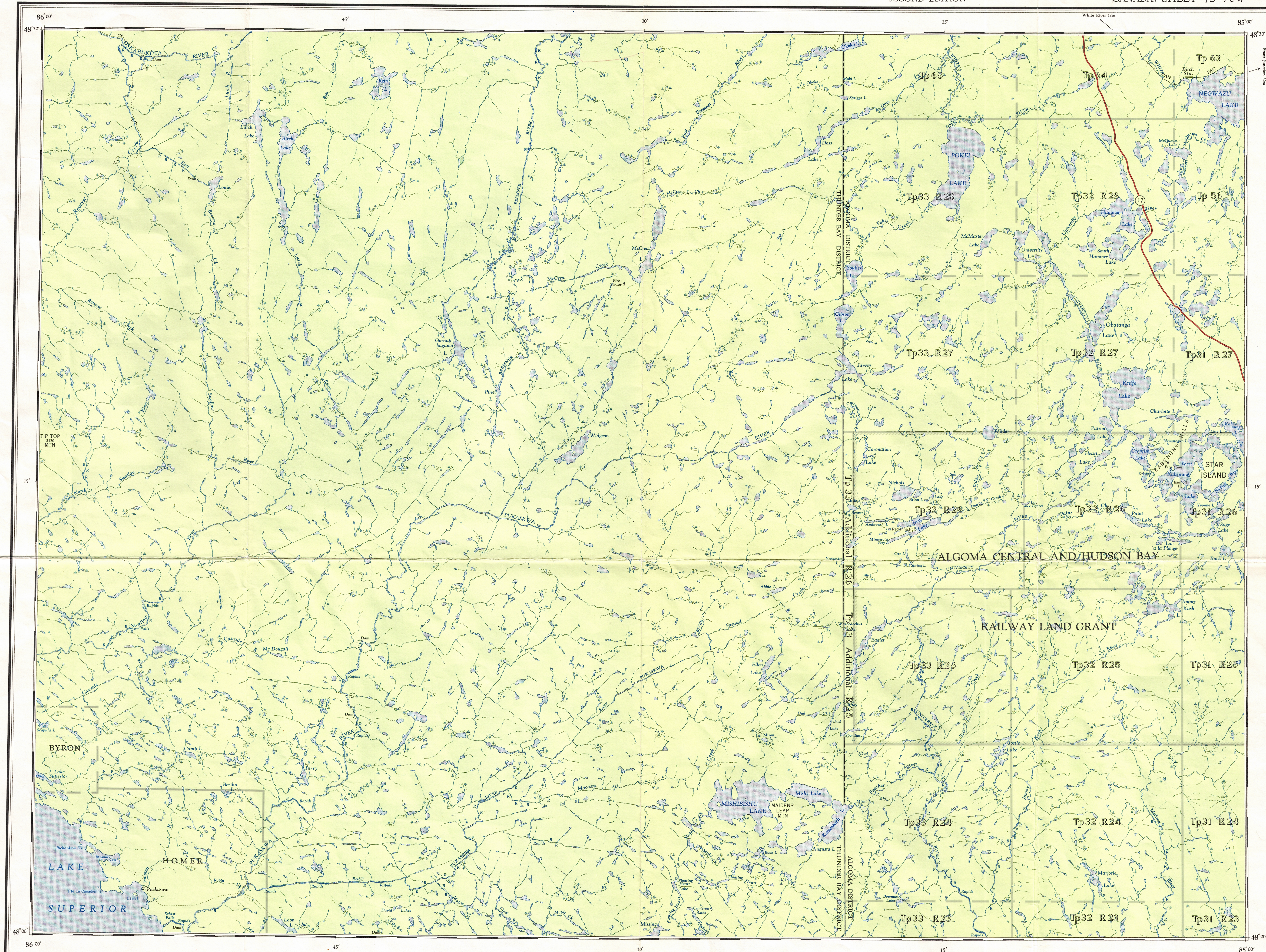
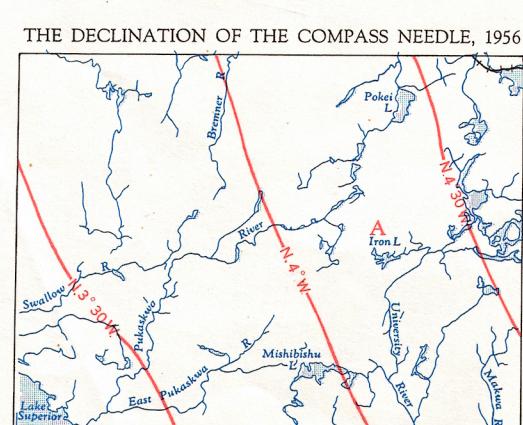


This document was produced  
scanning the original publication.



Drawn and Printed by the Army Survey Establishment, R.C.E.  
Compiled from information and aerial photographs taken  
in 1949 and supplied by the Department of Lands and Forests,  
Province of Ontario.  
Published 1956.



The declination of the compass needle at any place along a red line, is the declination given on that red line. At other places the declination is between those given on the neighbouring red lines; thus at the place marked A, the declination is between N.  $4^{\circ}$  W. and N.  $4^{\circ}$  30' W. The westerly declinations of the compass needle are decreasing 3.5 minutes annually.

## REFERENCE

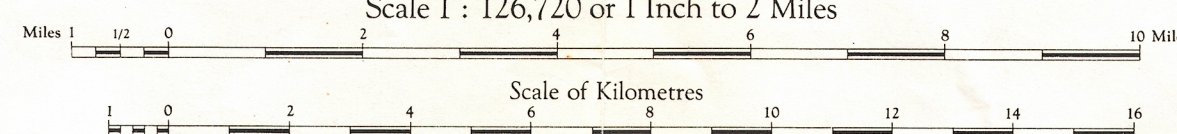
	Marker
Boundary, International .....	
" " Province .....	
" " County or District .....	
" " Township or Parish .....	
" " Roman Catholic Diocese, Military, etc.	
Road, Road Surface, All Weather .....	More than 2 Lanes
" " " " " " " " " " " "	2 Lanes Heavy Mix Less than 2
" " " " " " " " " " " "	2 Lanes With or More
" " " " " " " " " " " "	All Weather Dry Weather
" " " " " " " " " " " "	Less Surface, Less than 2 Lanes
Cart Track, Trail .....	Cart Track  Trail
Railway, Normal Gauge, Multiple Track .....	Single  Duplex
" " Normal Gauge, Single Track .....	Single  Single

PRELIMINARY MAP

PUKASKWA RIVER

ONTARIO


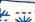
Scale 1 : 126,720 or 1 Inch to 2 Miles




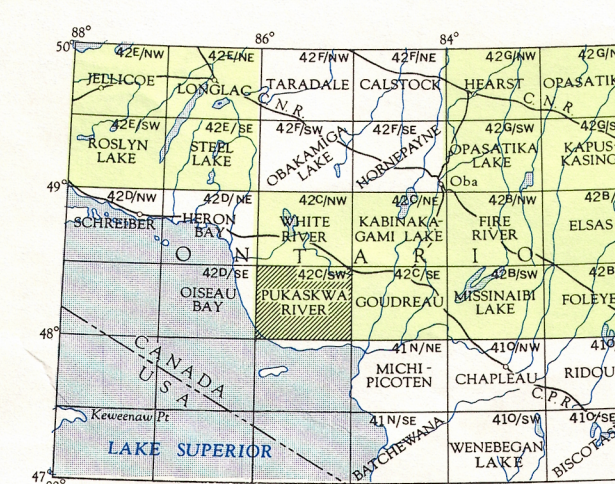
Universal Transverse Mercator Projection  
North American Datum 1927

On future editions of this map, planimetric adjustments will be made as additional horizontal control becomes available.

## R E F E R E N C E

Telephone or Telegraph, Trunk Route .....	— — — — —
Power Transmission Line .....	— — — — —
Stream, Intermittent .....	— — — — —
Falls or Rapids .....	
Scurry or Marsh .....	— — — — —
Bridge .....	
Dam .....	— — — — —
House, Building .....	— — — — —
School .....	— — — — —
Church .....	— — — — —
Post Office .....	— — — — —
Bench Mark .....	— — — — —
Spot Elevation, (in Feet) .....	— — — — —
Mine or Pit .....	— — — — —
Fence, Unlocated .....	— — — — —


  
 I  
 +  
 BM  
 862  
 1,092  
 X



NOTE: On the above index the sheets published are shown tinted green.

42 c/sw