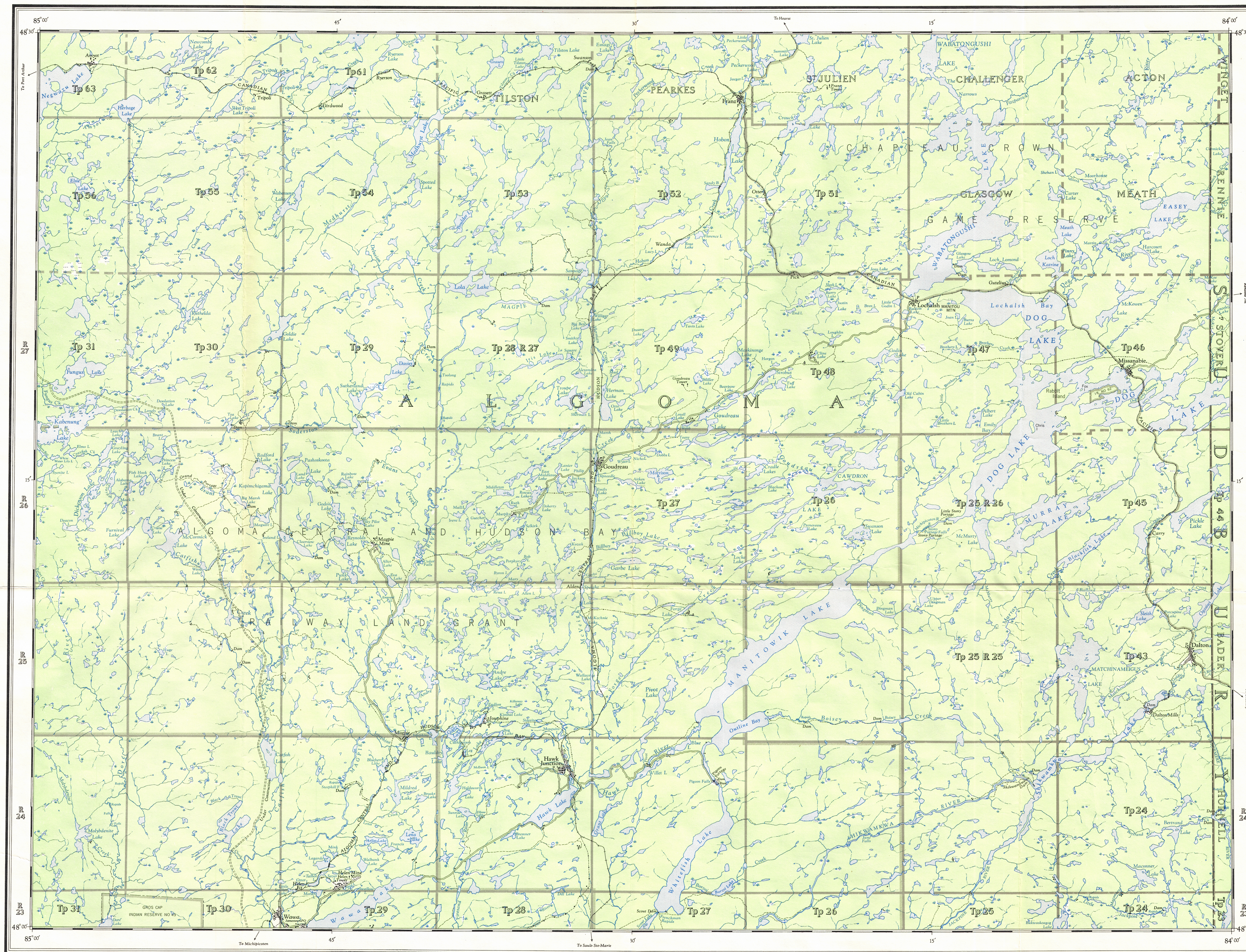
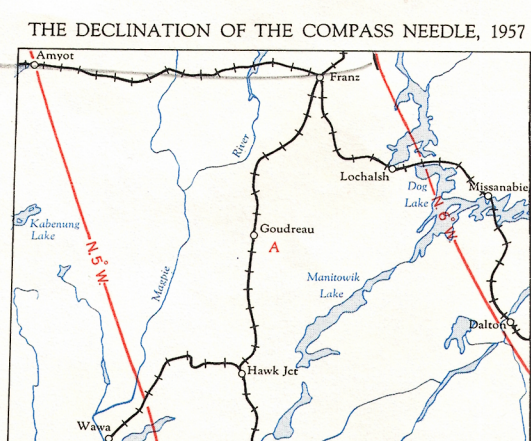


Ce document est le produit d'une numérisation par balayage de la publication originale.

This document was produced by scanning the original publication.



Drawn and Printed by the Army Survey Establishment, R.C.E.
Compiled from information and aerial photographs taken
in 1946 and supplied by the Department of Lands and Forests,
Province of Ontario.
Published 1955.



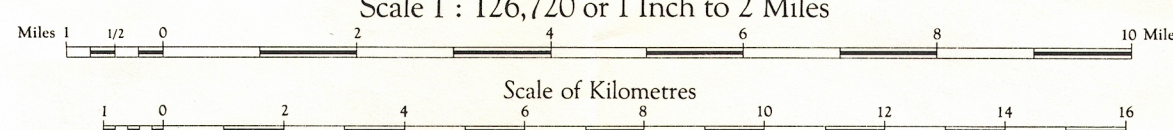
The declination of the compass needle at any place along a red line
is the declination given on that red line. At other places the declination
is between those given on the neighbouring red lines; thus at the
place marked A, the declination is between 1° 5' W and 1° 4' W.
The westerly declinations of the compass needle are decreasing
15 minutes annually.

REFERENCE

Boundary, International	—
Province	—
County or District	—
Township or Parish	—
Railway, Active, Military, or	—
Road, Hard Surface, All Weather	—
Hard Surface, All Weather	—
Loose Surface, All Weather	—
Loose Surface, Less than 2 Lanes	—
Cart Track, Trail	—
Railway, Normal Gauge, Multiple Track	—
Normal Gauge, Single Track	—
Abandoned, or Under Construction	—

GOUDREAU
ONTARIO

Scale 1 : 126,720 or 1 Inch to 2 Miles



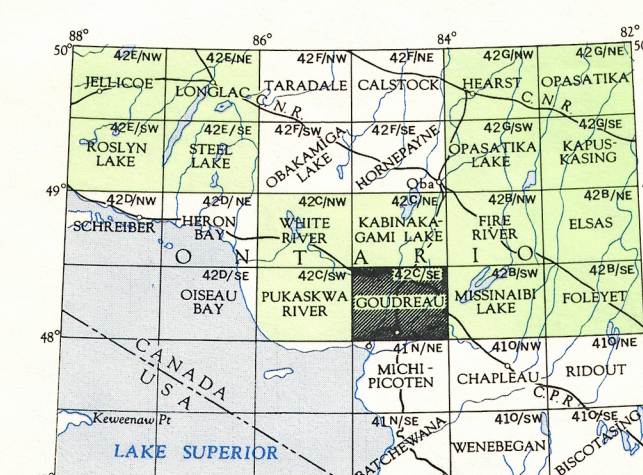
Universal Transverse Mercator Projection
North American Datum 1927

On future editions of this map,
planimetric adjustments will
be made as additional horizontal
control becomes available.

REFERENCE

Telephone or Telegraph, Trunk Route	—
Power Transmission Line	—
Sewer, Intersecting	—
Fall or Rapids	—
Squag or Marsh	—
Bridge	—
Dam	—
House, Building	—
School	—
Church	—
Post Office	—
Beach Mark	—
Spot Elevation, (in Feet)	—
Mine or Pit	—
Forest, Unclassified	—

Copies may be obtained from the Map Distribution Office,
Department of Mines and Technical Surveys, Ottawa.



NOTE: On the above index the sheets published are shown in red.

SHEET 42 C/SE

No black Stipple on previous printing

Reprint
Oct 23-70

42 C/SE