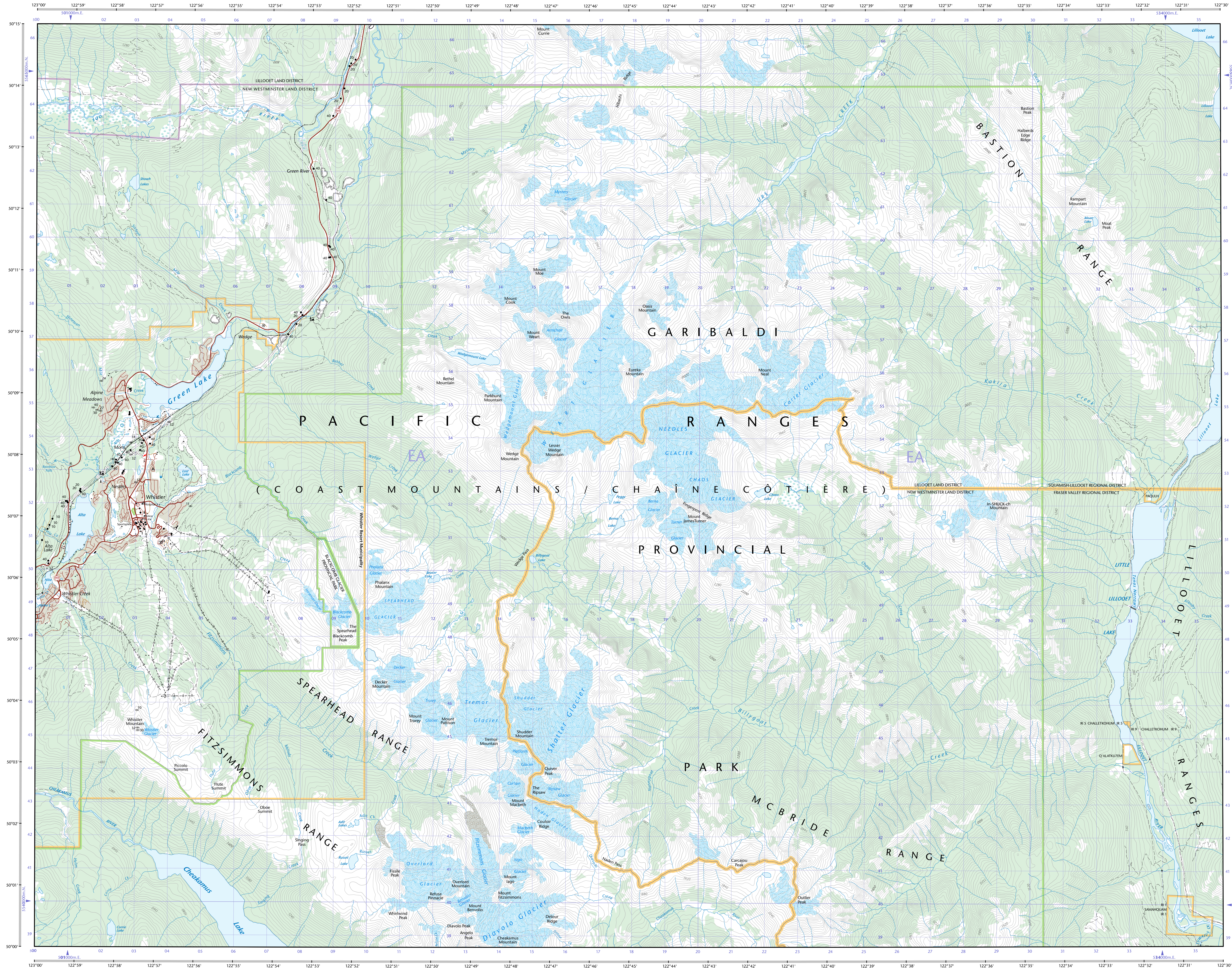
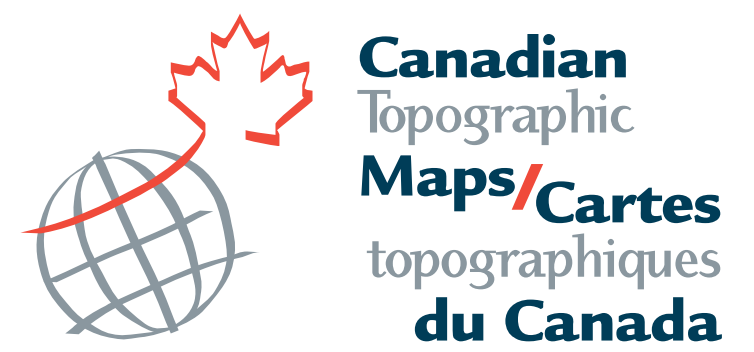
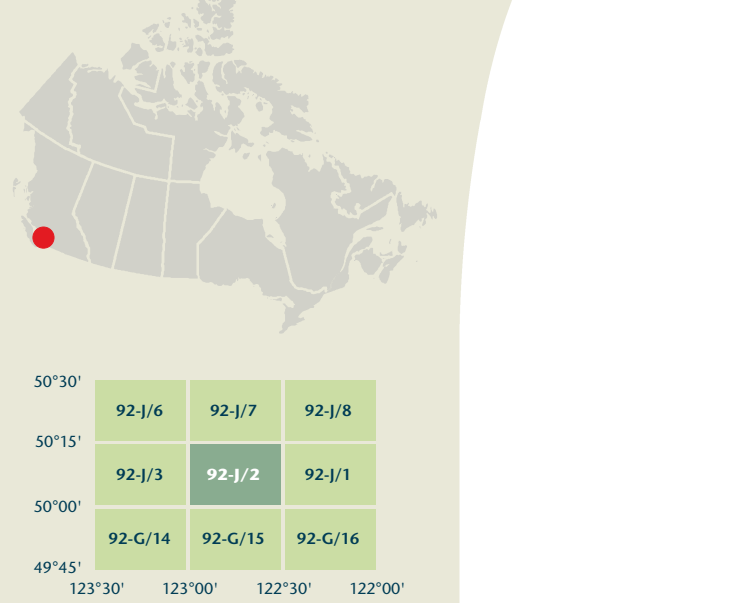




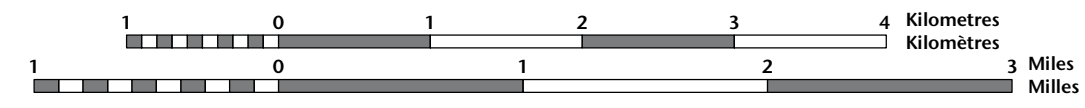
**WHISTLER**

British Columbia  
Colombie-Britannique



## WHISTLER

British Columbia  
Colombie-Britannique

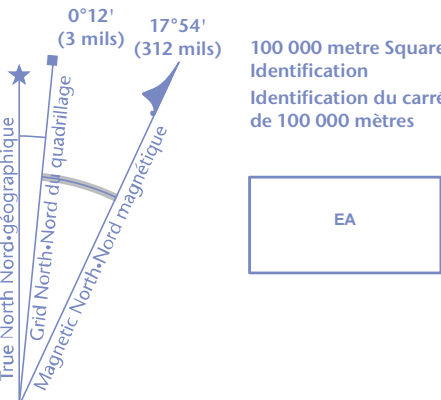


centimetre on the map represents 500 metres on the ground  
Contour Interval: 40 metres  
Elevations in metres above Mean Sea Level  
Contours on or surrounding glaciers are approximate

Use diagram only to obtain numeric values  
Approximate Mean Declination 2009  
for centre of map  
Annual change decreasing 12.9'

N'utiliser le diagramme que pour obtenir  
les valeurs numériques  
Déclinaison moyenne approximative  
au centre de la carte en 2009  
Variation annuelle décroissante 12.9'

For magnetic declination information,  
visit: <http://gsc.nrcan.gc.ca/geomag>  
Pour information sur la déclinaison magnétique  
visitez : <http://cgsc.nrcan.gc.ca/geomag>

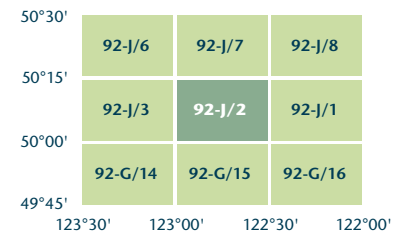


Transverse Mercator Projection  
Projection transverse de Mercator  
North American Datum 1983  
Système de référence nord-américain 1983

1000 metre Universal Transverse  
Mercator Grid  
**Zone 10**

Quadrillage universel transverse  
Designation  
**10U**

A tutorial on how to estimate position from the UTM grid can be found at: <http://maps.NRCCan.gc.ca/topo101>  
Consultez le tutoriel sur la manière d'évaluer la position à partir de la grille UTM sur : <http://cartes.NRCCan.gc.ca/topo101>



Printed map / Carte imprimée  
Cat. no. / No de cat.  
M116-2/092J02  
ISSN 1915-884X  
ISBN 978-0-660-63933-8

**92-J/2**  
SCALE 1:50 000  
ÉCHELLE 1:50 000  
EDITION 04 VERSION 02  
ÉDITION 04 VERSION 02  
SÉRIES A721  
SÉRIE A721

**Digital map / Carte numérique**  
Cat. no. / No de cat.  
M116-2/092J02-PDF  
ISSN 1915-8858  
ISBN 978-0-662-06116-8