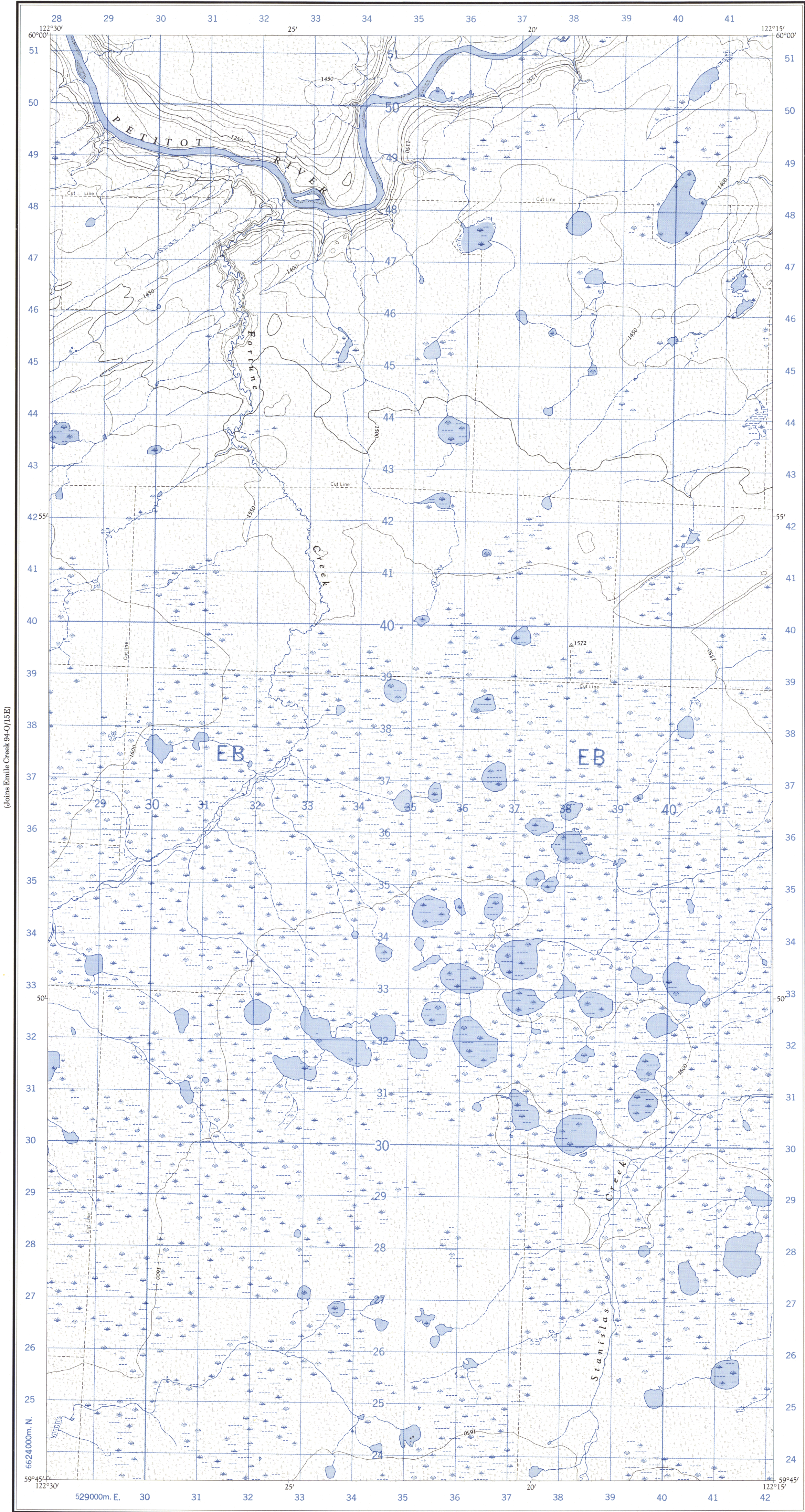
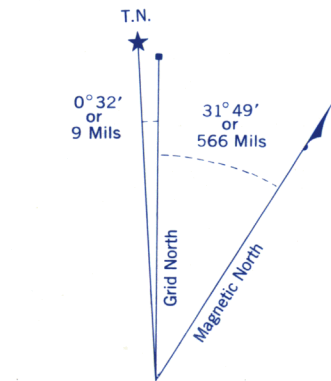


Refer to
this map as:

94 O/16 W
EDITION 1 ASE
SERIES A 721



(Joins Stanislas Creek 94-O/16E)



Use diagram only to obtain numerical values.
APPROXIMATE MEAN DECLINATION 1965
FOR CENTRE OF MAP
Annual change decreasing 4.4'

100,000 M. SQUARE IDENTIFICATION	
GRID ZONE DESIGNATION 10 V	EB
TO GIVE A REFERENCE TO NEAREST 100 METRES	
EXAMPLE: SURVEY MONUMENT	
EASTING: Read number on grid line immediately to left of point Estimate tenths of a square from this line eastward to point.	38 1 381
NORTHING: Read number on grid line immediately below point Estimate tenths of a square from this line northward to point.	39 6 396
MILITARY GRID REFERENCE	381396
Nearest similar grid reference 100,000 metres (about 63 miles)	

ONE THOUSAND METRE
UNIVERSAL TRANSVERSE MERCATOR GRID
ZONE 10

Compiled, 1963, by the SURVEYS AND MAPPING BRANCH,
DEPARTMENT OF MINES AND TECHNICAL SURVEYS,
from aerial photographs taken in 1956-57. Field surveys 1951 and
1960. Printed 1966.

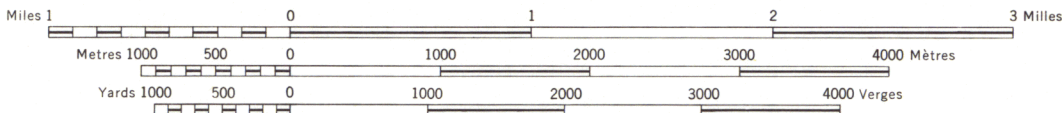
Copies may be obtained from the Map Distribution Office,
Department of Mines and Technical Surveys, Ottawa.

(Joins Trail Lake 94-O/9W)

STANISLAS CREEK

PEACE RIVER DISTRICT
BRITISH COLUMBIA

SCALE 1:50,000 ÉCHELLE



CONTOUR INTERVAL 50 FEET
Elevations in Feet above Mean Sea Level
North American Datum 1927
Transverse Mercator Projection

ÉQUIDISTANCE DES COURBES 50 PIEDS
Élévations en pieds au-dessus du niveau moyen de la mer
Réseau géodésique nord-américain unifié (1927)
Projection transverse de Mercator

Rédigée en 1963, par la DIRECTION DES LEVÉS ET DE LA CARTOGRAPHIE,
MINISTÈRE DES MINES ET DES RELEVÉS TECHNIQUES, d'après des photo-
graphies aériennes prises en 1956-57. Levés sur le terrain en 1951 et 1960.
Imprimée en 1966.

Ces cartes sont en vente au Bureau de distribution des cartes,
ministère des Mines et des Relevés techniques, Ottawa.

Building	•	Bâtiment	•	Barn	—	Grange	—
School	•	École	•	Post Office	•	Bureau de poste	•
Church	•	Eglise	•	Cemetery	•	Cimetière	•
Lighthouse	•	Phare	•				
River with bridge	—	Rivière avec pont	—				
Stream, intermittent or dry	—	Cours d'eau intermittent ou à sec	—				
Lake intermittent, indefinite	—	Lac intermittent, rive imprécise	—				
Marsh or Swamp	—	Marais ou marécage	—				
Depression contours	—	Courbes de cuvette	—				