



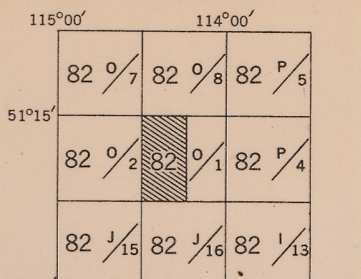
CANADA

DEPARTMENT OF NATIONAL DEFENCE
ARMY SURVEY ESTABLISHMENT

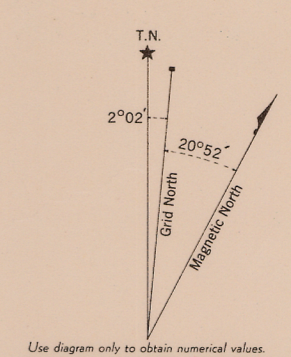
REFERENCE

- Roads:
 - hard surface, heavy duty 3 or more lanes Part completed
 - hard surface, heavy duty 2 lanes 2 lanes
 - hard surface, medium duty 3 or more lanes 2 lanes
 - loose surface, graded and drained 3 or more lanes Not less than 14 ft wide
- Other Roads:
 - Private Road Floor condition
- Trail:
 - Railway, double track Station
 - single track Stop Siding
 - abandoned
 - narrow gauge or electric
- Bridge, underpass or overpass
- Boundaries, International:
 - Provincial
 - County
 - Reservation Indian, Military, Nat. or Prov. Parks, etc.
- Electric Power Line on Steel Towers on Wood Poles
- Telephone, trunk route
- Triangulation Station
- Boundary or Survey Monument
- Bench Mark B.M.
- Spot Height, (in feet) 357.1
- House, Barn
- Buildings
- Mill or Factory, small
- School
- Church
- Post Office
- Telephone Exchange
- Mine or Open Cut
- Cemetery or Churchyard
- Quarry
- Sand or Gravel Pit
- Cliff
- Cutting
- Embankment, Dump, etc.
- Lighthouse
- Wharf or Pier
- Foreshore Flats
- Swamp or Marsh
- Lake or Slough, non permanent
- Glacier or Snowfield
- Stream, intermittent
- Contours, elevation:
 - depression
 - 500 475 450
 - 525
 - 500
- Wooded Areas, heavy
- light
- Camera Station

INDEX TO ADJOINING SHEETS



See "Index to Maps Available" for sheets published.



Use diagram only to obtain numerical values.
APPROXIMATE MEAN DECLINATION 1950
FOR CENTRE OF SHEET
Annual magnetic change: Westwesterly

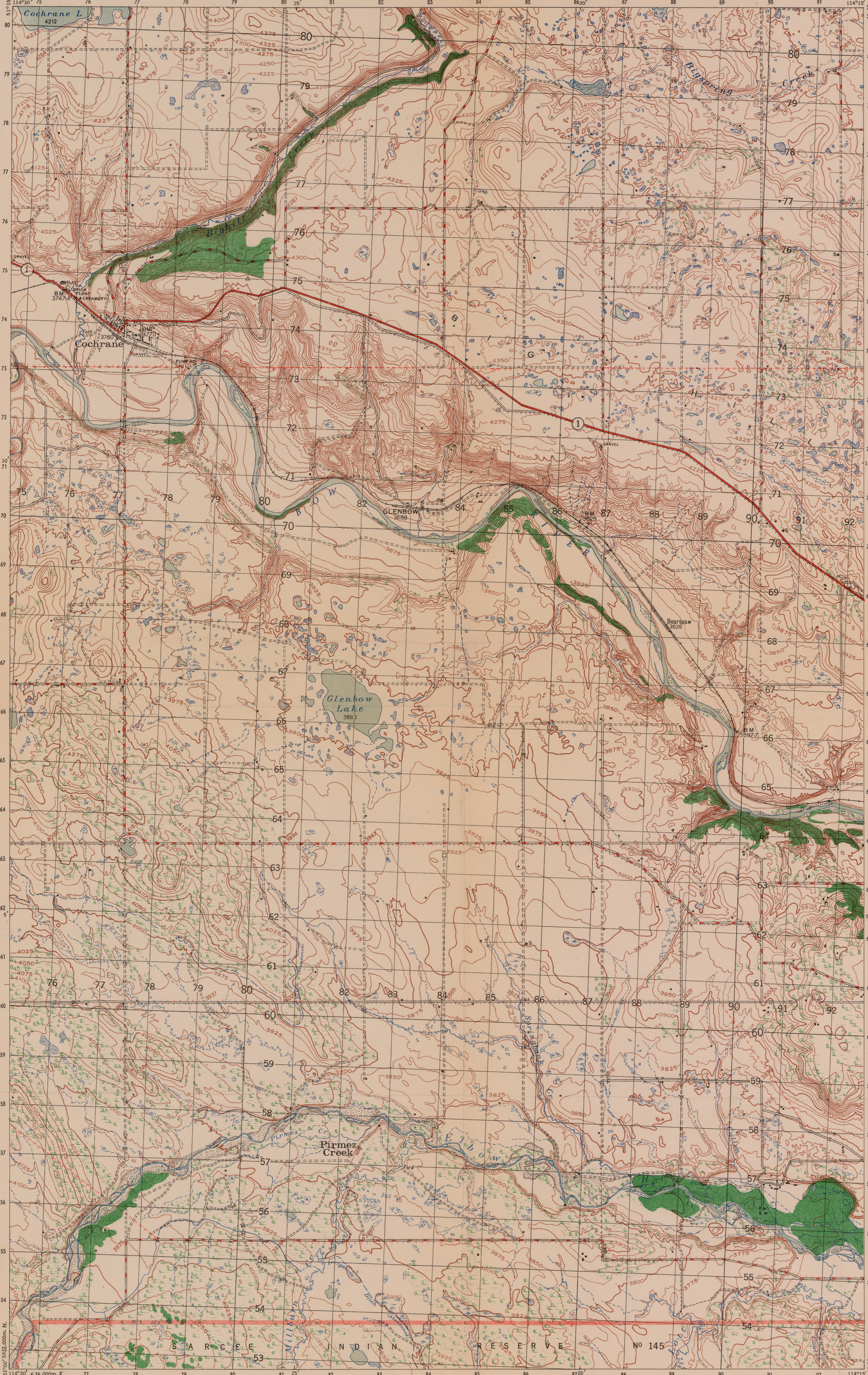
TO GIVE GRID REFERENCE ON THIS SHEET
FIGURES, IGNORE THE SMALLER FIGURES PRINTED AROUND THE MARGIN OF THE MAP. THESE ARE FOR FINDING THE FULL CO-ORDINATES.
USE ONLY THE LARGER FIGURES PRINTED IN THE MARGIN OR ON THE FACE OF THE MAP, viz. 530

POINT SCHOOL	
FOR STANDARD MILITARY GRID REFERENCE	
East	North
Take West edge of square in which point lies, and read the figure printed opposite this line on North or South margin or on the line itself on the face of the map.	Take South edge of square in which point lies, and read the figure printed opposite this line on East or West margin or on the line itself on the face of the map.
83	70
836	706
STANDARD MILITARY GRID REFERENCE 836706 (To nearest 100 Metres)	
Nearest similar grid reference: 100,000 Metres (Approximately 63 Miles)	

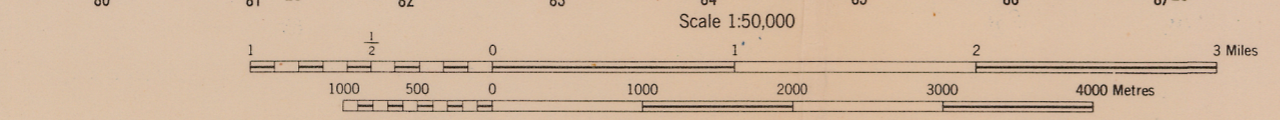
ONE THOUSAND METRE
UNIVERSAL TRANSVERSE MERCATOR GRID
ZONE 11

CALGARY
82 1/2 WEST HALF
SECOND EDITION

CONTOUR INTERVAL 25 FEET
All Elevations in Feet above Mean Sea Level



Compiled drawn and printed at the office of the Surveyor General 1931
Revised for the second edition by the Army Survey Establishment
R.C.E. 1954 with Aerial photography by the RCAF 1948.
Converted from the second edition of the 1:63360 map to 1:50000
by the A.S.E. 1951



Scale 1:50,000
3 Miles
CONVERSION SCALE FOR ELEVATION
Metres

NOTE: Copies of this map required for official purposes may be obtained from the Army Survey Est., AHQ, Ottawa.