



CANADA  
DEPARTMENT OF NATIONAL DEFENCE  
ARMY SURVEY ESTABLISHMENT

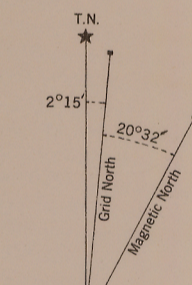
REFERENCE

Roads:	3 or more lanes	Part completed
hard surface, heavy duty	2 lanes	Route No.
hard surface, heavy duty	3 or more lanes	2 lanes
hard surface, medium duty	3 or more lanes	Not less than 14 ft. wide
loose surface, graded and drained	3 or more lanes	Not less than 14 ft. wide
Other Roads:		Other Road
Private Road		Private Road
Trail		Trail
Railway, double track		Station
single track		Stop
abandoned		Siding
narrow gauge or electric		
76 Bridge, underpass or overpass		
Boundaries, International		
Provincial		
County		
Reservation, Indian		
Military, Nat. or Prov. Parks, etc.		
75 Electric Power Line		
Telephone, trunk route		
Triangulation Station		
Boundary or Survey Monument		
Bench Mark		
Spot Height, (in feet)		
House, Barn		
Buildings		
Mill or Factory, small		
School		
73 Church		
with conspicuous Tower or Spire		
Post Office		
Telephone Exchange		
Mine or Open Cut		
Cemetery or Churchyard		
72 Quarry		
Sand or Gravel Pit		
Cliff		
Cutting		
71 Embankment, Dump, etc.		
Lighthouse		
Wharf or Pier		
Foreshore Flats		
Swamp or Marsh		
70 Lake or Slough, non permanent		
Glacier or Snowfield		
Stream, intermittent		
Contours, elevation		
depression		
Wooded Areas, heavy		
light		
Camera Station		

INDEX TO ADJOINING SHEETS

118°00'	114°00'
82 7/8	82 7/8
82 7/8	82 7/8
82 7/8	82 7/8
82 7/8	82 7/8
82 7/8	82 7/8

See "Index to Maps Available" for sheets published.



Use diagram only to obtain numerical values. APPROXIMATE MEAN DECLINATION 1950 FOR CENTRE OF SHEET. Annual magnetic change 4.5 westerly.

TO GIVE GRID REFERENCE ON THIS SHEET FIGURES, IGNORE THE SMALLER FIGURES PRINTED around the margin of the map. These are for finding the full co-ordinates. USE ONLY THE LARGER FIGURES PRINTED IN THE MARGIN OR ON THE FACE OF THE MAP. Viz: 700

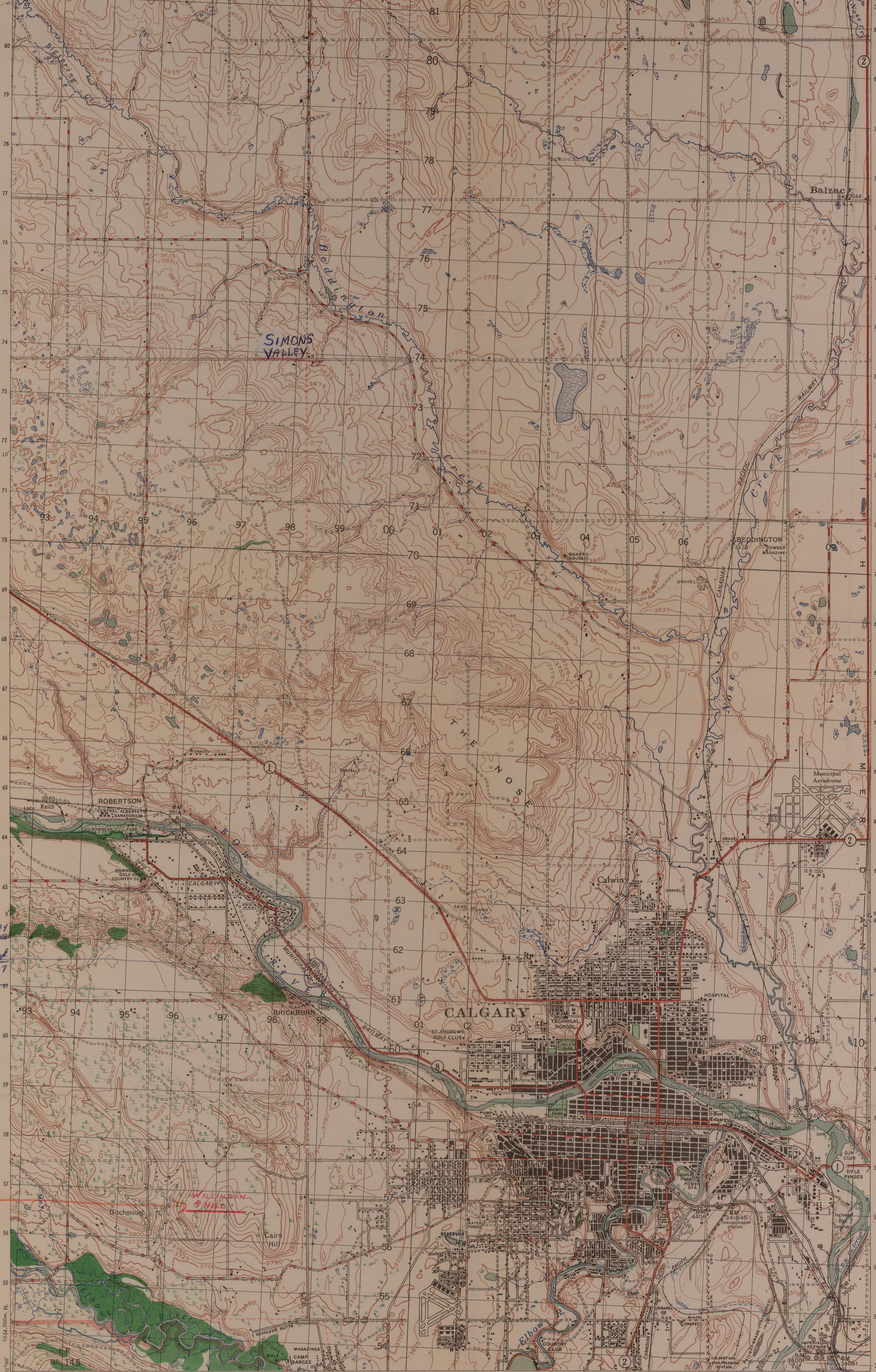
POINT		SCHOOL	
FOR STANDARD MILITARY GRID REFERENCE			
East	North	East	North
Take West edge of square in which point lies, and read the figure printed opposite this line on North or South margin or on the line itself on the face of the map. (Ignore north margin.)	Take South edge of square in which point lies, and read the figure printed opposite this line on East or West margin or on the line itself on the face of the map. (Ignore north margin.)	Take West edge of square in which point lies, and read the figure printed opposite this line on North or South margin or on the line itself on the face of the map. (Ignore north margin.)	Take South edge of square in which point lies, and read the figure printed opposite this line on East or West margin or on the line itself on the face of the map. (Ignore north margin.)
99	57	99	57
7	7	7	7
East 997	North 577	East 997	North 577

STANDARD MILITARY GRID REFERENCE 997577 (To nearest 100 Metres). Nearest similar grid reference 100,000 Metres (Approximately 63 Miles).

ONE THOUSAND METRE UNIVERSAL TRANSVERSE MERCATOR GRID ZONE 11

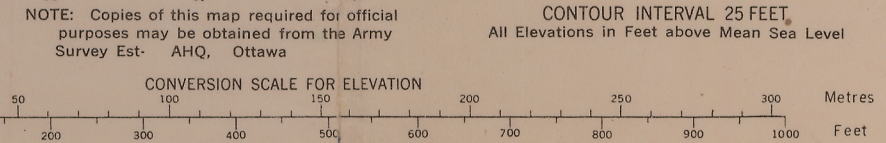
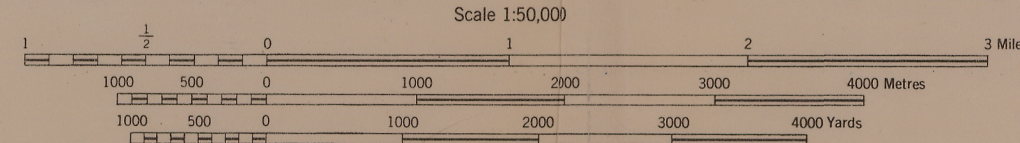
CALGARY 82 1/4 EAST HALF SECOND EDITION

CONTOUR INTERVAL 25 FEET. All Elevations in Feet above Mean Sea Level



Montgomery P.O. changed to Calgary by P.O. Post Alta

Compiled drawn and printed at the office of the Survey General 1931. Revised for the second edition by the Army Survey Establishment R.C.E. 1950 with Aerial photography by the RCAF 1948. Converted from the second edition of the 1:63360 map to 1:50000 by the A.S.E. 1951.



NOTE: Copies of this map required for official purposes may be obtained from the Army Survey Est. AHQ, Ottawa