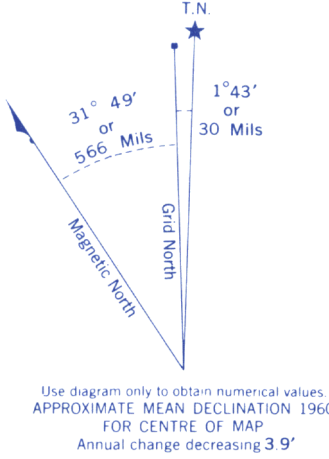
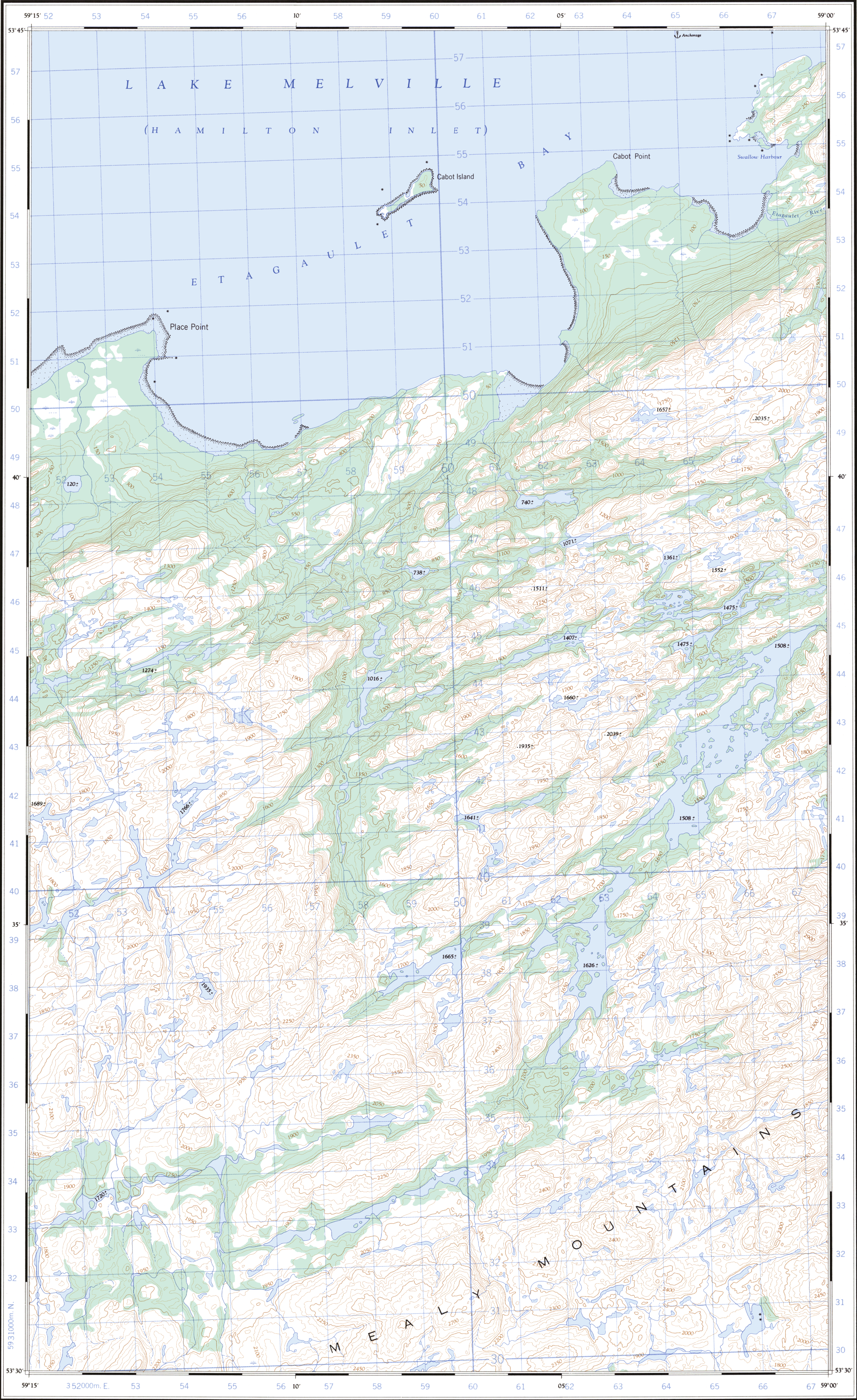


Refer to
this map as:

13 G/11 EAST
EDITION 2 ASE
SERIES A 771



GRID ZONE DESIGNATION	100,000 M. SQUARE IDENTIFICATION
21 U	U K

TO GIVE A REFERENCE TO NEAREST 100 METRES	
EXAMPLE: STREAM JUNCTION	
EASTING: Read number on grid line immediately to left of point. Estimate tenths of a square from this line eastward to point.	57 6 576
NORTHING: Read number on grid line immediately below point. Estimate tenths of a square from this line northward to point.	40 2 402
MILITARY GRID REFERENCE 576402	
Nearest similar grid reference 100,000 metres (about 63 miles)	

ONE THOUSAND METRE
UNIVERSAL TRANSVERSE MERCATOR GRID
ZONE 21

INSPECTION OF THIS MAP USING 1986 SATELLITE IMAGERY REVEALED NO CHANGES IN MAJOR HYDROGRAPHIC OR CONSTRUCTED FEATURES.

UNE VÉRIFICATION DE CETTE CARTE AU MOYEN D'IMAGES SATELLITE DE 1986 N'A MONTRÉ AUCUN CHANGEMENT EN CE QUI CONCERNE LES ÉLÉMENTS HYDROGRAPHIQUES OU LES ÉLÉMENTS RAPPORTÉS (CONSTRUCTIONS) D'IMPORTANCE.

Produced by the ARMY SURVEY ESTABLISHMENT, R.C.E. 1958-60, from air photography 1951.

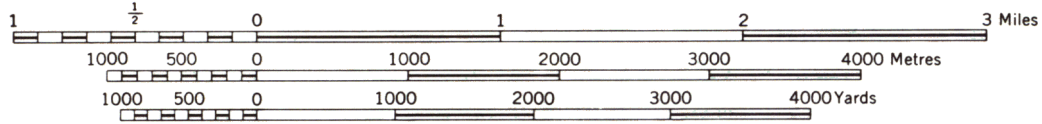
This map was compared with aerial photography flown in (1976) and found to be up-to-date in all major features.

On a comparé cette carte à la photographie prise du haut des airs en (1976); nous avons constaté que toutes ses caractéristiques principales, étaient à jour.

ESKIMO PAPS

COAST OF LABRADOR DISTRICT
NEWFOUNDLAND

SCALE 1:50,000



CONTOUR INTERVAL 50 FEET
Elevations in Feet above Mean Sea Level

Transverse Mercator Projection
North American Datum 1927

Copies may be obtained from the
Map Distribution Office,
Dept. of Mines and Technical Surveys,
Ottawa.

Roads:
hard surface, all weather more than 2 lanes Dial
hard surface, all weather 2 lanes Route No.
loose surface, all weather 2 lanes or more
dry weather less than 2 lanes
cart track; trail, or cut line
Railways:
normal gauge, multiple track Station
normal gauge, single track Stop
abandoned or under construction
underpass, overpass
Tunnel; Drawbridge
Power line; Telephone line
more than 2 lanes
2 lanes
2 lanes or more
less than 2 lanes
Station
Stop
Siding
Underpass
Overpass
Tunnel
Drawbridge
Power line
Telephone line

Boundaries:
international, with monument
provincial
county or district
township or parish
township or parish, unsurveyed
city or town
park, reserve, etc.
Horizontal control point, with elevation 582
Bench mark, with elevation BM
Spot elevation; precise, approximate 4582 757
Historical site; Cemetery
Mine or open cut; Quarry
Sand or gravel pit

House; Building
School
Church; Church with spire
Post Office
Radio Station
Tower; Chimney
Well; Tank
Cutting
Embankment
Cliff
Contours:
elevation
depression
approximate
Lighthouse
Wharf or pier; Breakwater
Levee or dyke
Rocky reef
Swamp or marsh
Inundated land, seasonal
Intermittent lake, stream
Indefinite shoreline, stream
Rapids, large, small; Bridge
Ditch or flume
Rock
Wooded area; unclassified, scrub
Vineyard; Orchard

House; Building
School
Church; Church with spire
Post Office
Radio Station
Tower; Chimney
Well; Tank
Cutting
Embankment
Cliff
Contours:
elevation
depression
approximate
Lighthouse
Wharf or pier; Breakwater
Levee or dyke
Rocky reef
Swamp or marsh
Inundated land, seasonal
Intermittent lake, stream
Indefinite shoreline, stream
Rapids, large, small; Bridge
Ditch or flume
Rock
Wooded area; unclassified, scrub
Vineyard; Orchard

Foreshore flats
Lighthouse
Wharf or pier; Breakwater
Levee or dyke
Rocky reef
Swamp or marsh
Inundated land, seasonal
Intermittent lake, stream
Indefinite shoreline, stream
Rapids, large, small; Bridge
Ditch or flume
Rock
Wooded area; unclassified, scrub
Vineyard; Orchard

INDEX TO ADJOINING SHEETS

59°30'	59°30'	59°30'
136/13 MULLIGAN BAY	136/14 ETAGAULET POINT	136/15 ENGLISH RIVER
53°45'	136/12 EPINETTE POINT	136/11 ENGLISH LAKE
53°15'	136/5 KENEMICH RIVER	136/6 ESKIMO PAPS
		136/7

ESKIMO PAPS
13 G/11 EAST
EDITION 2