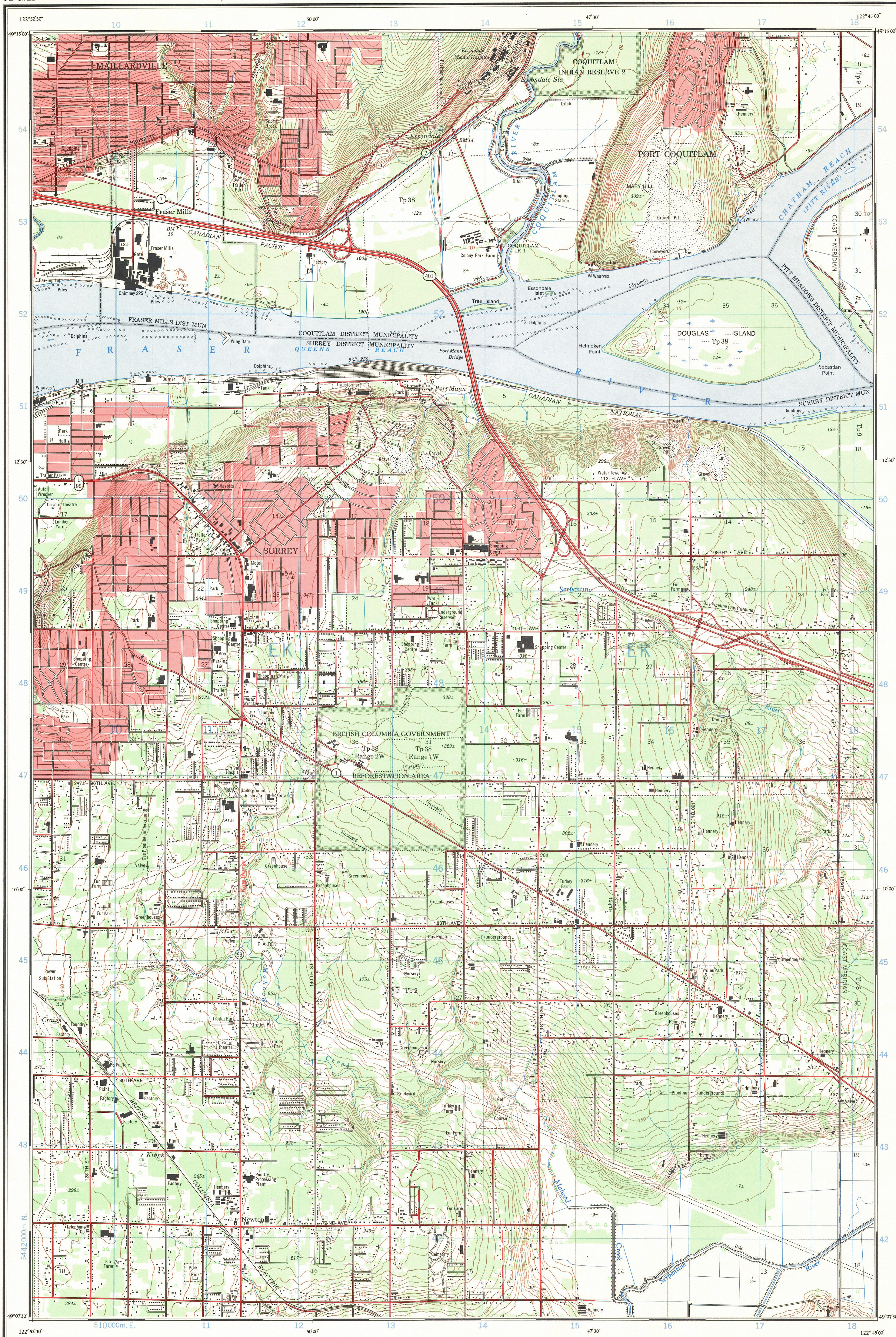
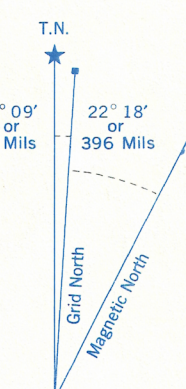


Refer to  
this map as: 92 G/2 f  
EDITION 3 MCE  
SERIES A 821



CONVERSION SCALE FOR ELEVATIONS

30 20 10 0  
100 150 200 250 300 350 400 450 500 550 600 650 700 750 800 850 900 950 1000  
Feet Metres

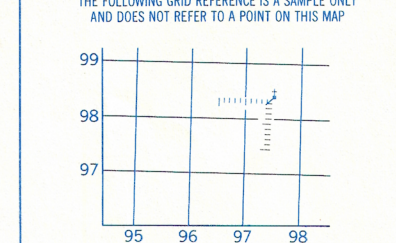


Use diagram only to obtain numerical values.  
APPROXIMATE MEAN DECLINATION 1969  
FOR CENTRE OF MAP  
Annual change decreasing 2.8'

ONE THOUSAND METRE  
UNIVERSAL TRANSVERSE MERCATOR GRID  
ZONE 10

GRID ZONE DESIGNATION	100,000 M. SQUARE IDENTIFICATION
10 U	E K

EXAMPLE OF METHOD USED  
TO GIVE A REFERENCE TO NEAREST 100 METRES



REFERENCE POINT	CHURCH (as above)
EASTING: Road number on grid line immediately to left of point	97
Estimate tenths of a square from this line eastward to point	97.5
NORTHING: Road number on grid line immediately below point	98
Estimate tenths of a square from this line northward to point	98.4
EXAMPLE MILITARY GRID REFERENCE 975984	
Nearest similar grid reference 100,000 metres (about 63 miles)	

Second edition map updated by the SURVEYS AND MAPPING BRANCH,  
DEPARTMENT OF ENERGY, MINES AND RESOURCES. Information  
depicted current as of 1968. Printed 1970.

Copies may be obtained from the Map Distribution Office,  
Department of Energy, Mines and Resources, Ottawa.

## PORT MANN

NEW WESTMINSTER DISTRICT  
BRITISH COLUMBIA

Scale 1:25,000 Échelle

Miles 1 0 1  
Metres 1000 500 0 1000 Metres  
Yards 1000 500 0 1000 Yards

Roads:	Routes:
hard surface, all weather	pavée, toute saison
hard surface, all weather	pavée, toute saison
loose or stabilized surface, all weather	gravier aggloméré, toute saison
loose surface, dry weather	de gravier, période sèche
car track	de terre
trail or portage	sentier ou portage
Railway, normal gauge, single track	Chemin de fer, voie unique (écartement normal)
Horizontal control point, with elevation	Point géodésique, avec cote
Bench mark, with elevation	Repère de nivellement, avec cote
Spot elevation, precise	Point coté, précis
Mine or open cut	Mine ou fosse à ciel ouvert

CONTOUR INTERVAL 10 FEET  
AUXILIARY CONTOUR INTERVAL 5 FEET  
Elevations in Feet above Mean Sea Level  
North American Datum 1927  
Transverse Mercator Projection

ÉLOUSTRANCE DES COURBES 30 PIEDS  
ÉLOUSTRANCE DES COURBES INTERMÉDIAIRES 5 PIEDS  
Éloéutions en pieds au-dessus du niveau moyen de la mer  
Système de référence géodésique nord-américain 1927  
Projection Transverse de Mercator

Building	Bâtiment	Church	Église
School	École	Post Office	Bureau de poste
Cemetery	Cimetière	Navigation Light	Feu de navigation
Rock, bare or awash	Roche, nue ou à fleur d'eau		
Power transmission line	Ligne de transport d'énergie		
River with bridge	Rivière avec pont		
Rapids, Falls, tangle small	Rapides, Chutes, grands, petits		
Lake intermittent, indefinite	Lac intermittent, rive imprécise		
Marsh or Swamp	Marais ou marécage		
Depression contours	Courbes de cuvette		
Trees	Arbres		
Woods	Bois		
Vineyard, Orchard	Vignoble, Verger		

TABLEAU D'ASSEMBLAGE DU SYSTÈME NATIONAL  
DE RÉFÉRENCE CARTOGRAPHIQUE

49°22'30"	122°00'00"	122°30'30"	49°22'30"
92 G/74	92 G/7c	92 G/7b	
92 G/7a	92 G/2f	92 G/7d	
92 G/2a	92 G/2c	92 G/2b	
49°00'00"	122°00'00"	122°30'30"	49°00'00"

PORT MANN  
92 G/2f  
EDITION 3