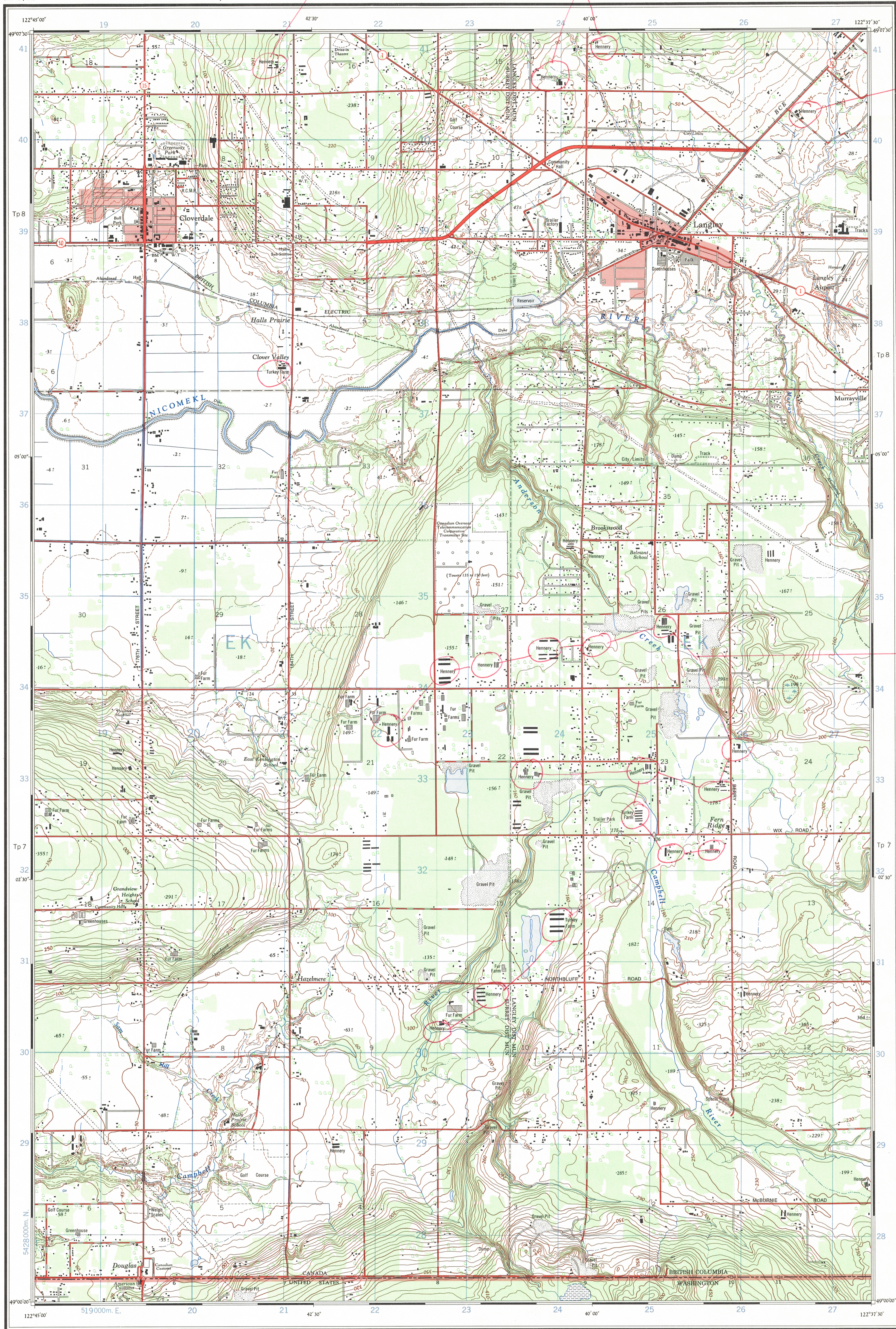
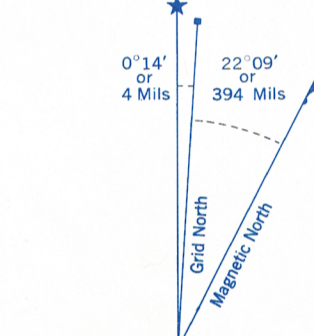


Refer to
this map as:
92 G/2b
EDITION 2 MCE
SERIES A 821



Change to "Poultry Farm" in all instances



Use diagram only to obtain numerical values.
APPROXIMATE MEAN DECLINATION 1969
FOR CENTRE OF MAP
Annual change decreasing 2.8"

ONE THOUSAND METRE
UNIVERSAL TRANSVERSE MERCATOR GRID
ZONE 10

GRID ZONE DESIGNATION	100,000 M. SQUARE IDENTIFICATION
10U	EK

EXAMPLE OF METHOD USED
TO GIVE A REFERENCE TO NEAREST 100 METRES
THE FOLLOWING GRID REFERENCE IS A SIMPLE ONE
AND DOES NOT REFER TO A POINT ON THIS MAP

REFERENCE POINT	CHURCH (as above)
EASTING: Read number on grid line immediately to left of point. Estimate tenths of a square from this line northwest to point.	97 5 975
NORTHING: Read number on grid line immediately below point. Estimate tenths of a square from this line northeast to point.	98 4 984
EXAMPLE MILITARY GRID REFERENCE 975984	
Nearest similar grid reference 100,000 metres (about 63 miles)	

First edition map updated by the SURVEYS AND MAPPING BRANCH,
DEPARTMENT OF ENERGY, MINES AND RESOURCES. Information
depicted current as of 1968. Printed 1972.

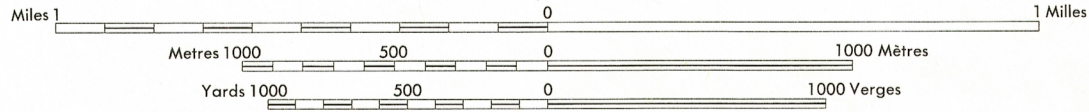
Copies may be obtained from the Map Distribution Office,
Department of Energy, Mines and Resources, Ottawa.

© Canada Copyrights reserved 1972.

LANGLEY

NEW WESTMINSTER DISTRICT
BRITISH COLUMBIA - WASHINGTON
EAST OF COAST MERIDIAN - EST DU MERIDIEN CÔTIER

Scale 1:25,000 Échelle



CONTOUR INTERVAL 10 FEET
AUXILIARY CONTOURS AT 5 FEET
Elevations in feet above Mean Sea Level
North American Datum 1927
Transverse Mercator Projection

EQUIDISTANCE OF THE CURVES 10 FEET
COURBES INTERMÉDIAIRES À 5 PIEDS
Élévation en pieds au-dessus du niveau moyen de la mer
Système de référence géodésique nord-américain 1927
Projection transverse de Mercator

Première édition mise à jour par la DIRECTION DES LEVÉS ET DE LA
CARTOGRAPHIE, MINISTÈRE DE L'ÉNERGIE, DES MINES ET
DES RESSOURCES. Renseignements à jour en 1968. Imprimée en 1972.

Ces cartes sont en vente au Bureau de distribution des cartes,
ministère de l'Énergie, des Mines et des Ressources, Ottawa.

© Canada 1972, tous droits réservés.

Roads:	Routes:
hard surface, all weather.....	pavée, toute saison.....
hard surface, all weather.....	pavée, toute saison.....
loose or stabilized surface, all weather.....	de gravier aggloméré, toute saison.....
loose surface, dry weather.....	de gravier, période sèche.....
cart track.....	de terre.....
trail or portage.....	sentier ou portage.....
Railway, normal gauge, single track.....	Chemin de fer, voie unique (écartement normal).....
Horizontal control point, with elevation.....	Point géodésique, avec cote.....
Bench mark, with elevation.....	Repère de nivellement, avec cote.....
Spot elevation, precise.....	Point coté, précis.....
Mine or open cut.....	Mine ou fosse à ciel ouvert.....

Building.....	Bâtiment.....
School.....	École.....
Cemetery.....	Cimetière.....
Rock, bare or awash.....	Roche, nue ou à fleur d'eau.....
Power transmission line.....	Ligne de transport d'énergie.....
River with bridge.....	Rivière avec pont.....
Rapids, Falls, large, small.....	Rapides, Chutes, grands, petits.....
Lake intermittent, indefinite.....	Lac intermittent, rive imprécise.....
Marsh or Swamp.....	Marais ou marécage.....
Depression contours.....	Courbes de cuvette.....
Trees.....	Arbres.....
Woods.....	Bois.....
Vineyard, Orchard.....	Vignoble, Verger.....

TABLEAU D'ASSEMBLAGE DU SYSTÈME NATIONAL DE RÉFÉRENCE CARTOGRAPHIQUE			
122°52'30"	122°30'00"	122°07'30"	49°15'00"
92 G/2f	92 G/2g	92 G/2h	
92 G/2c	92 G/2d	92 G/2e	
USA	USA	USA	
48°52'30"	48°30'00"	48°07'30"	49°15'00"
INDEX TO ADJOINING MAPS OF THE NATIONAL TOPOGRAPHIC SYSTEM			

LANGLEY

92 G/2b

EDITION 2

AMS 1:62.5 SW

SERIES V 891